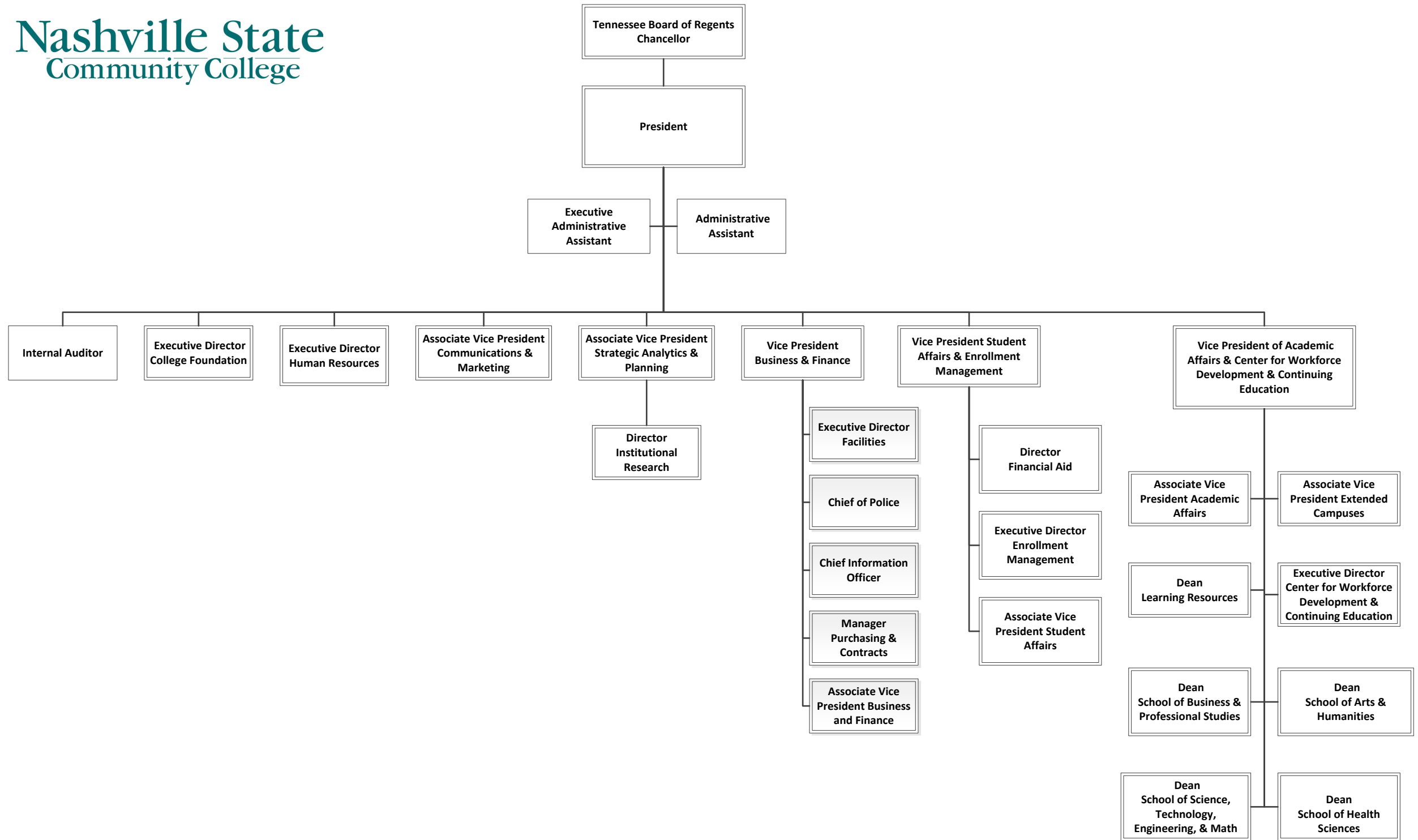


**NASHVILLE STATE COMMUNITY COLLEGE  
ORGANIZATIONAL CHART**



# President

## **President's Office**

Office of the President

Office of the Internal Auditor

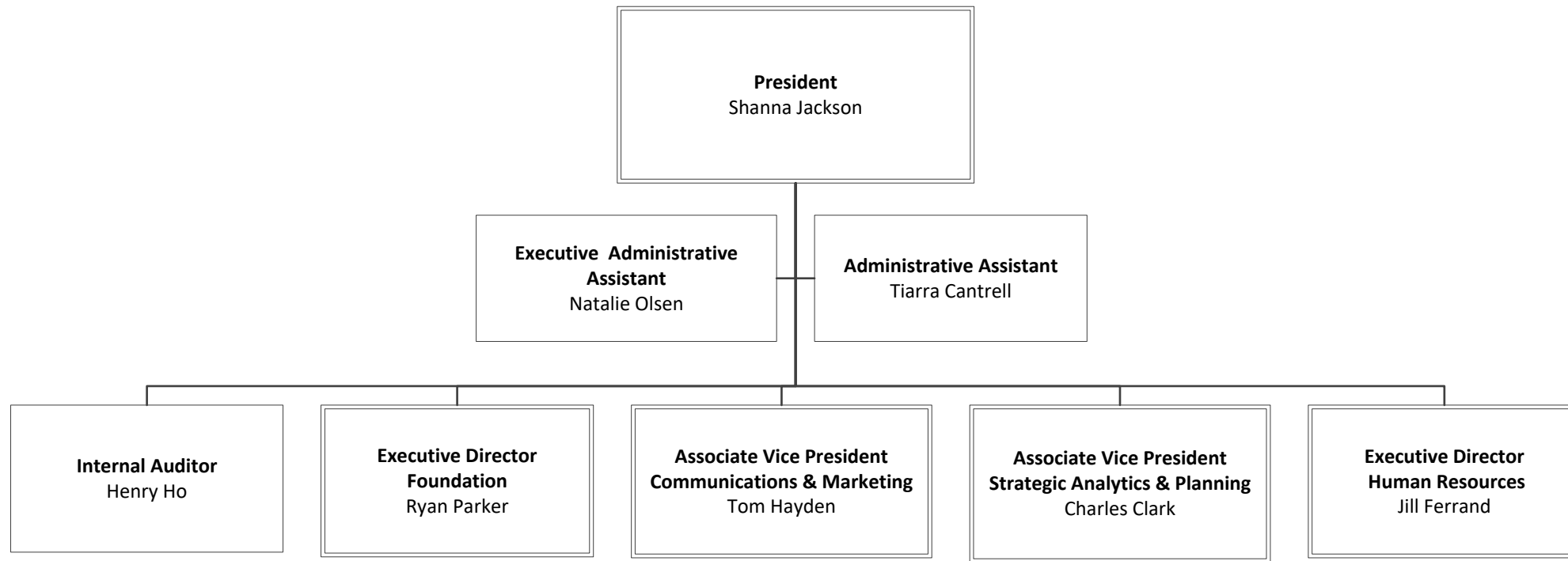
College Foundation

Office of Communication & Marketing

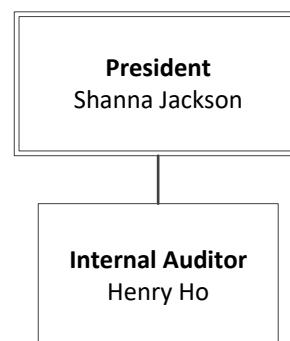
Office of Strategic Analytics & Planning

Office of Human Resources

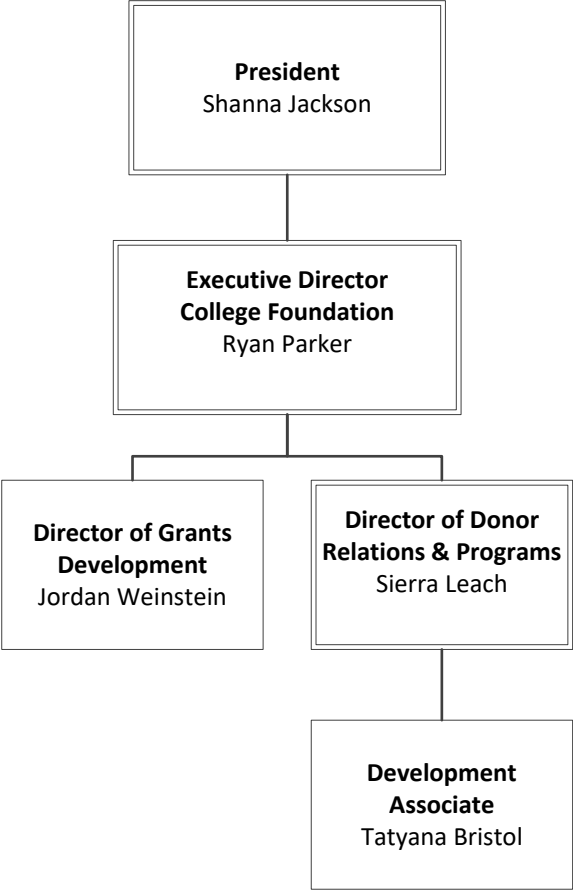
# Office of the President



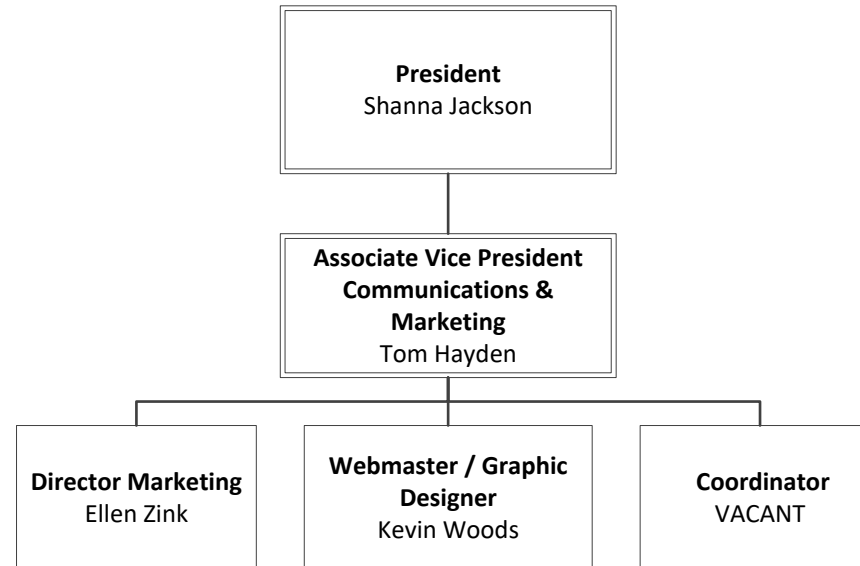
# Office of the Internal Auditor



# College Foundation



# Office of Communication and Marketing

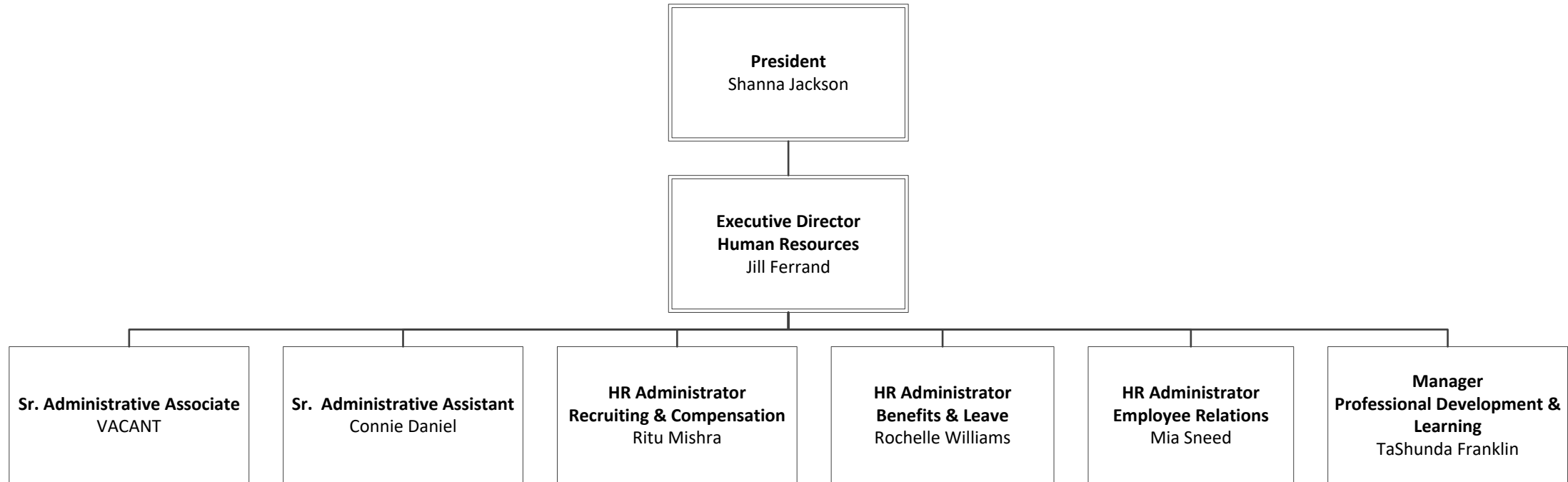


# Office of Strategic Analytics and Planning





# Office of Human Resources



# Vice President of Business & Finance

## Vice President for Business & Finance

Office of the Vice President of Business & Finance

Office of Facilities Management

Office of Police and Security

Office of Technology Services

Office of Purchasing and Contracts

Office of the Associate Vice President Business & Finance

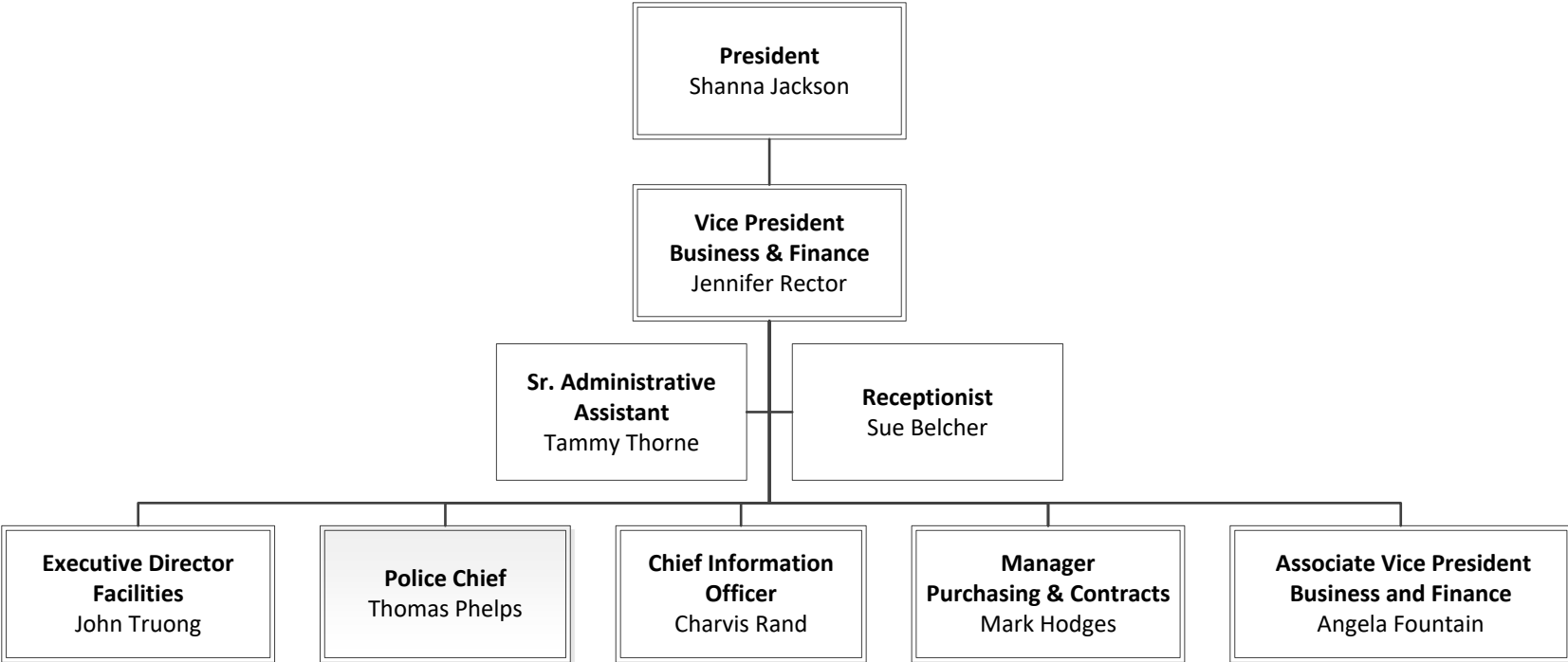
Office of Accounting & External Reporting

Office of Payroll

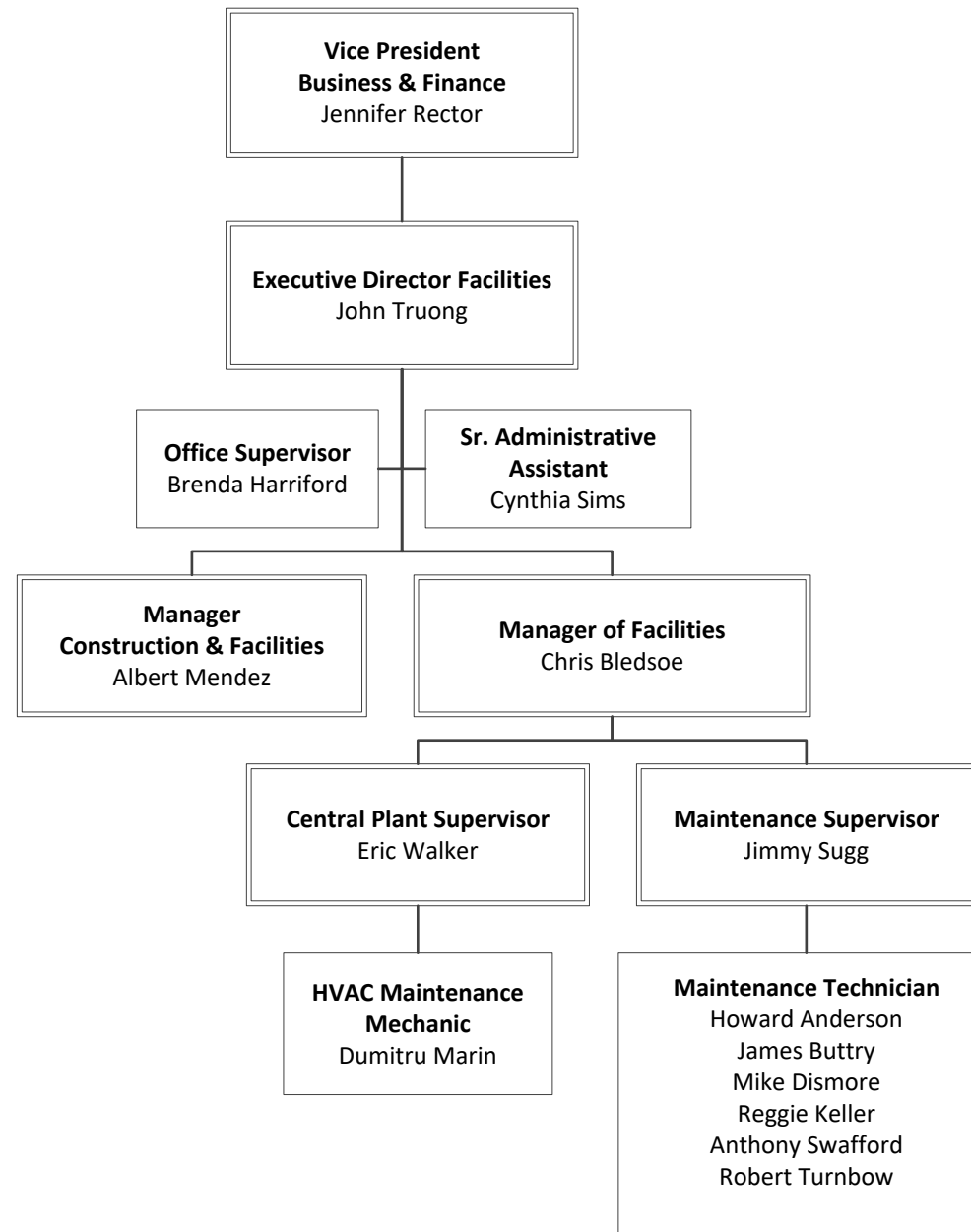
Office of Budget and Travel

Office of Student Billing and Account Services

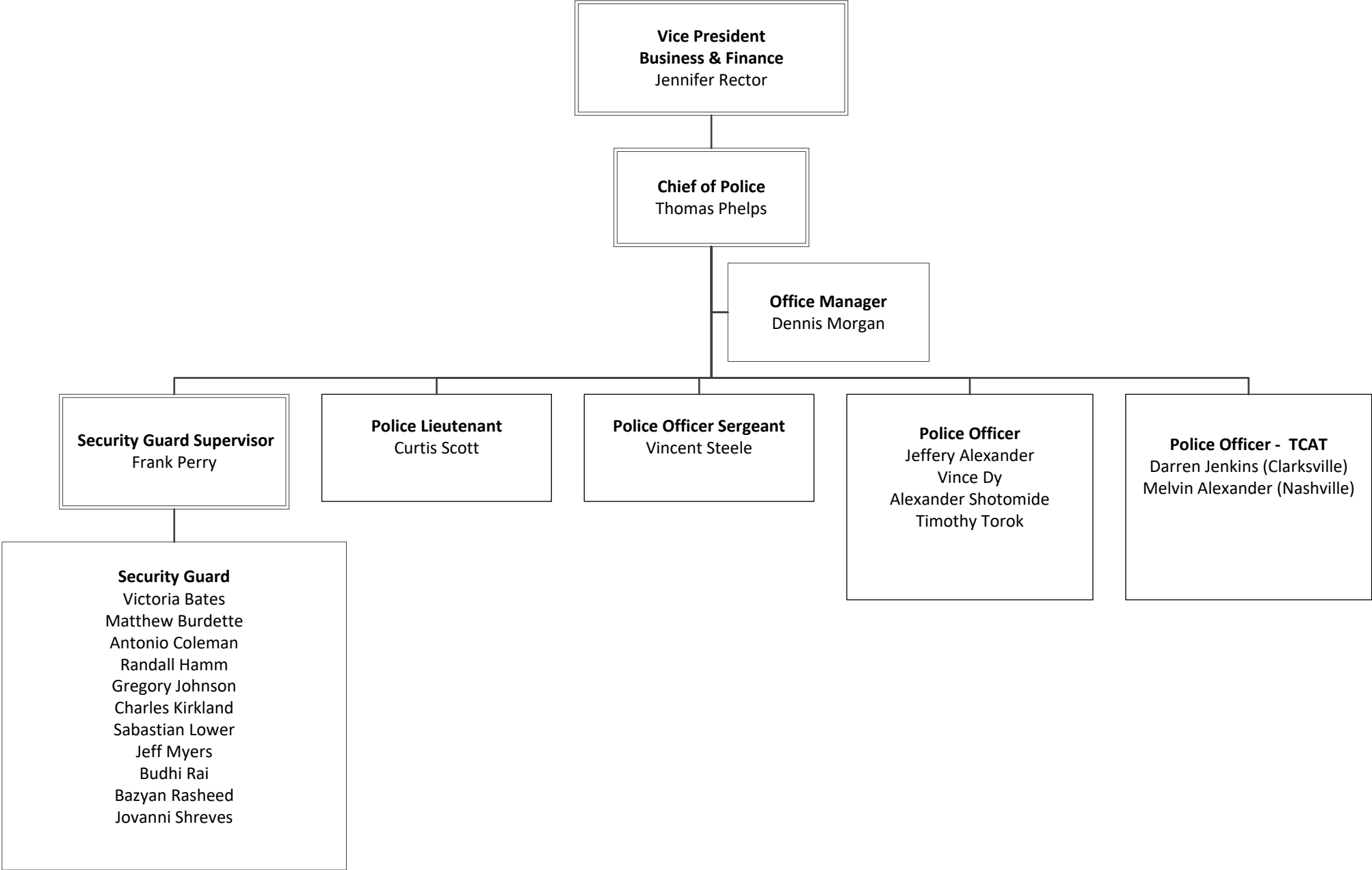
# Office of the Vice President for Business & Finance



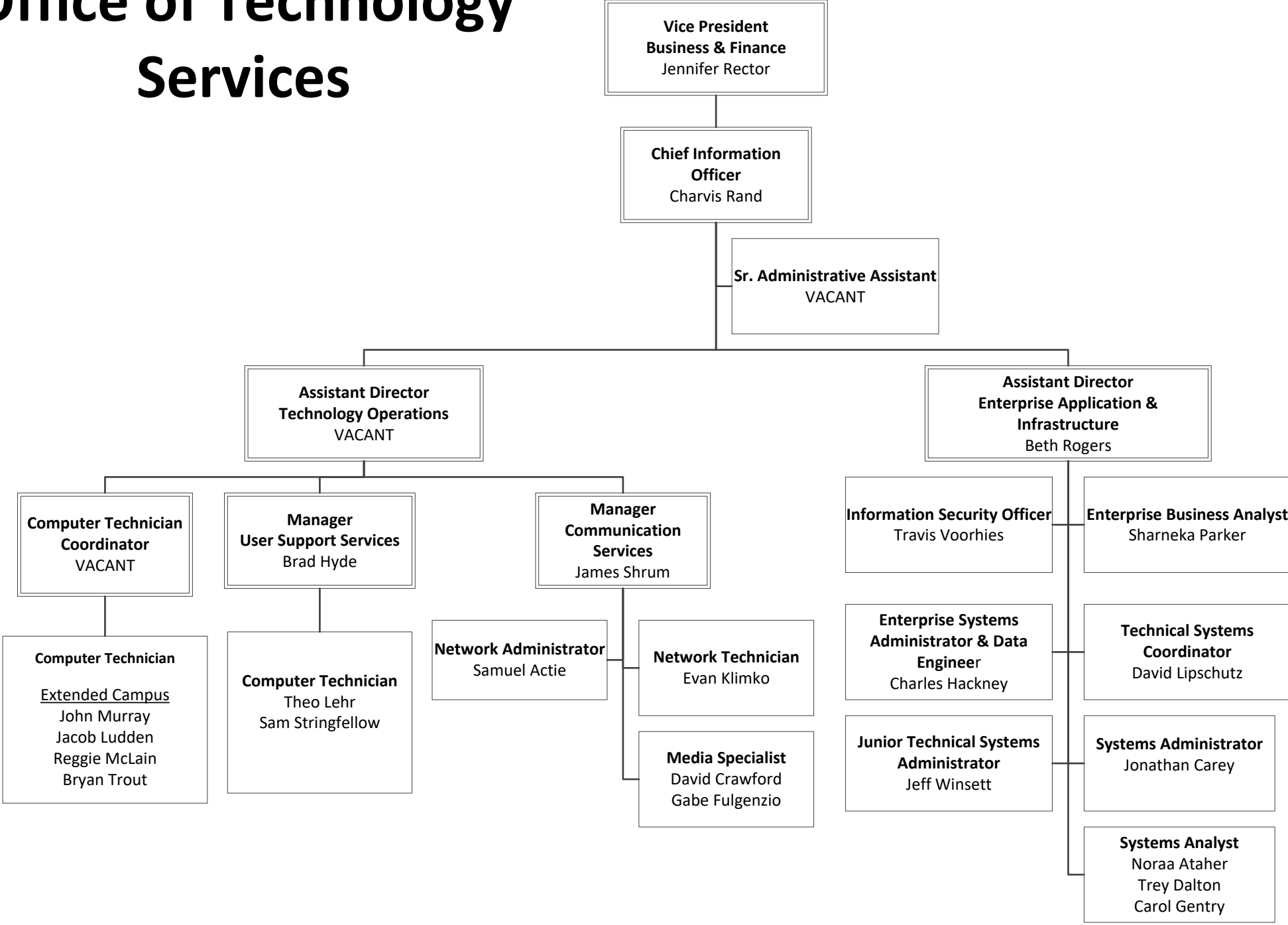
# Office of Facilities Management



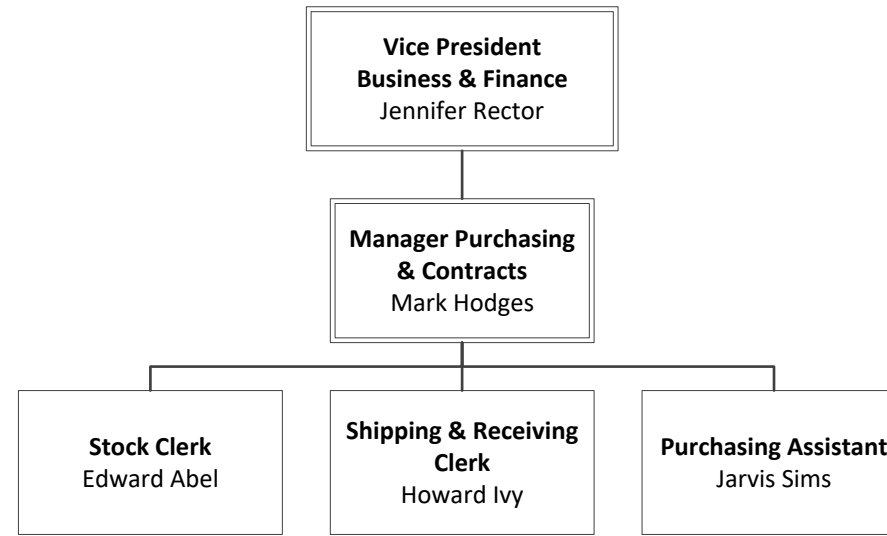
# Office of Police and Security



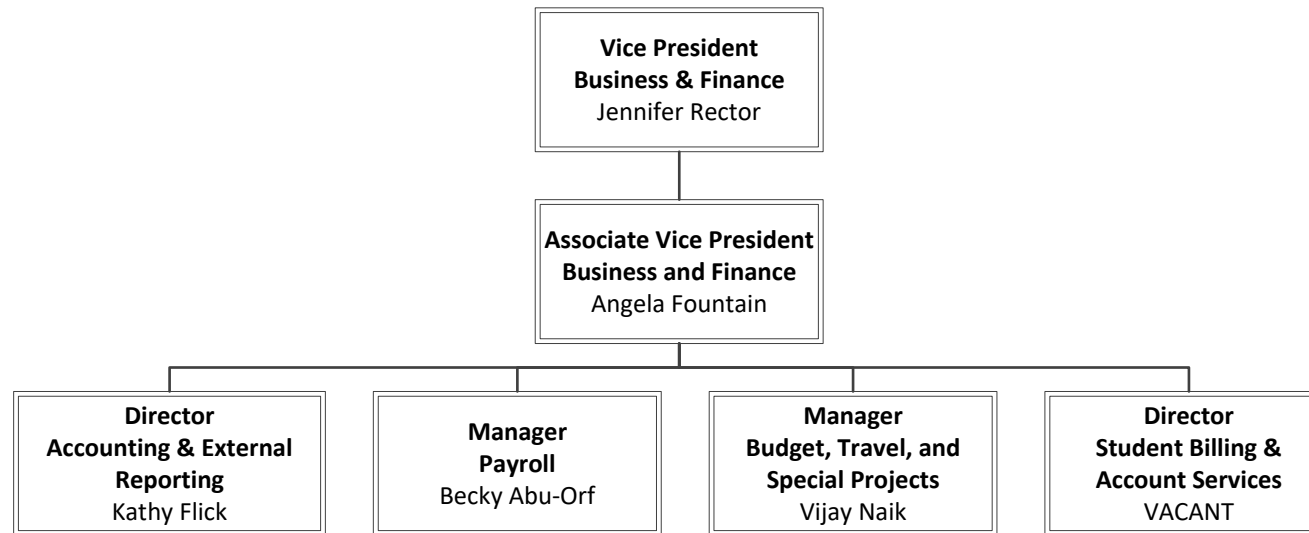
# Office of Technology Services



# Office of Purchasing & Contracts

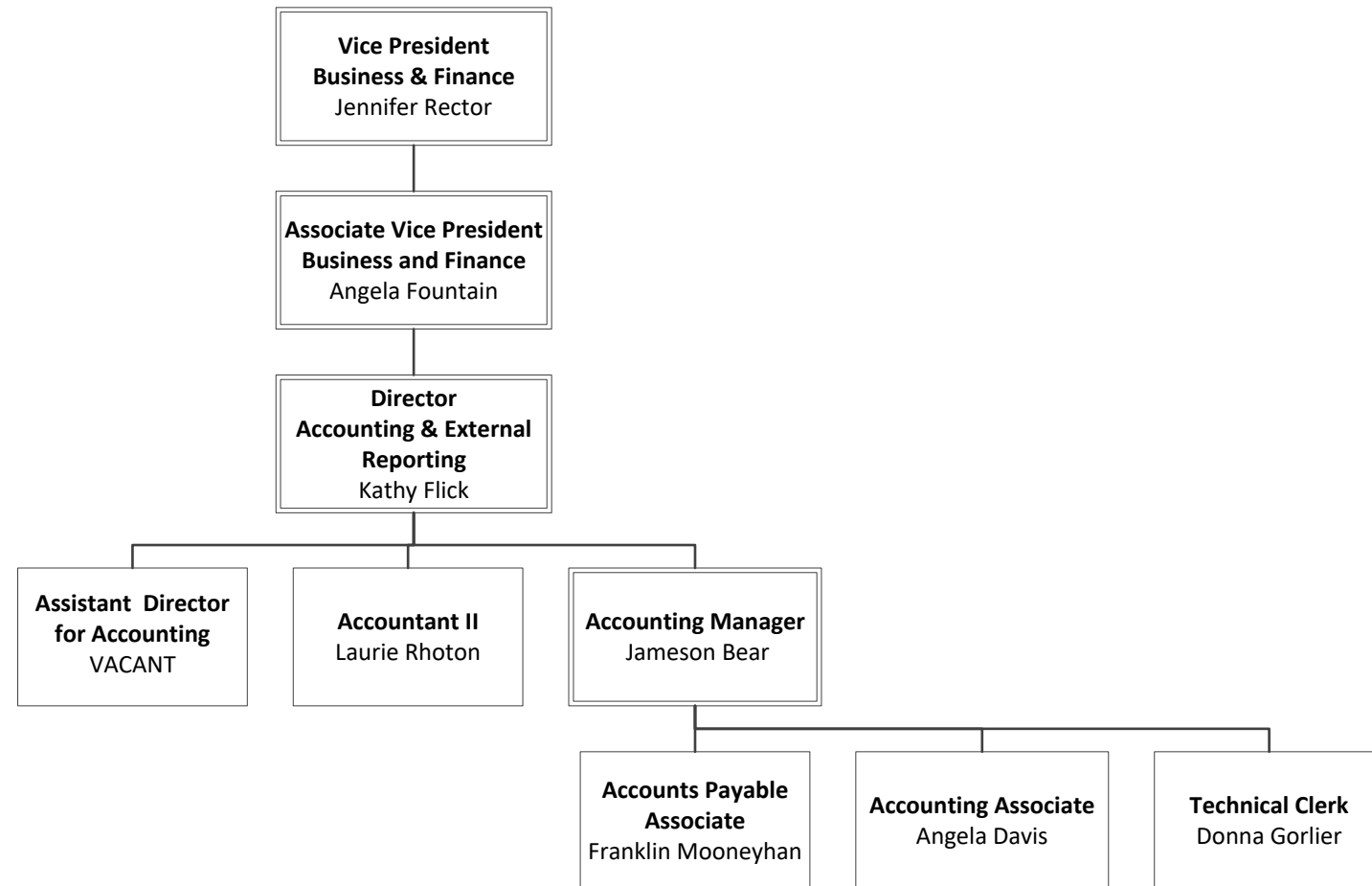


# Office of the Associate Vice President for Finance & Accounting

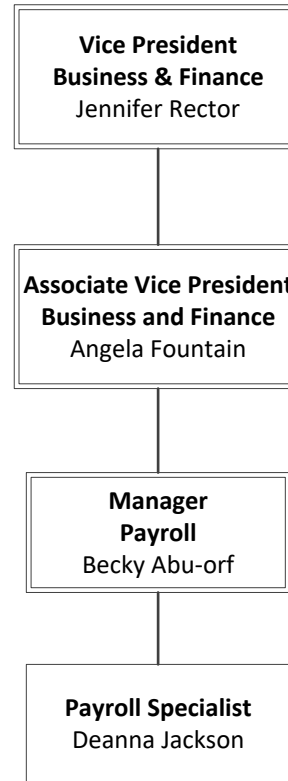




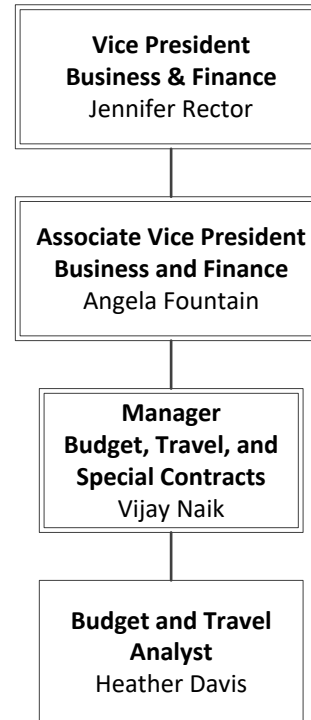
# Office of Accounting & External Reporting



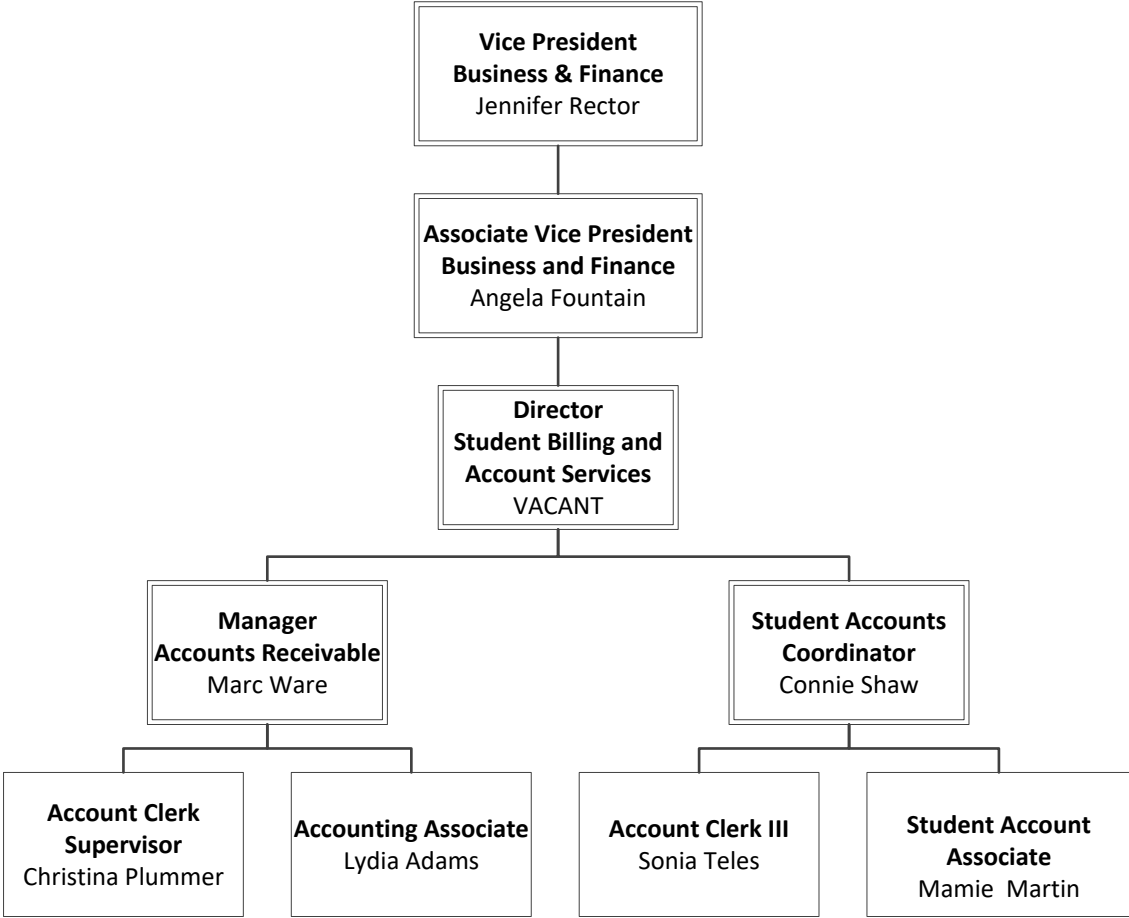
# Office of Payroll



# Office of Budget and Travel



# Office of Student Billing and Account Services



# Vice President of Student Affairs & Enrollment Management

## Vice President for Student Affairs and Enrollment Management

Office of the Vice President of Student Affairs and Enrollment Management

Office of Financial Aid

Office of Enrollment Services

- Office of Admission & Records
- Office of the Welcome Center and Career Services
- Office of the Testing Center

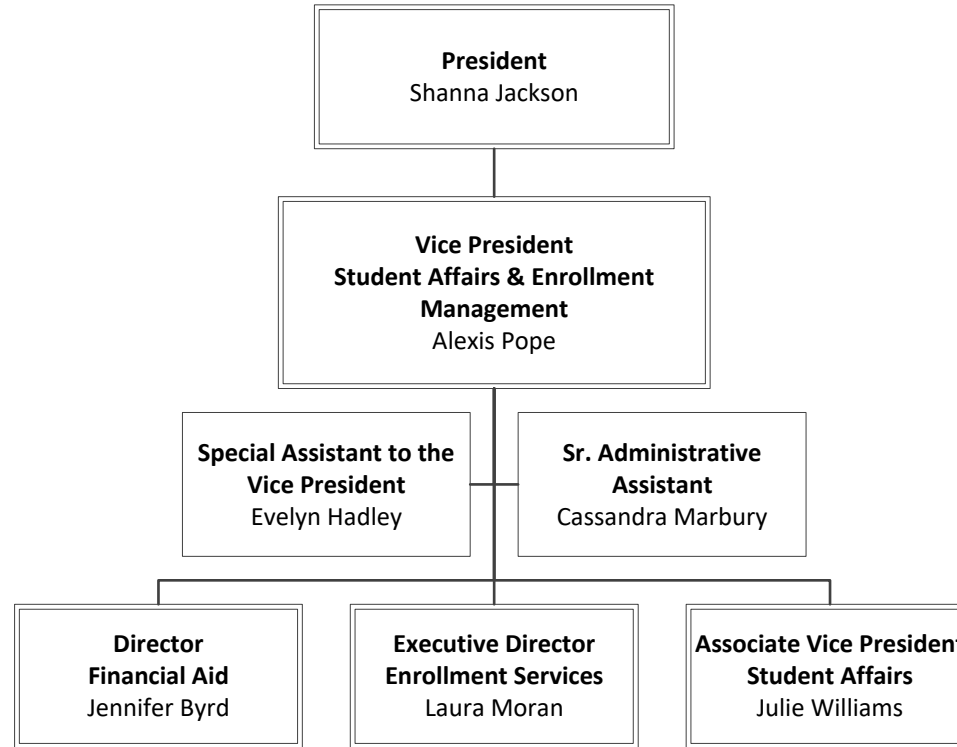
Office of the Associate Vice President for Student Affairs

Office of the Student Success Center

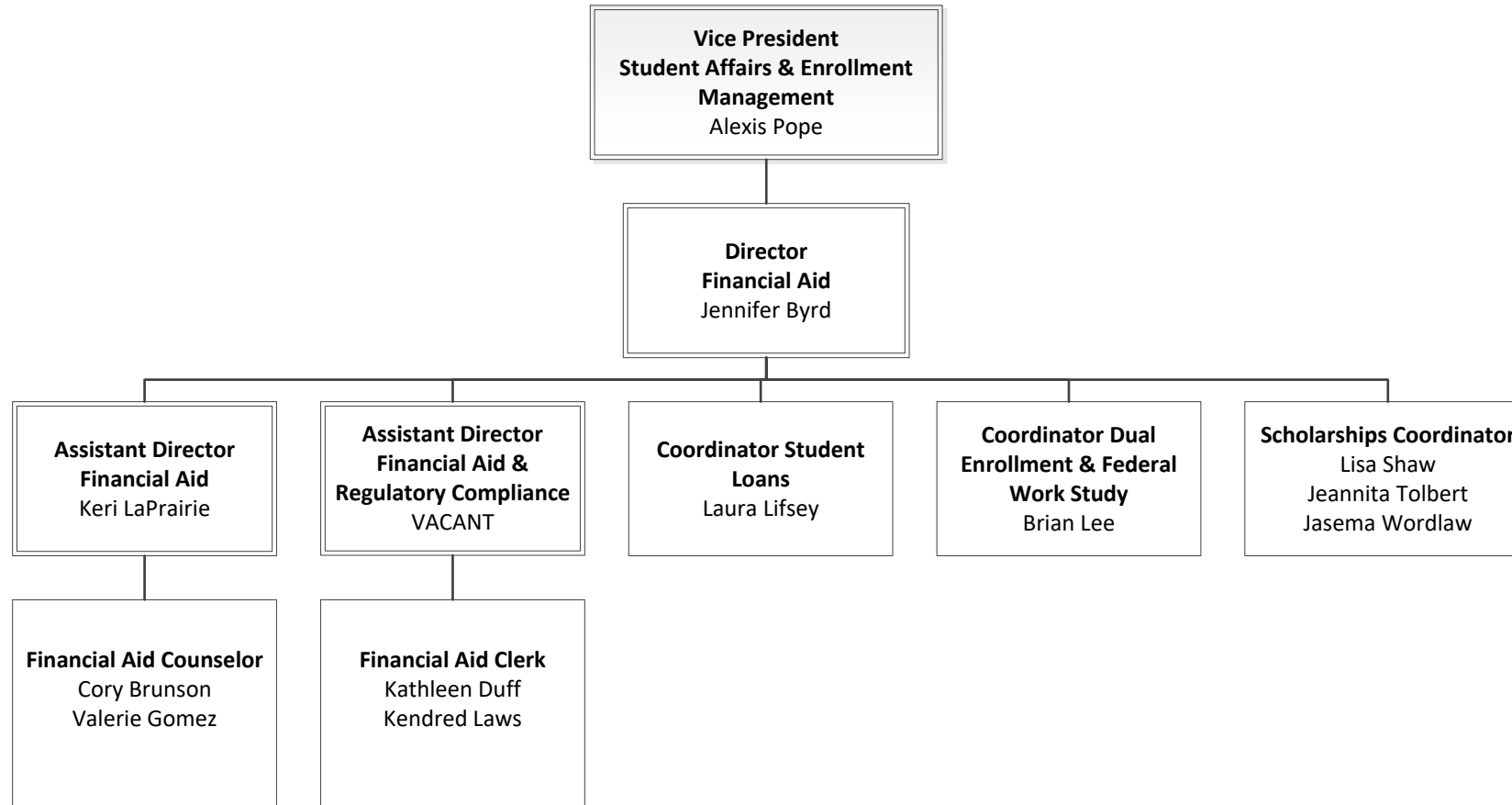
Office of the Access Center

Office of Student Life

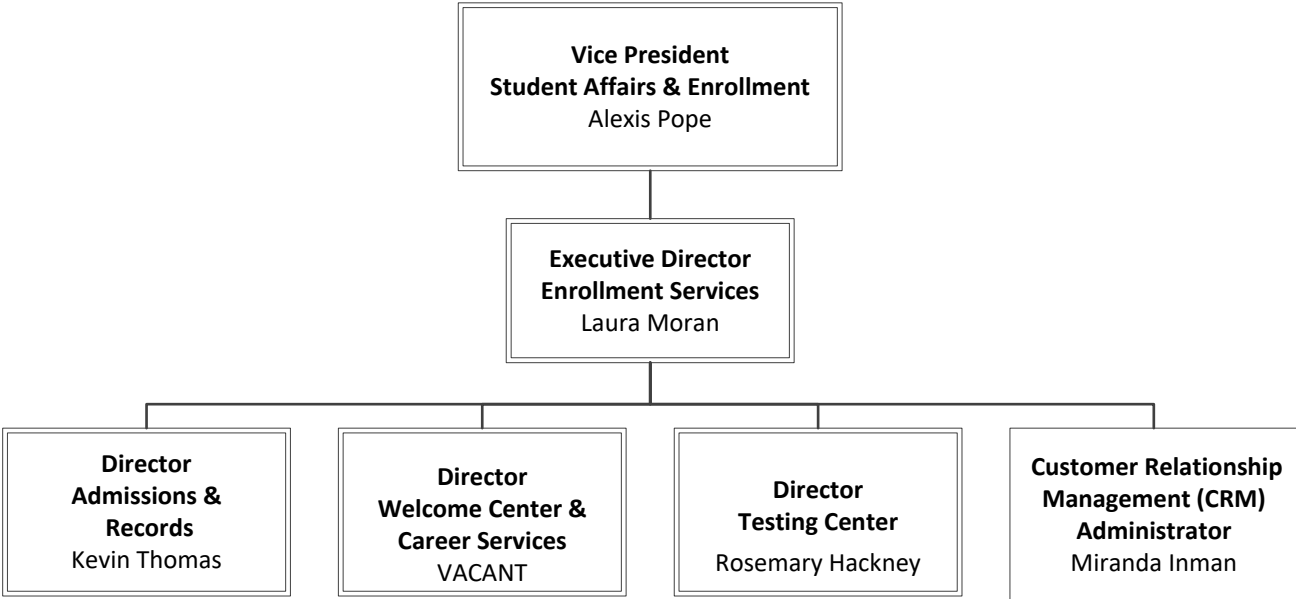
# Office of the Vice President for Student Affairs & Enrollment Management



# Office of Financial Aid



# Office of Enrollment Services

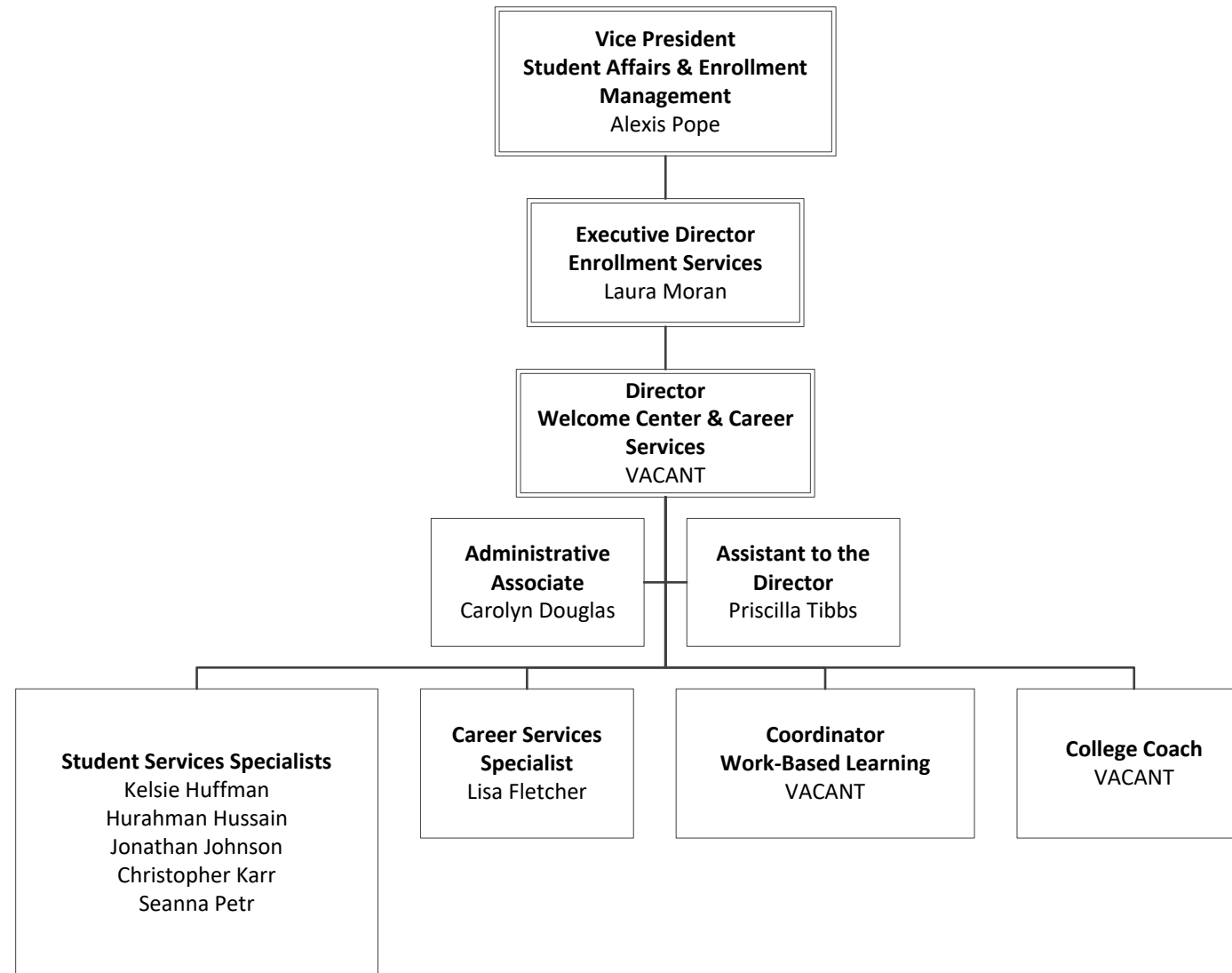




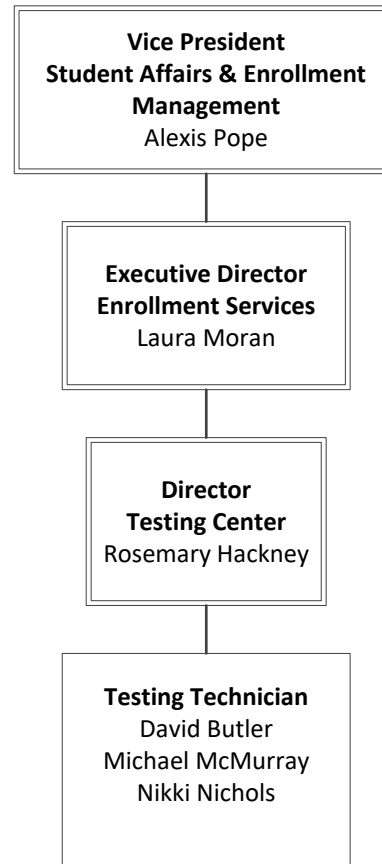
# Office of Admissions & Records



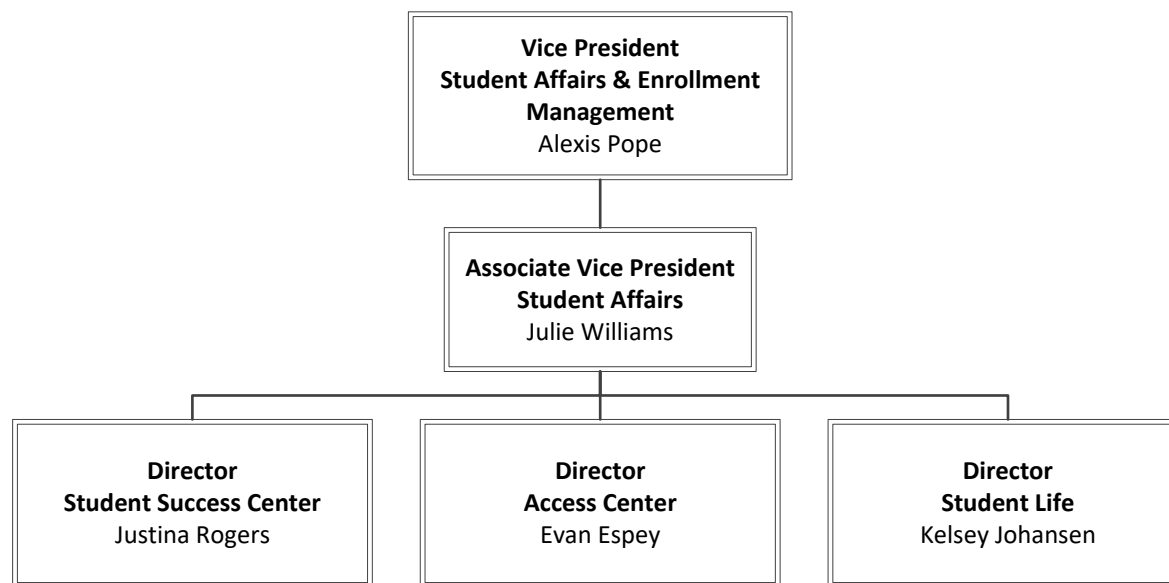
# Office of the Welcome Center & Career Services



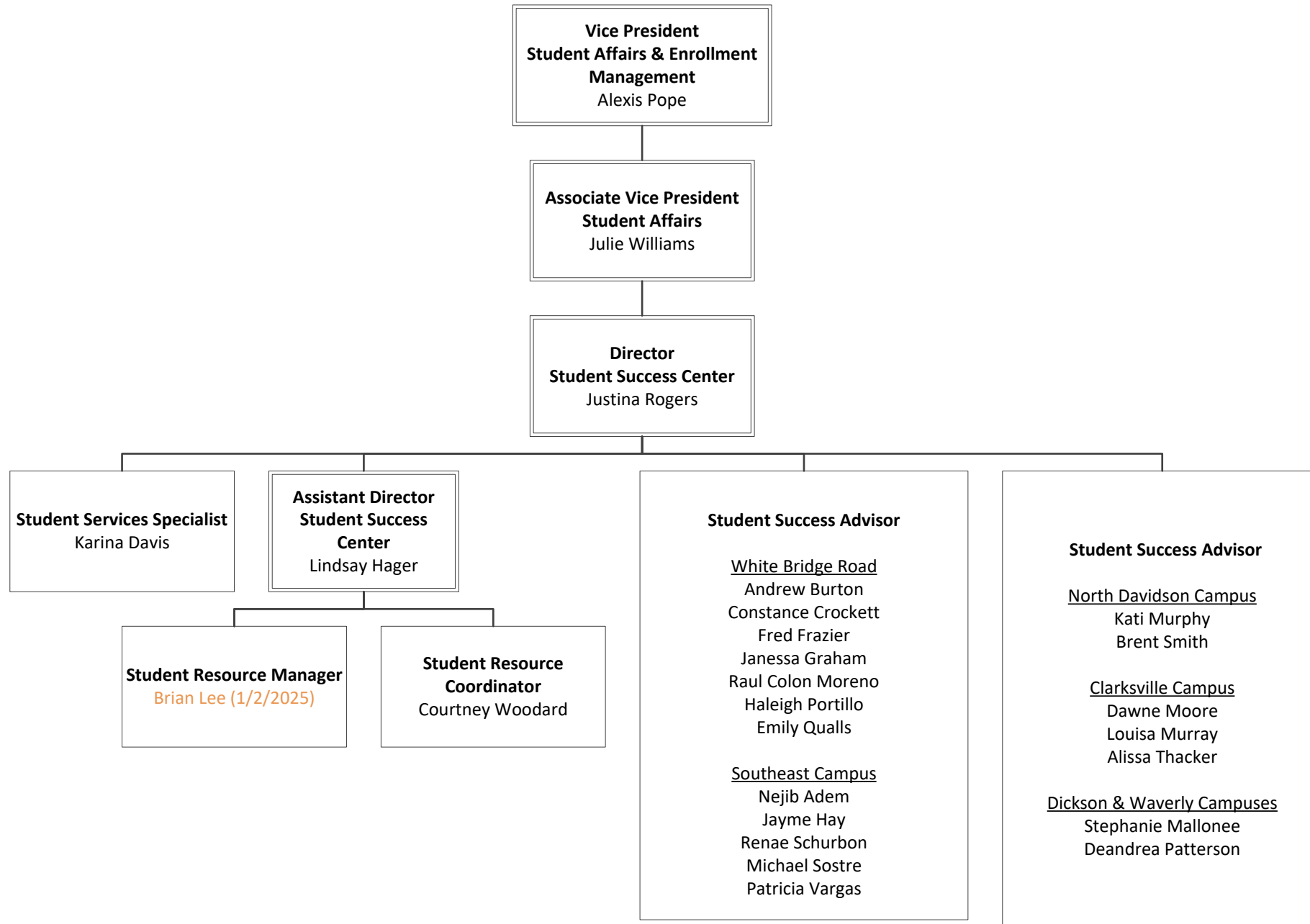
# Office of the Testing Center



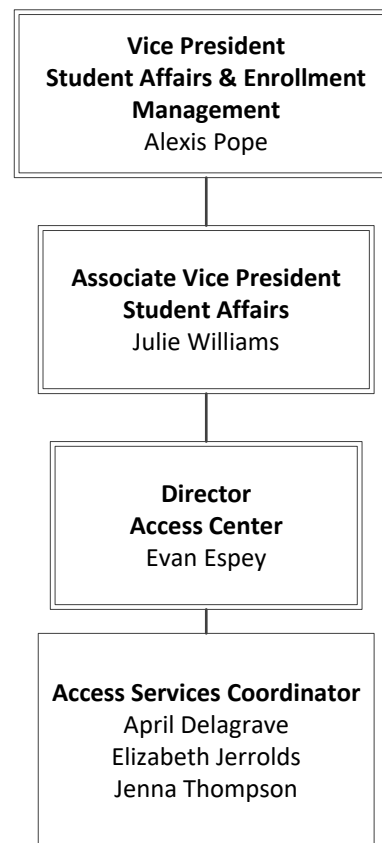
# Office of the Associate Vice President for Student Affairs



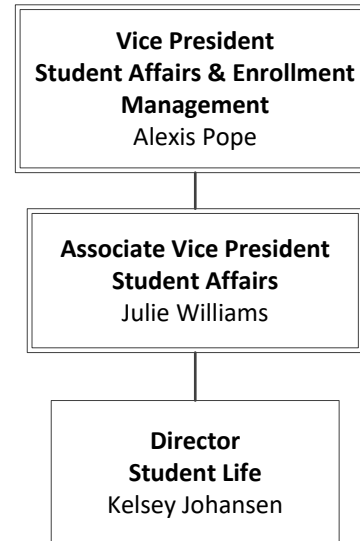
# Office of the Student Success Center



# Office of the Access Center



# Office of Student Life



# Vice President of Academic Affairs

## Vice President for Academic Affairs and Workforce Development

Office of the Vice President of Academic Affairs

Office of the Center for Workforce Development and Continuing Education

Office of Learning Resources

School of Business and Professional Studies

School of Arts and Humanities

School of Health Sciences

School of Science, Technology, Engineering and Mathematics

Office of the Associate Vice President Academic Affairs

Office of Online Learning

Office of the Associate Vice President Extended Campuses

Office of High School Initiatives & Dual Enrollment

Clarksville Campus

Dickson Campus

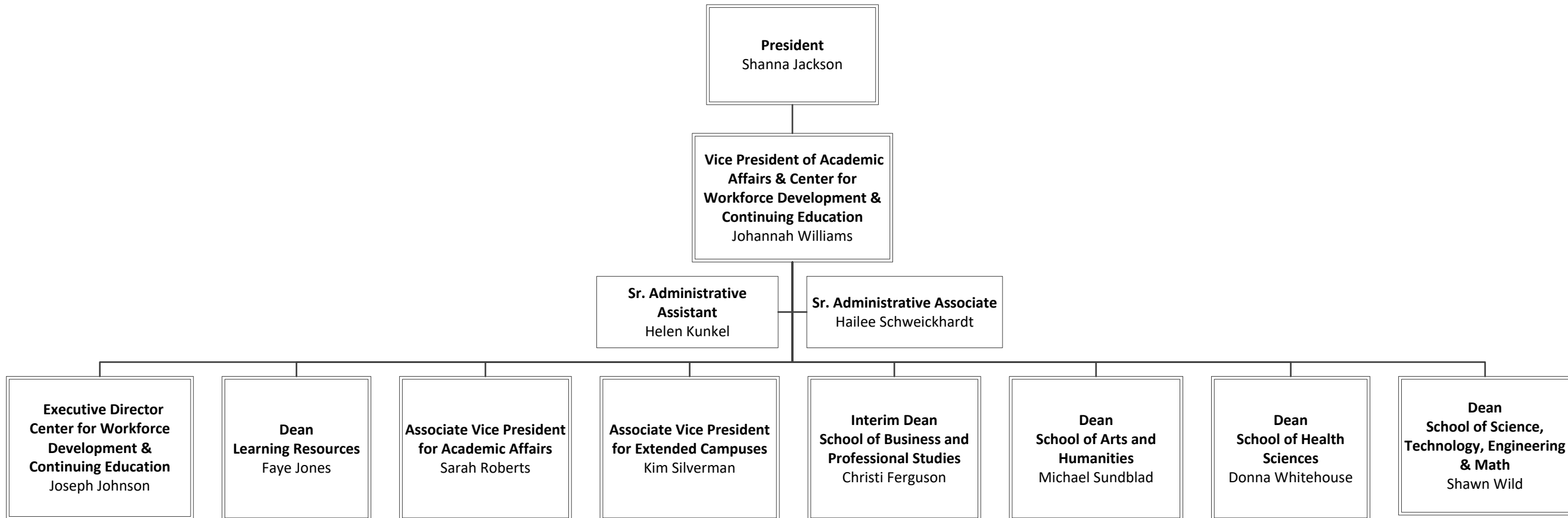
Humphreys County Campus

North Davidson Campus

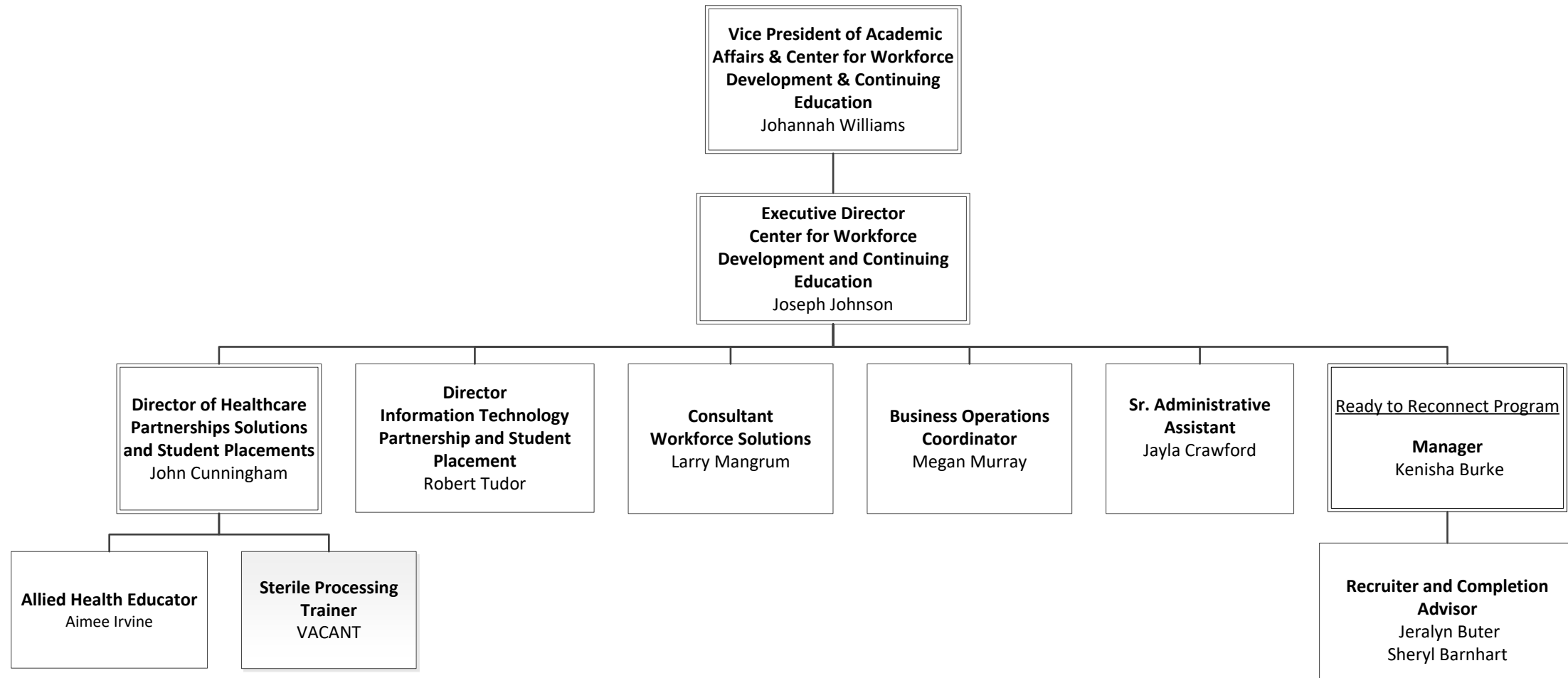
Southeast Campus



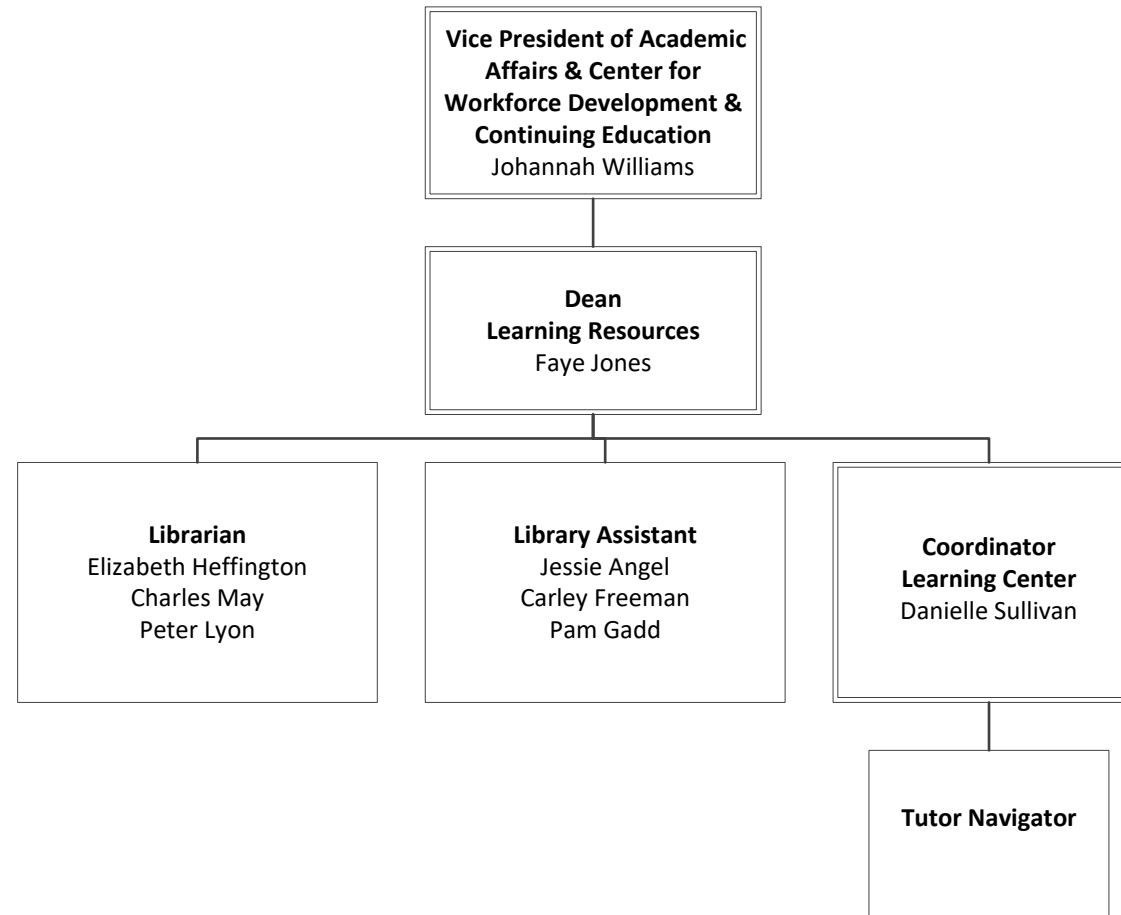
# Office of the Vice President for Academic Affairs



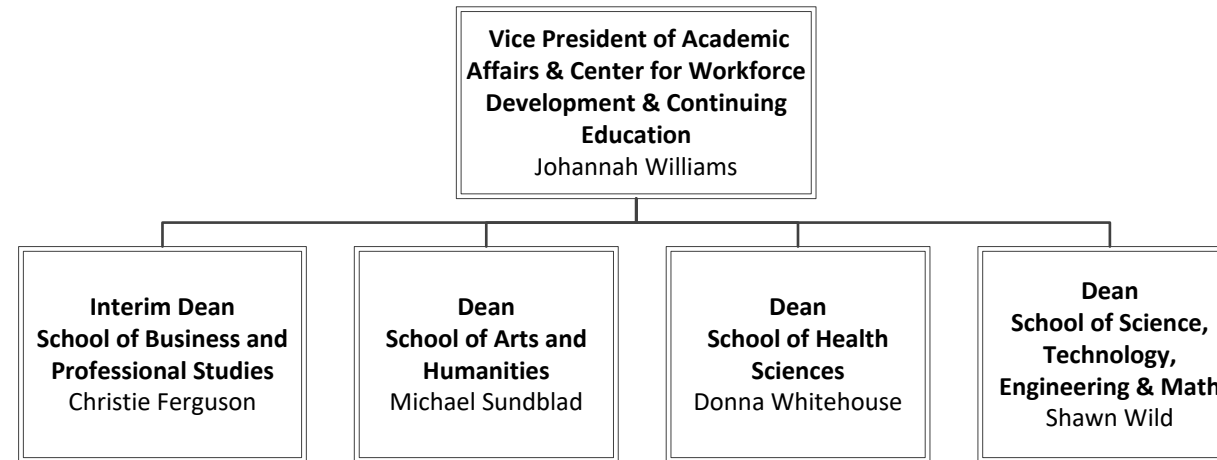
# Office of the Center for Workforce Development & Continuing Education



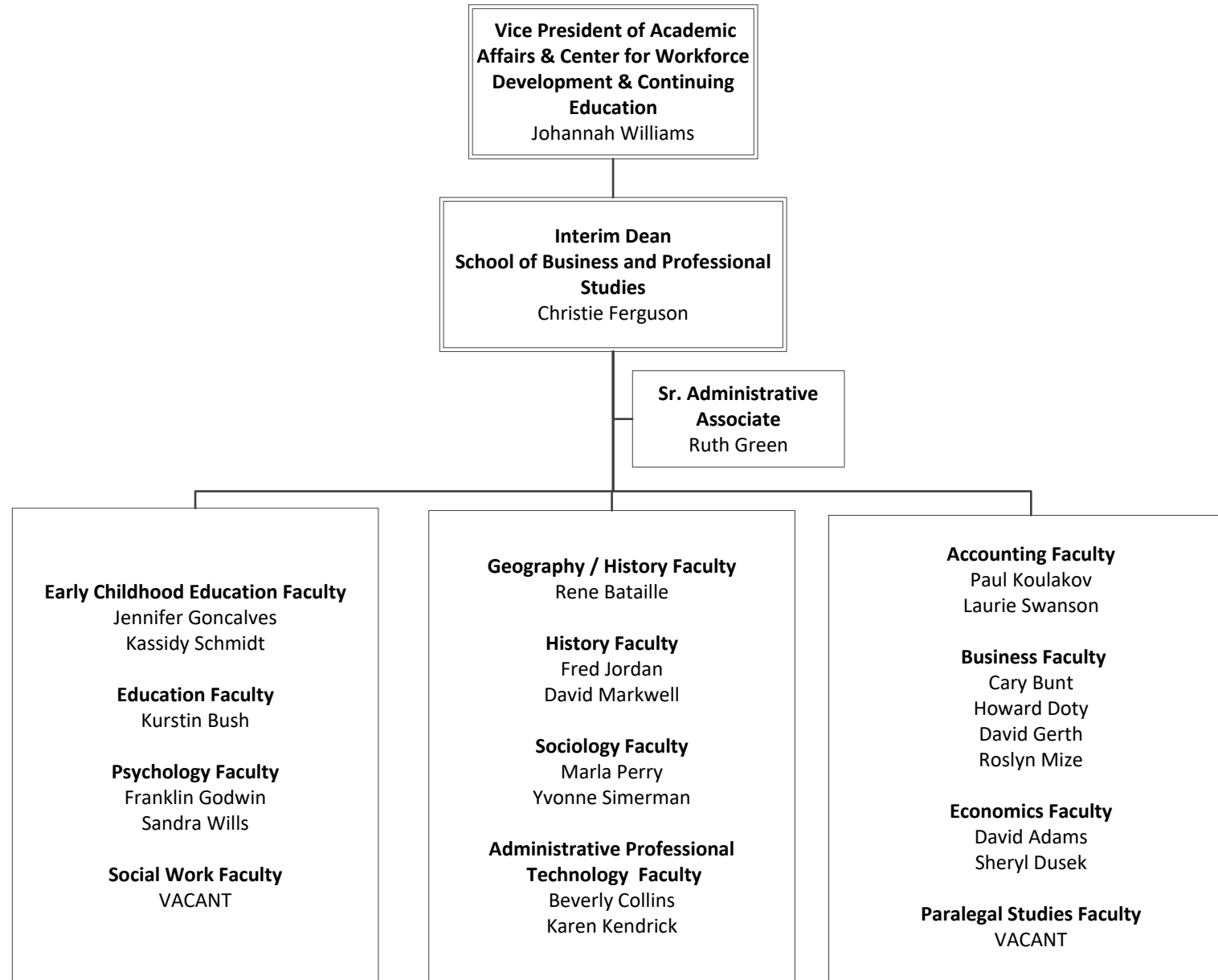
# Office of Learning Resources



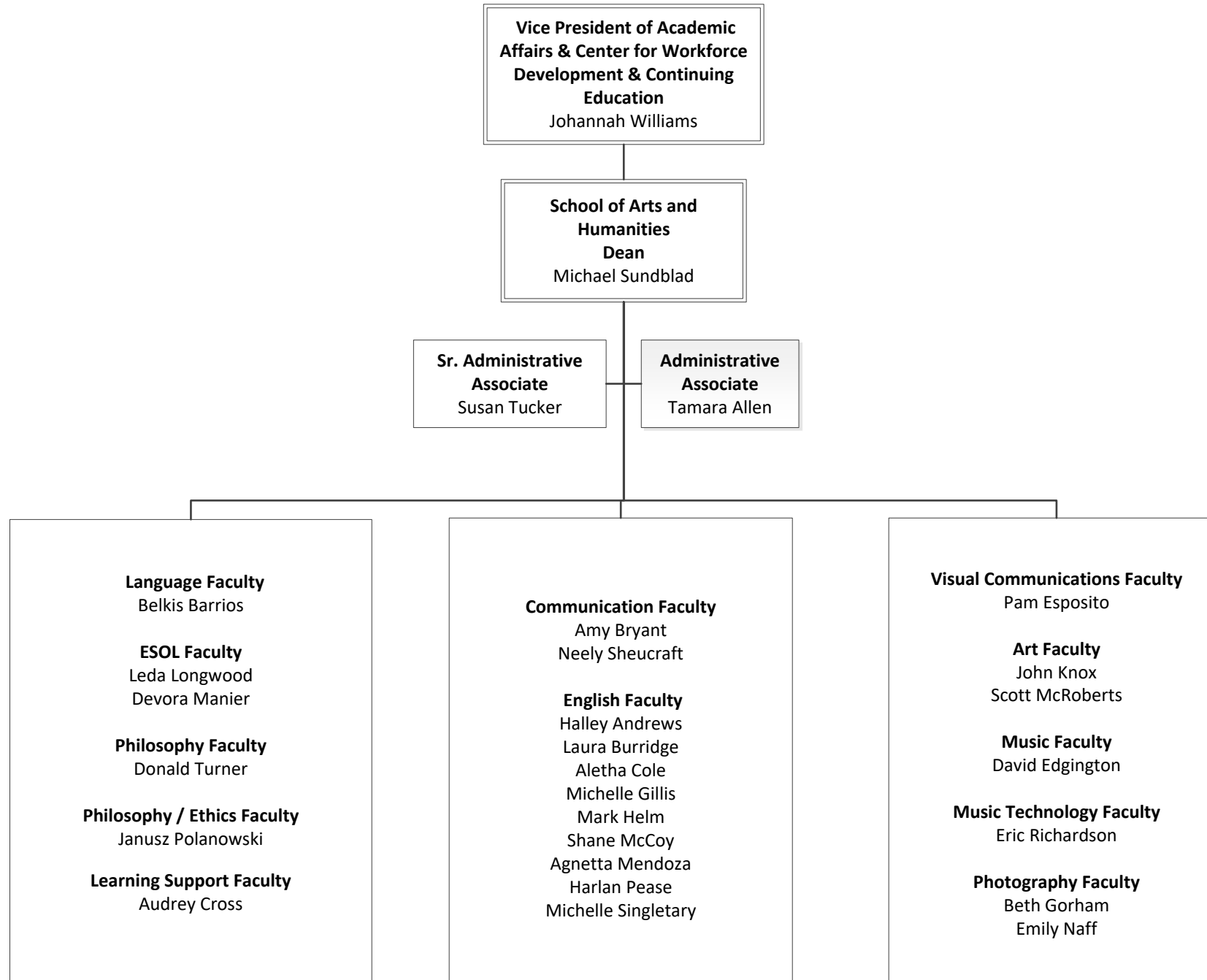
# Academic Divisions



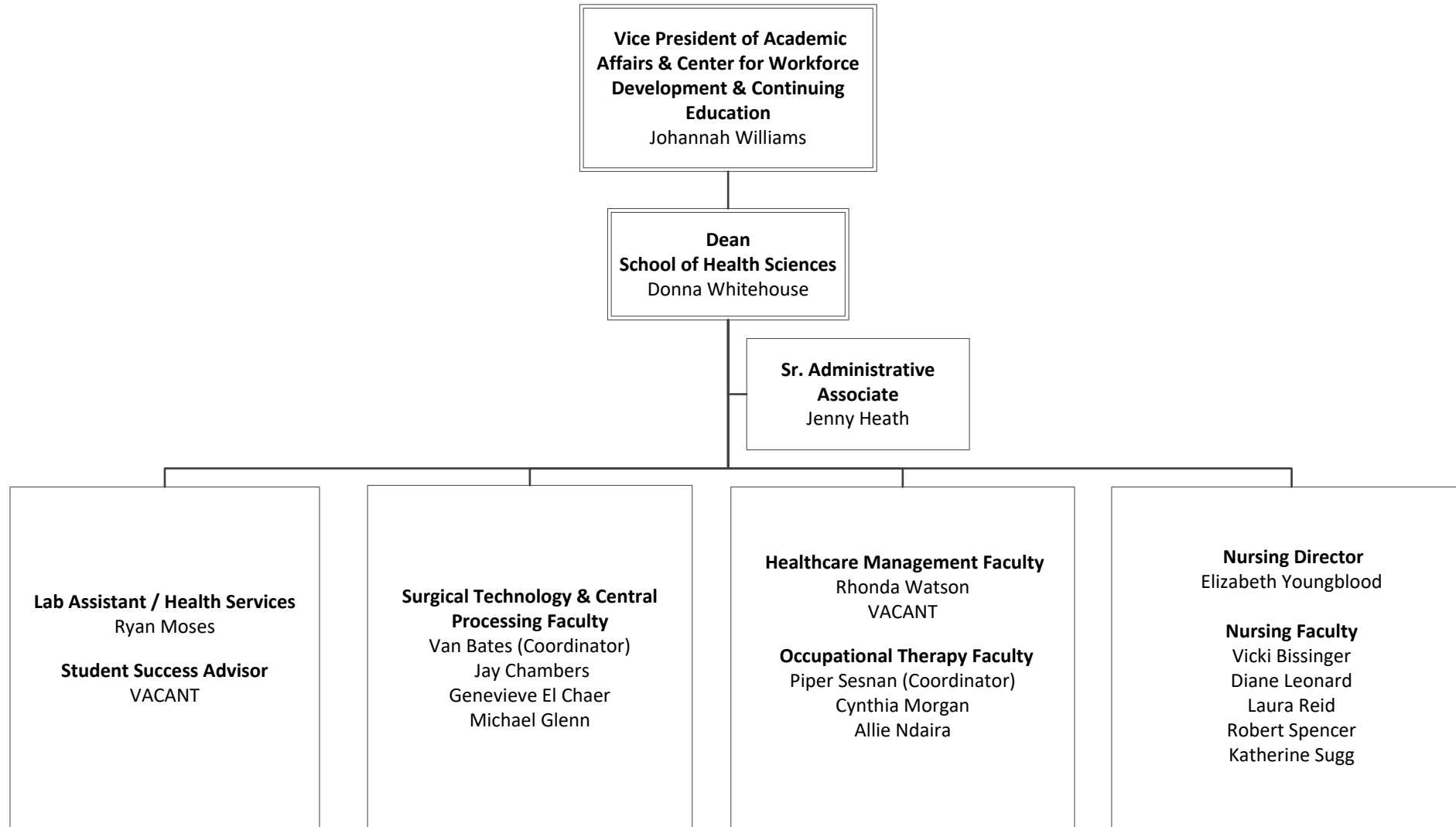
# School of Business and Professional Studies



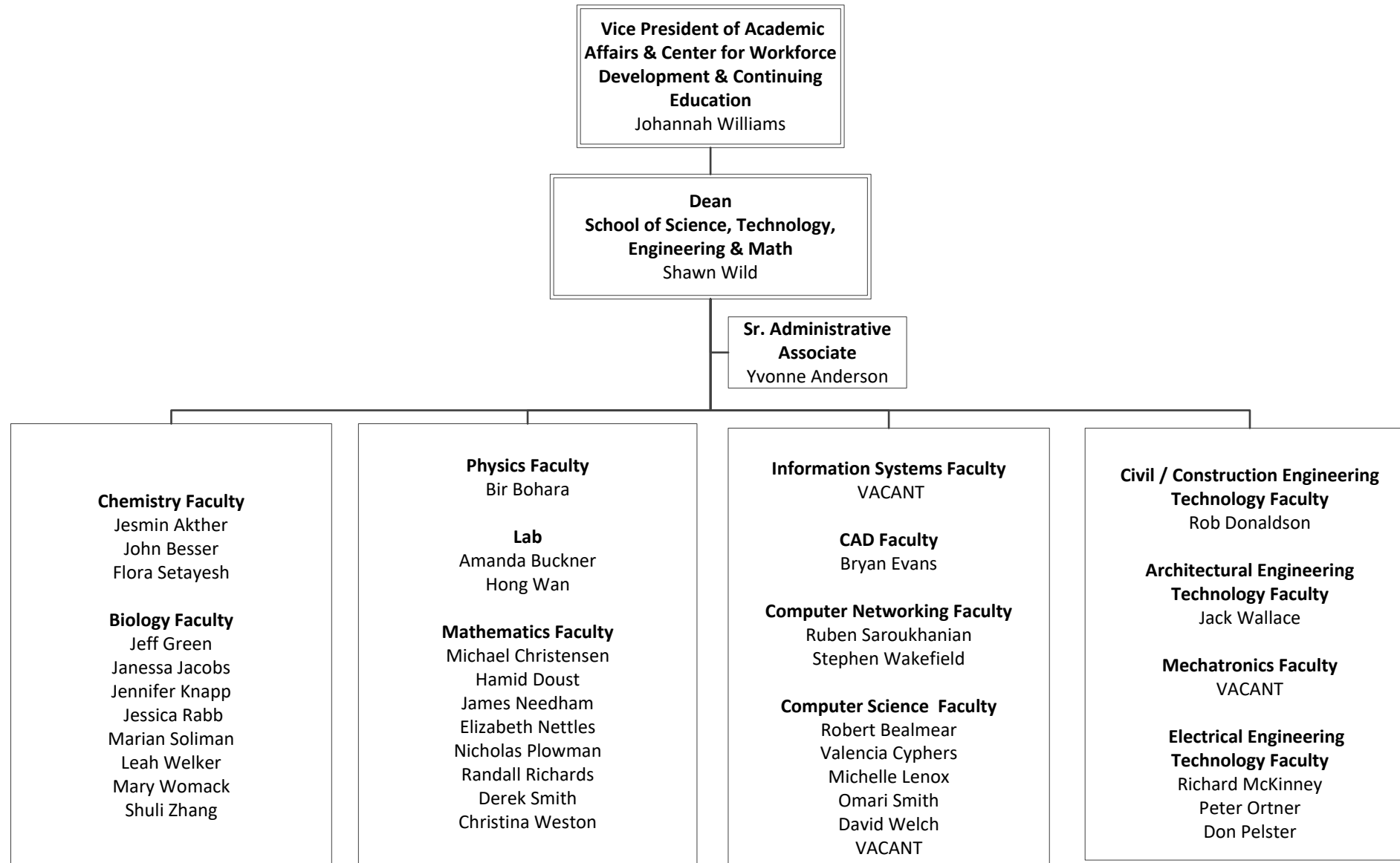
# School of Arts and Humanities



# School of Health Sciences

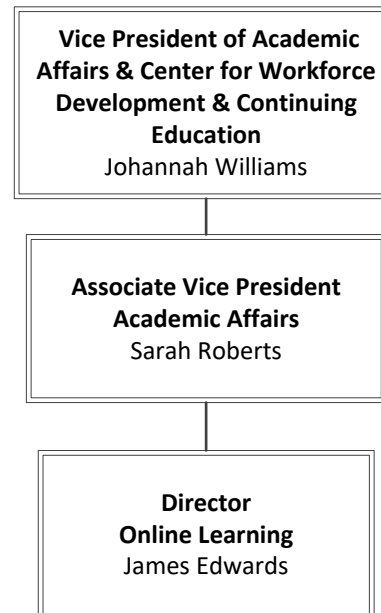


# School of Science, Technology, Engineering & Math

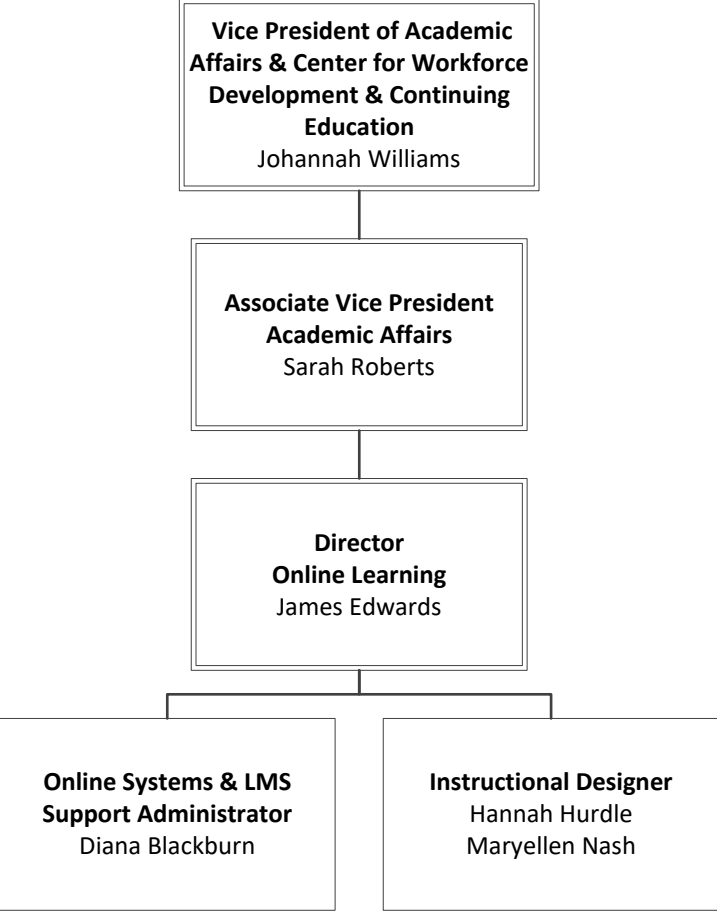




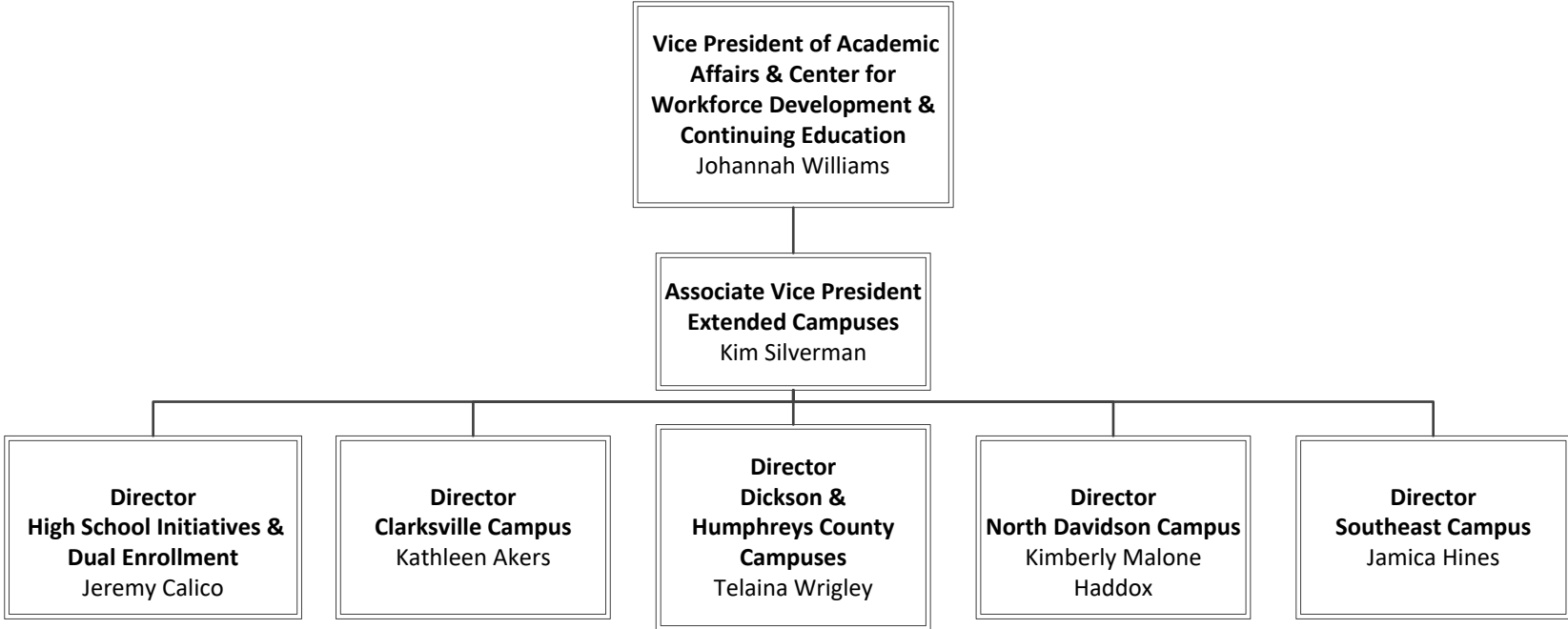
# Office of the Associate Vice President for Academic Affairs



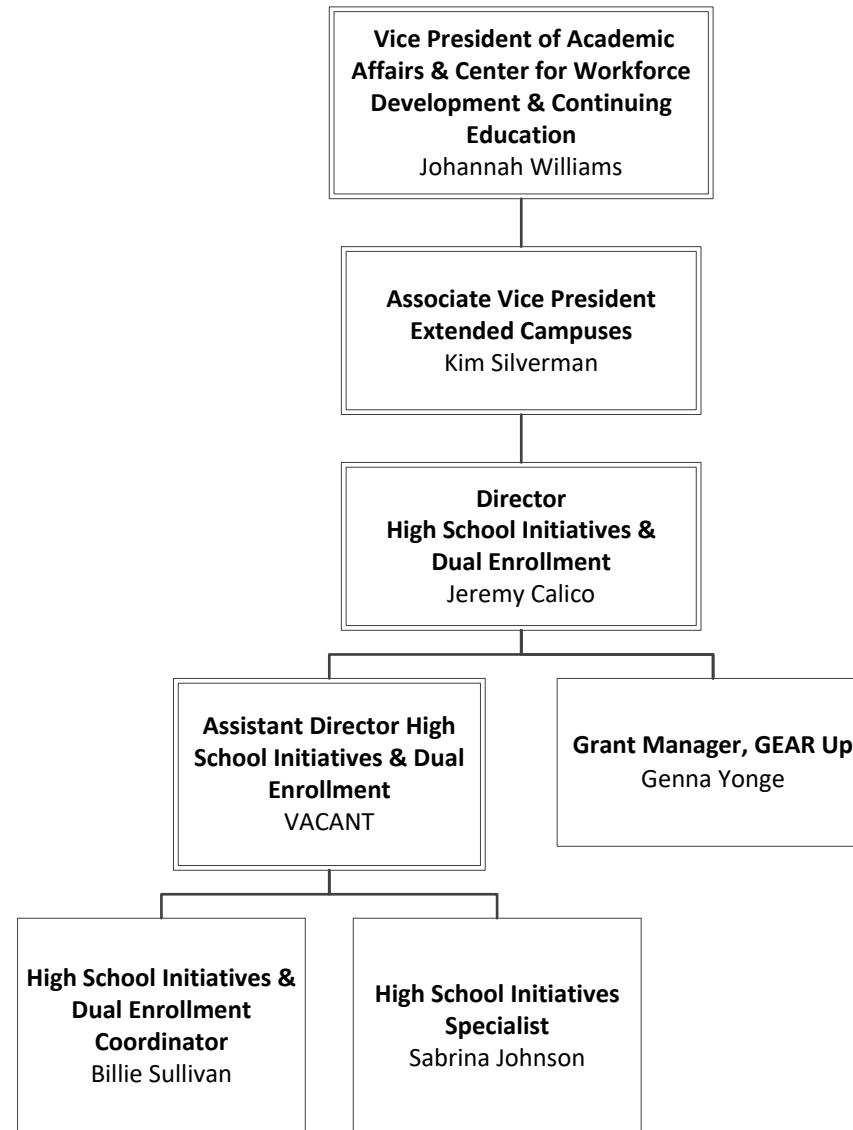
# Office of Online Learning



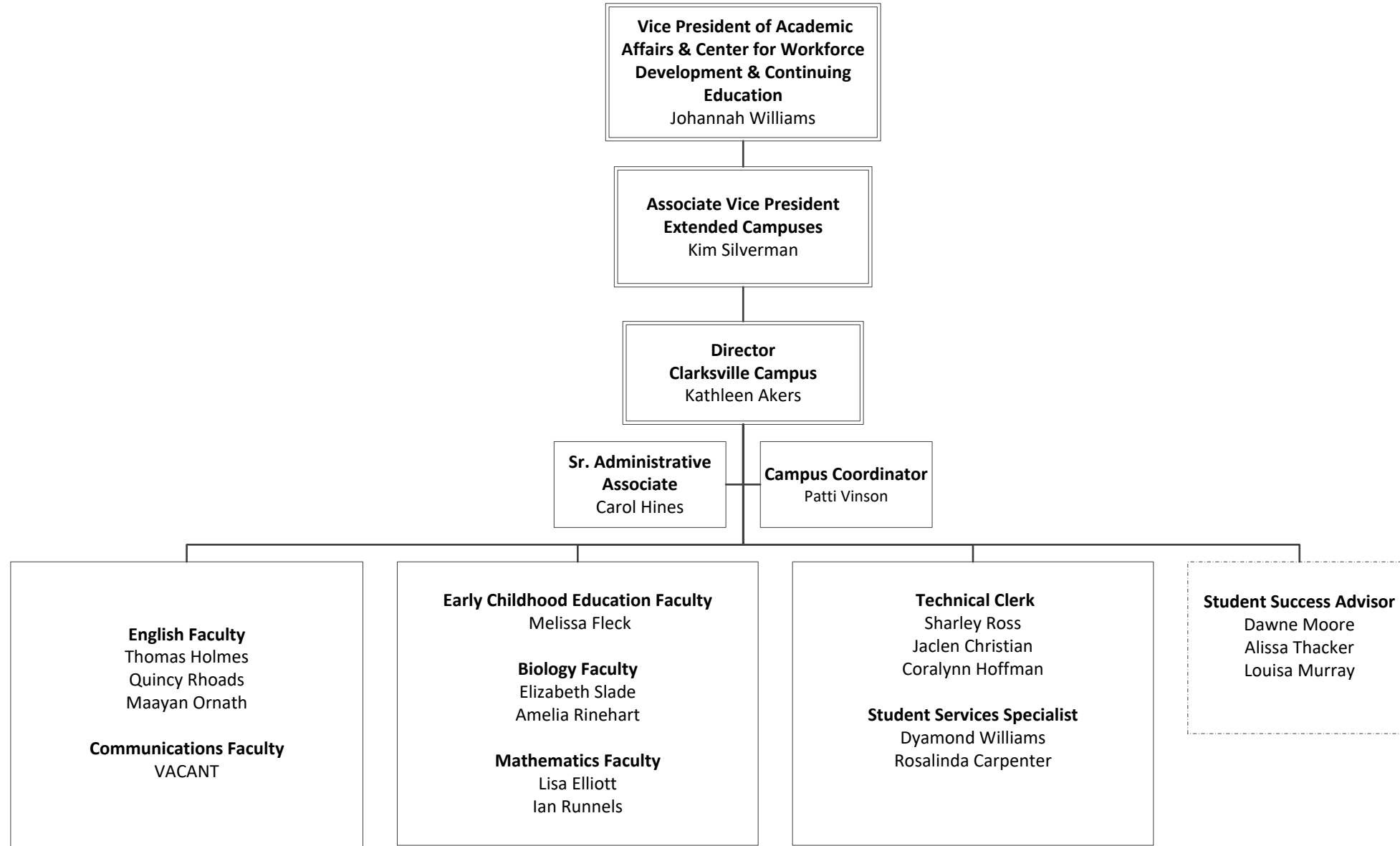
# Office of the Associate Vice President for Extended Campuses



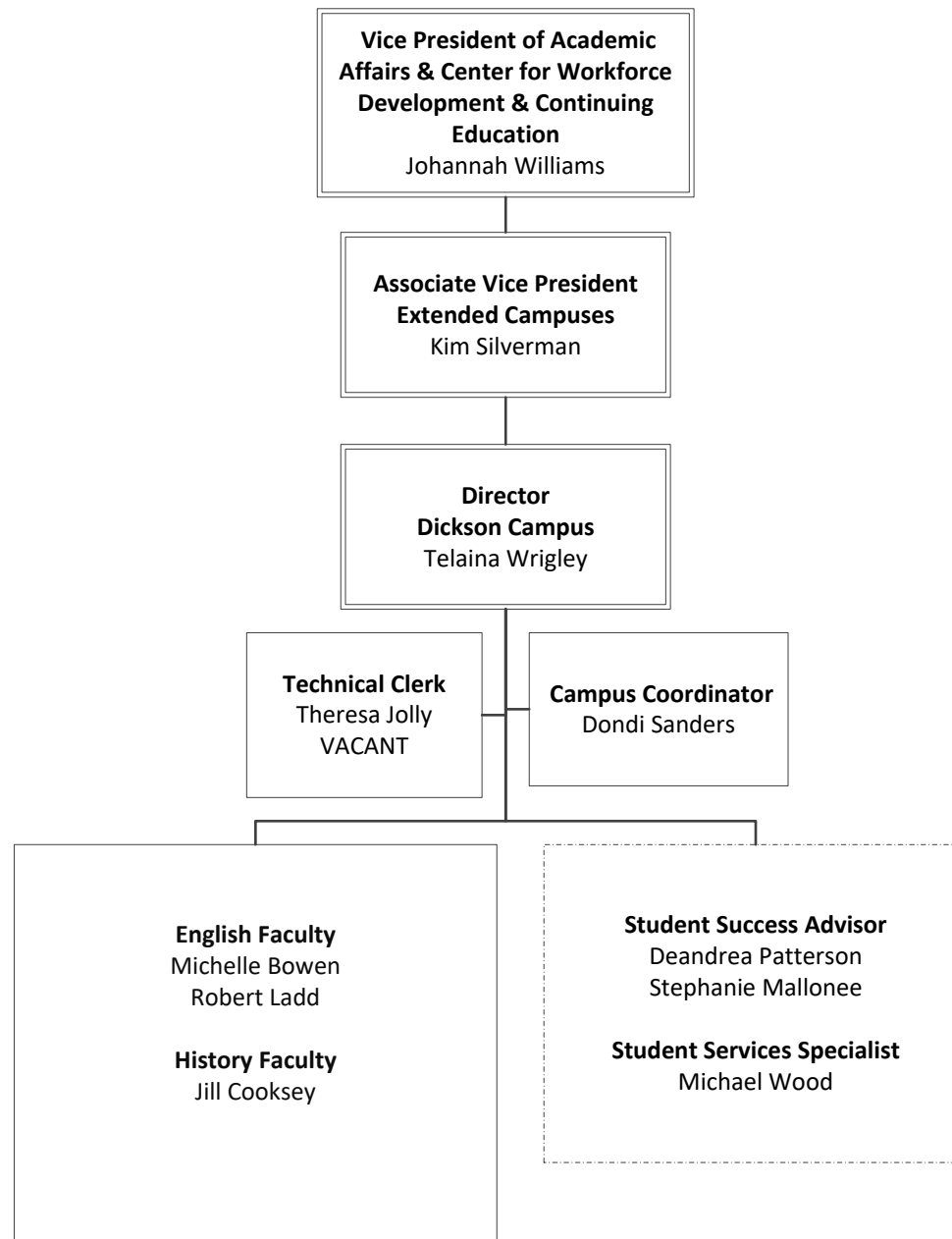
# Office of High School Initiatives and Dual Enrollment



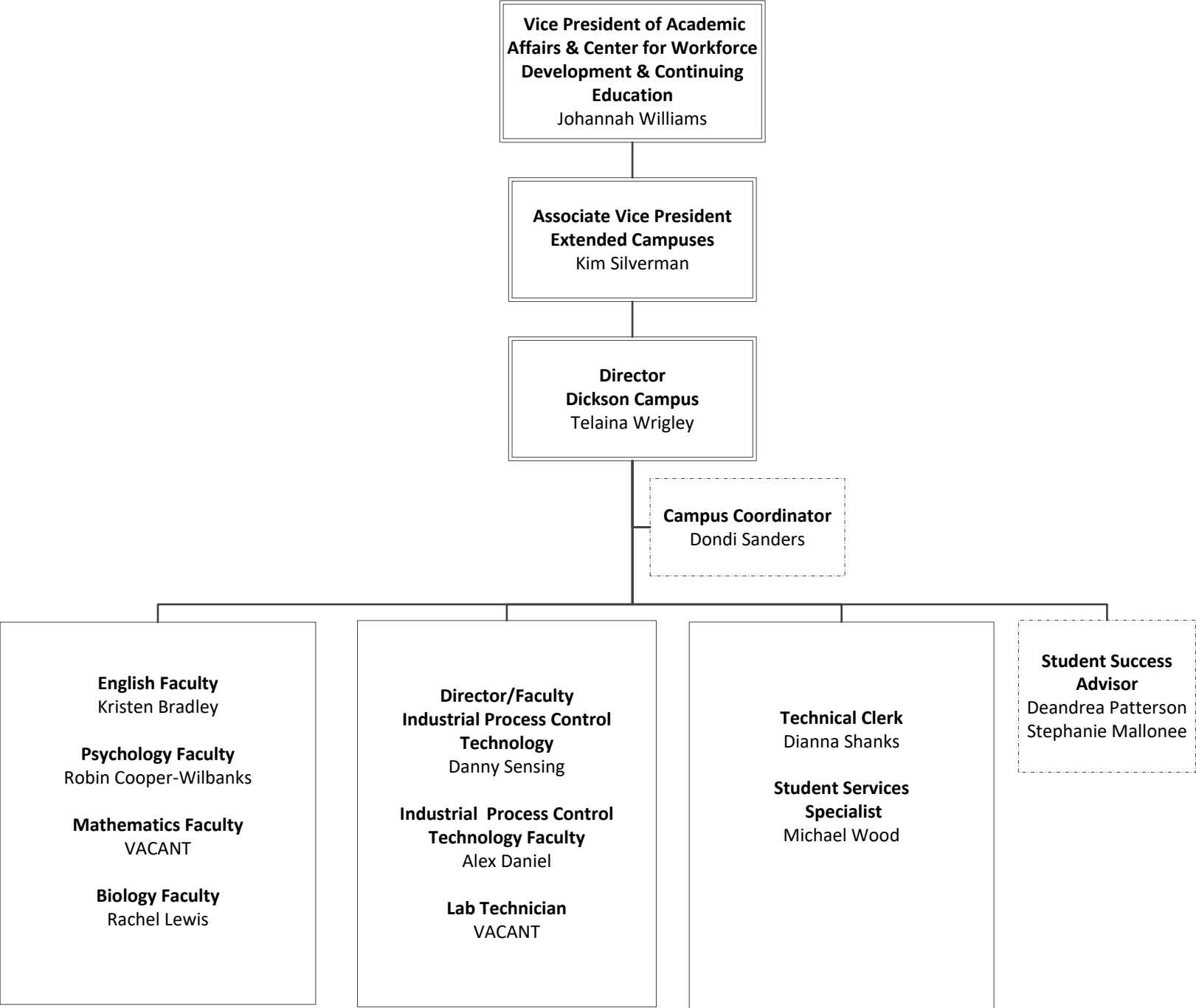
# Clarksville Campus



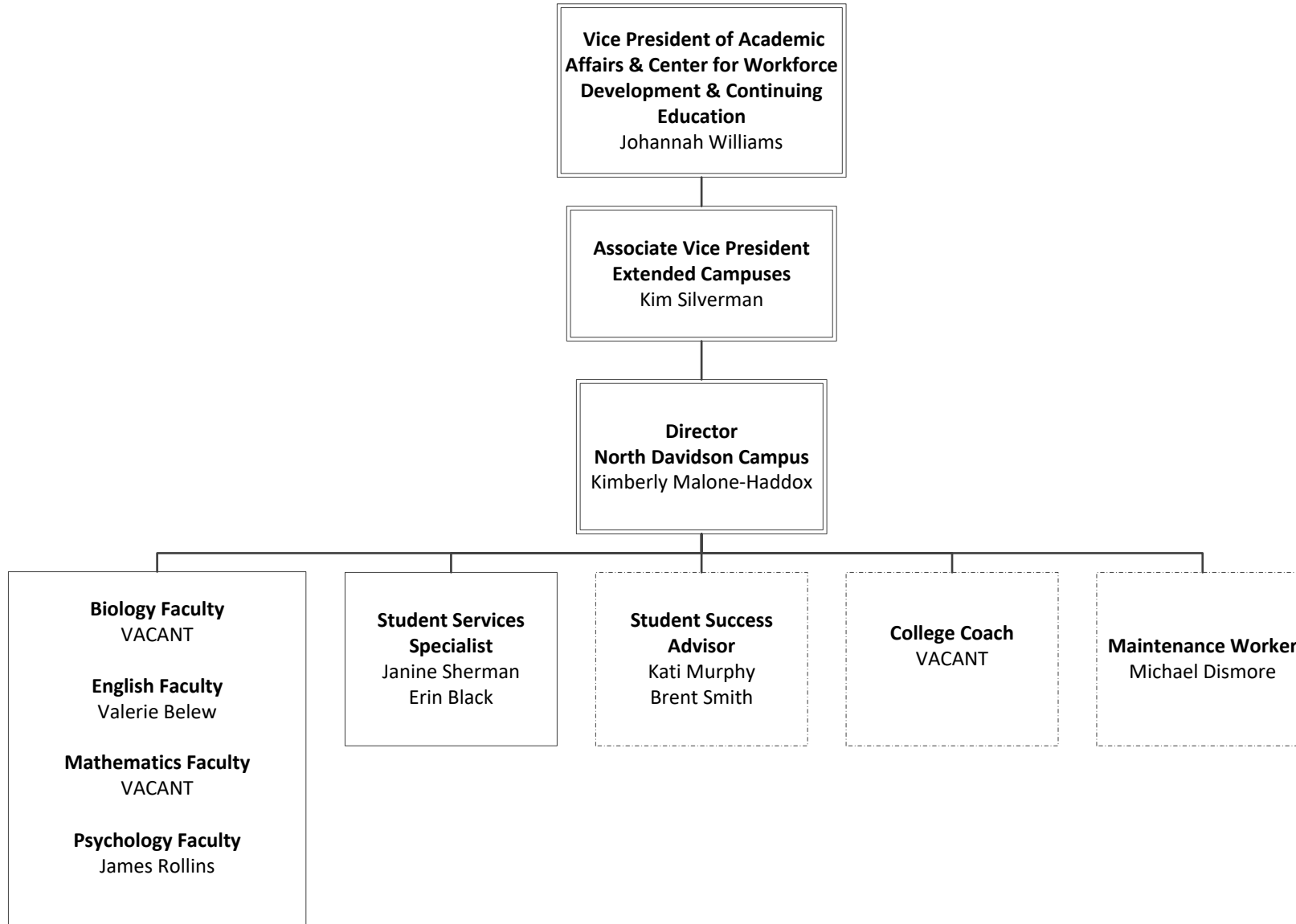
# Dickson Campus



# Humphreys County Campus



# North Davidson Campus





# Southeast Campus

