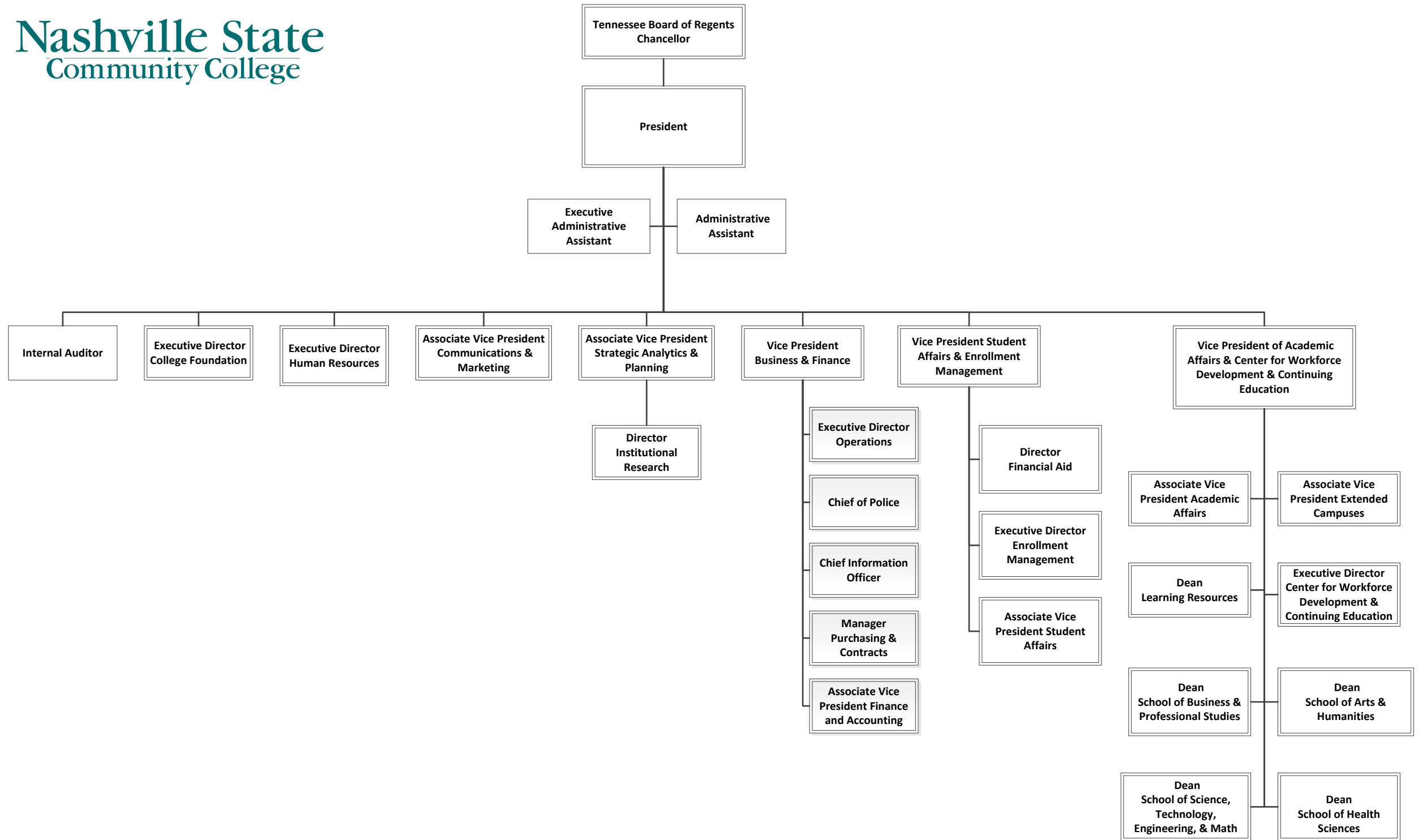


**NASHVILLE STATE COMMUNITY COLLEGE
ORGANIZATIONAL CHART**



President

President's Office

Office of the President

Office of the Internal Auditor

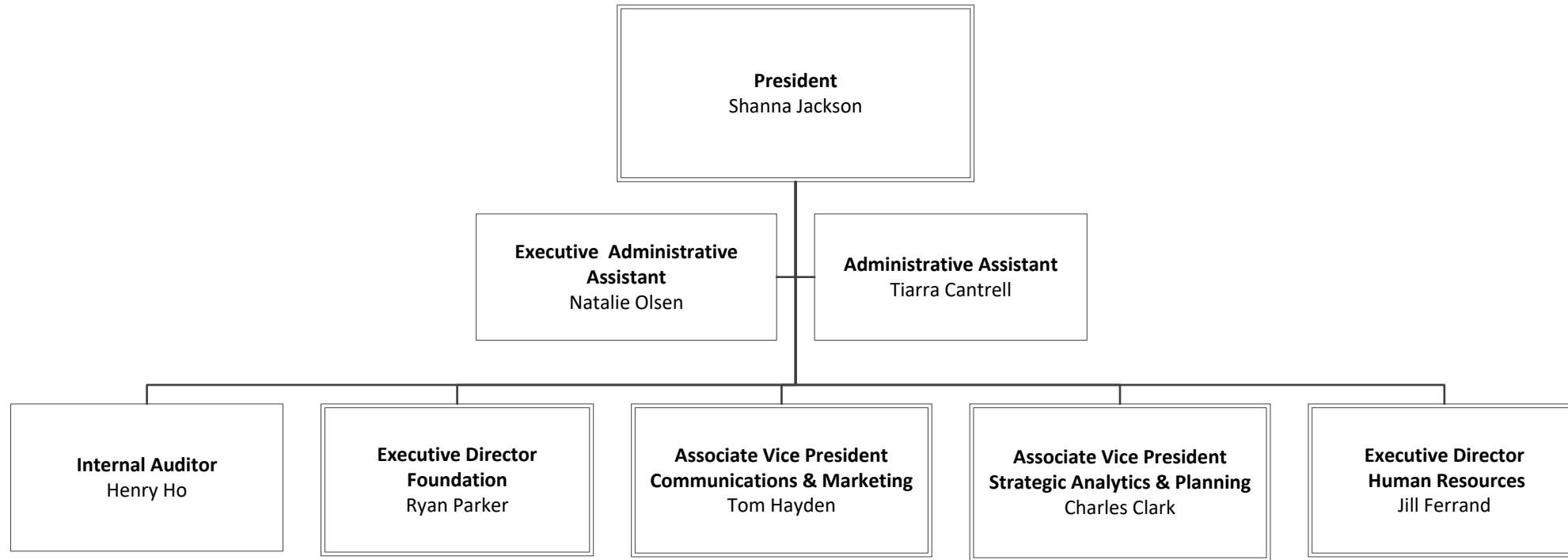
College Foundation

Office of Communication & Marketing

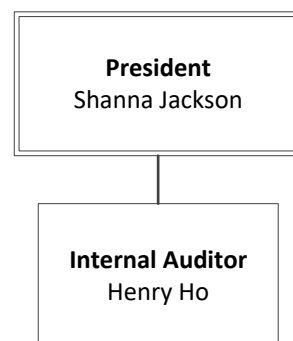
Office of Strategic Analytics & Planning

Office of Human Resources

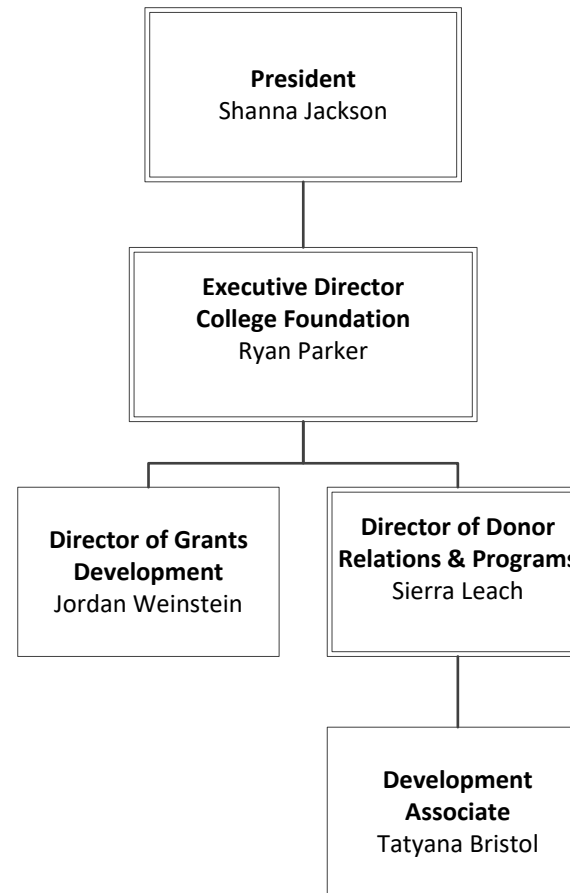
Office of the President



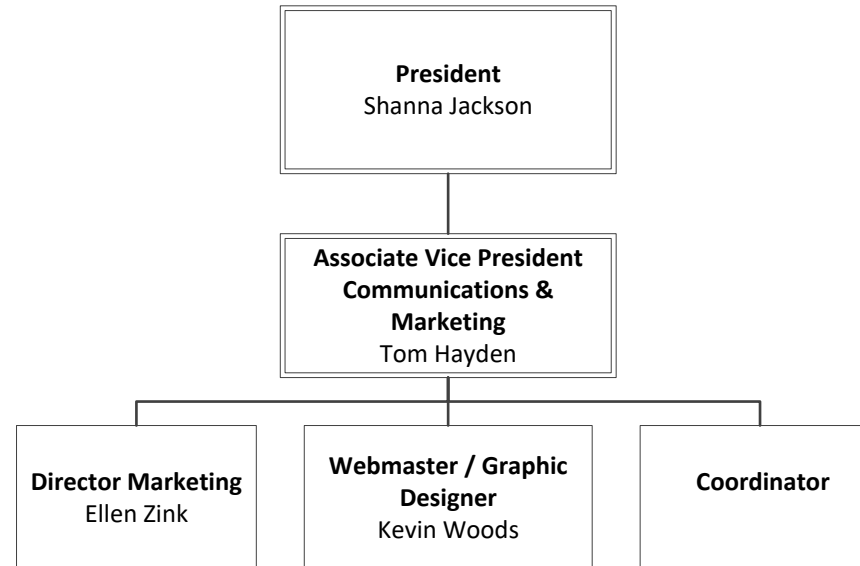
Office of the Internal Auditor



College Foundation



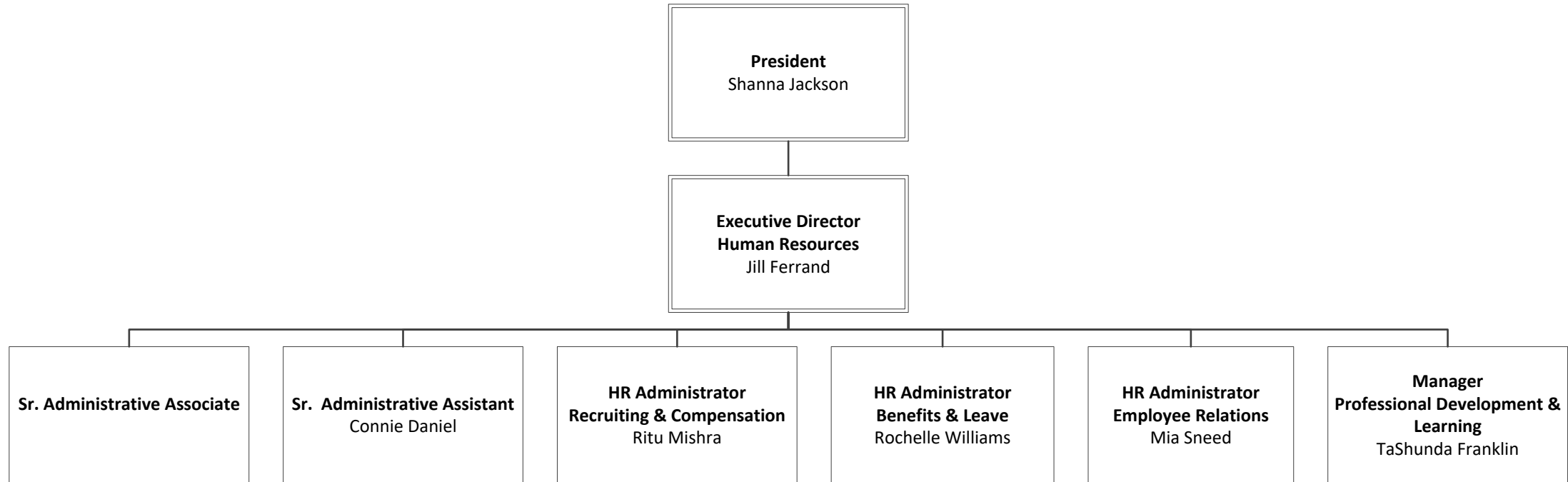
Office of Communication and Marketing



Office of Strategic Analytics and Planning



Office of Human Resources



Vice President of Business & Finance

Vice President for Business & Finance

Office of the Vice President of Business & Finance

Office of Facilities Management

Office of Police and Security

Office of Technology Services

Office of Purchasing and Contracts

Office of the Associate Vice President Finance & Accounting

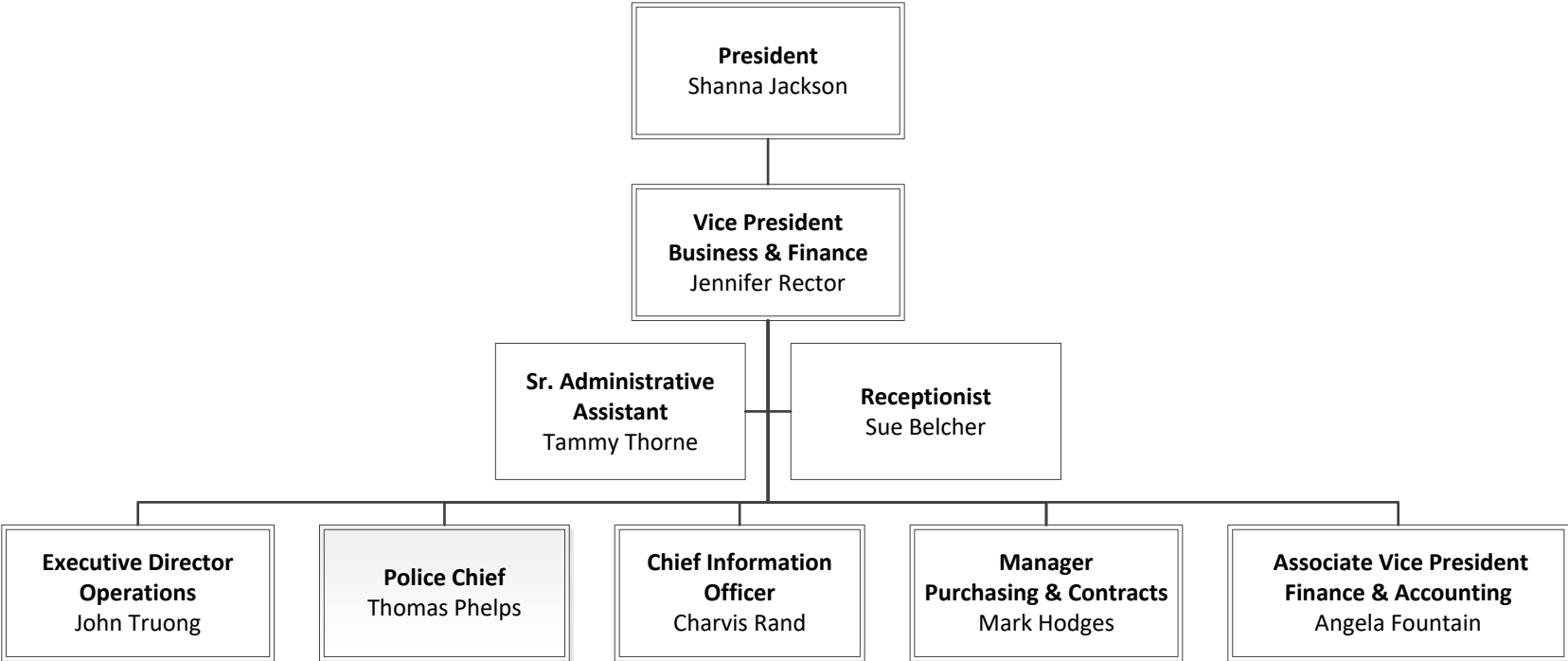
Office of Accounting & External Reporting

Office of Payroll

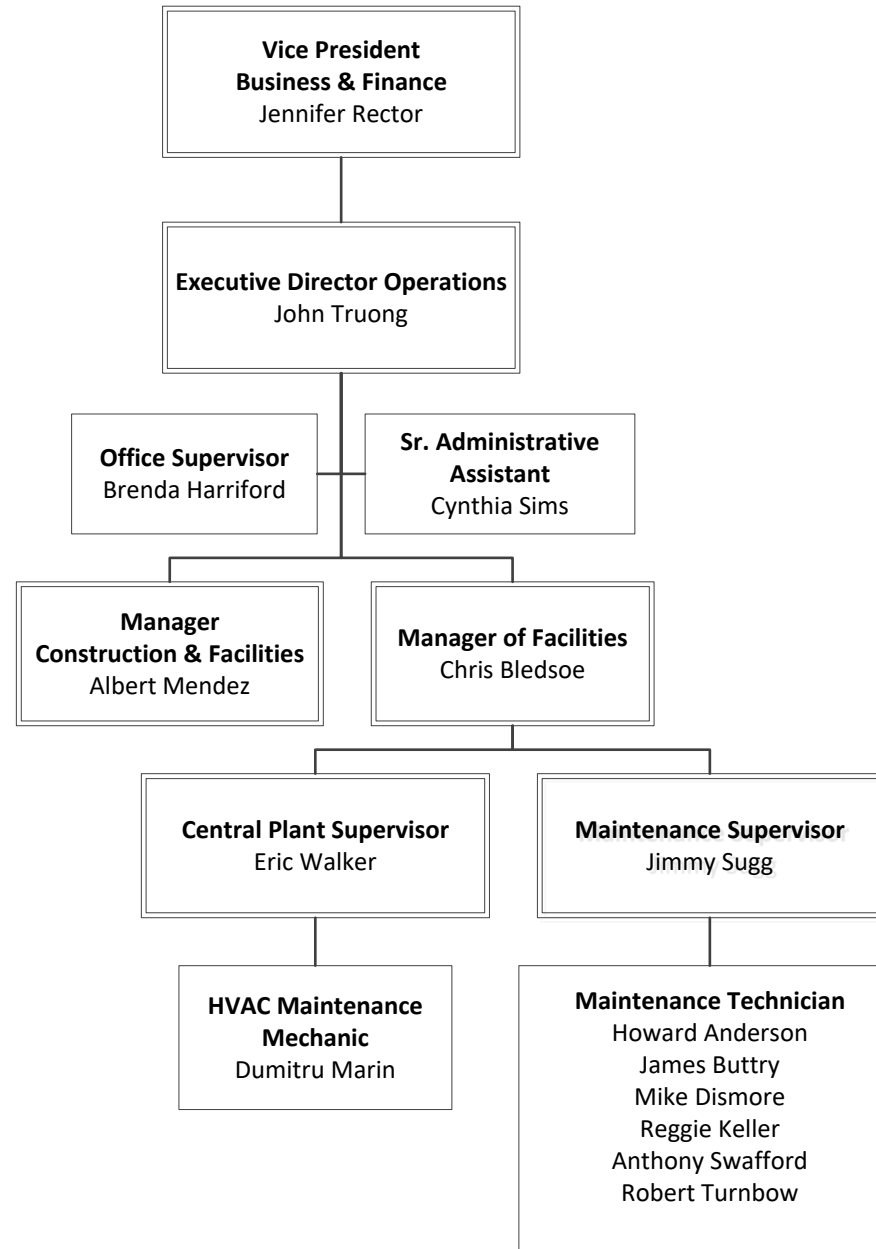
Office of Budget and Travel

Office of Student Billing and Account Services

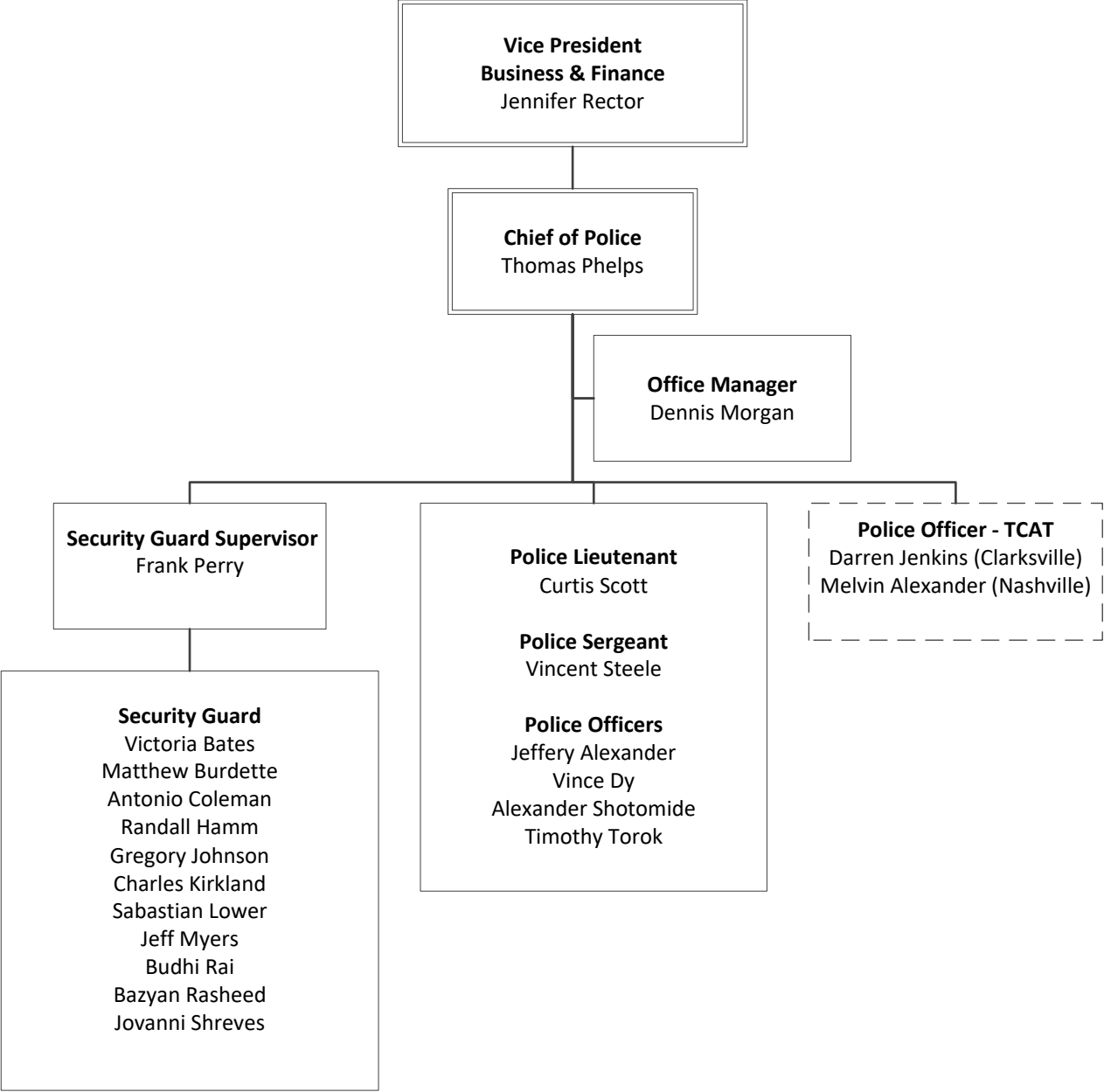
Office of the Vice President for Business & Finance



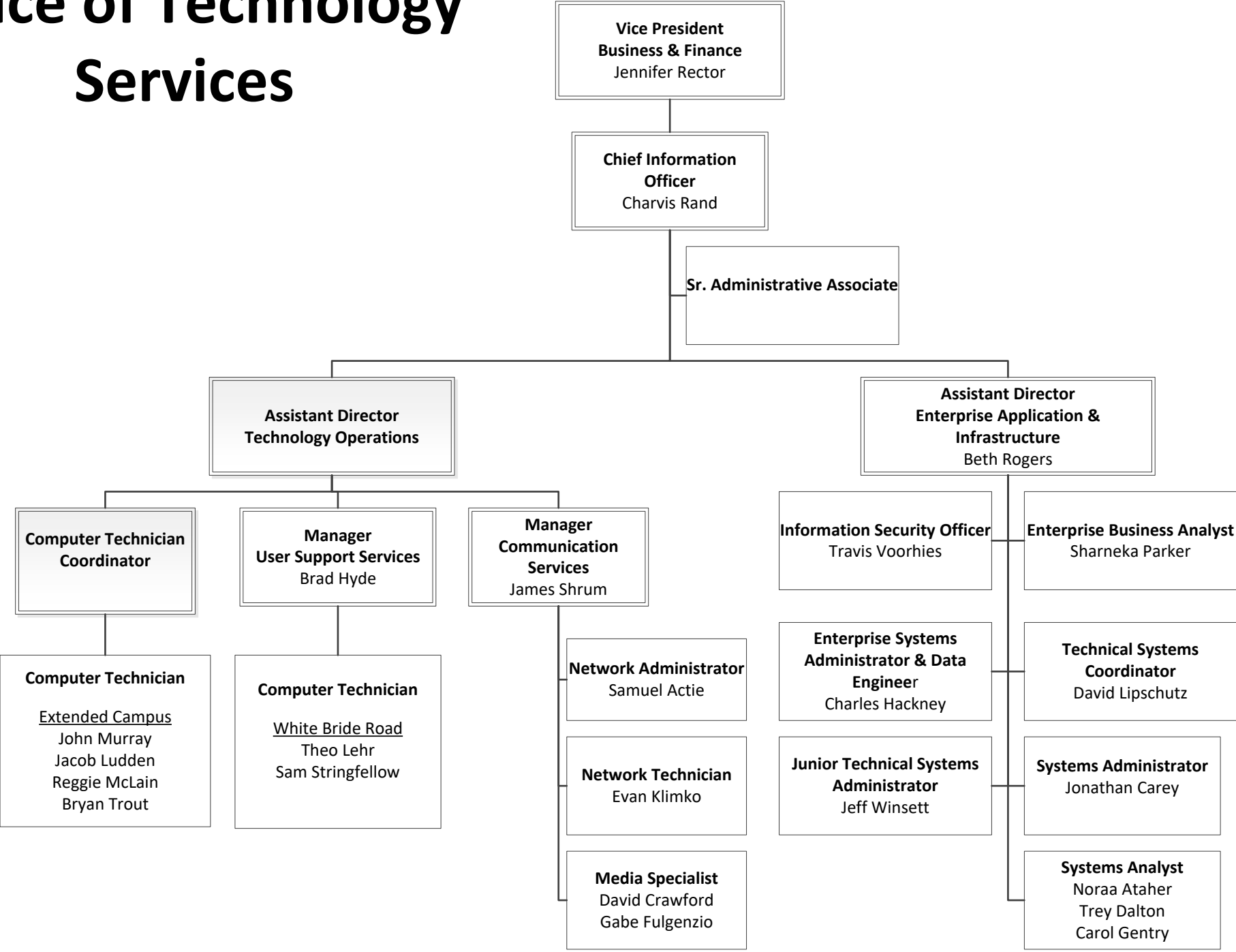
Office of Facilities Management



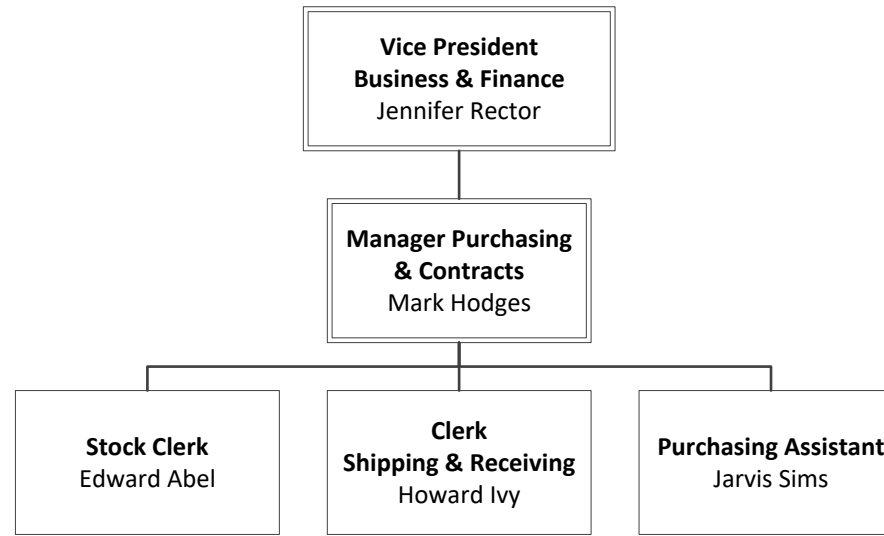
Office of Police and Security



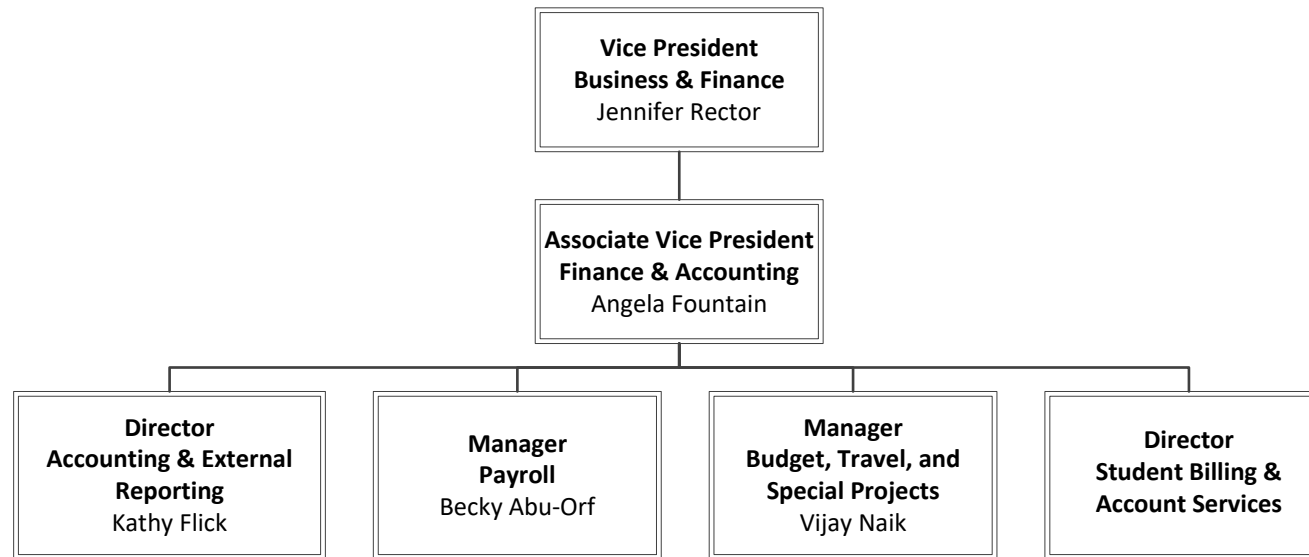
Office of Technology Services



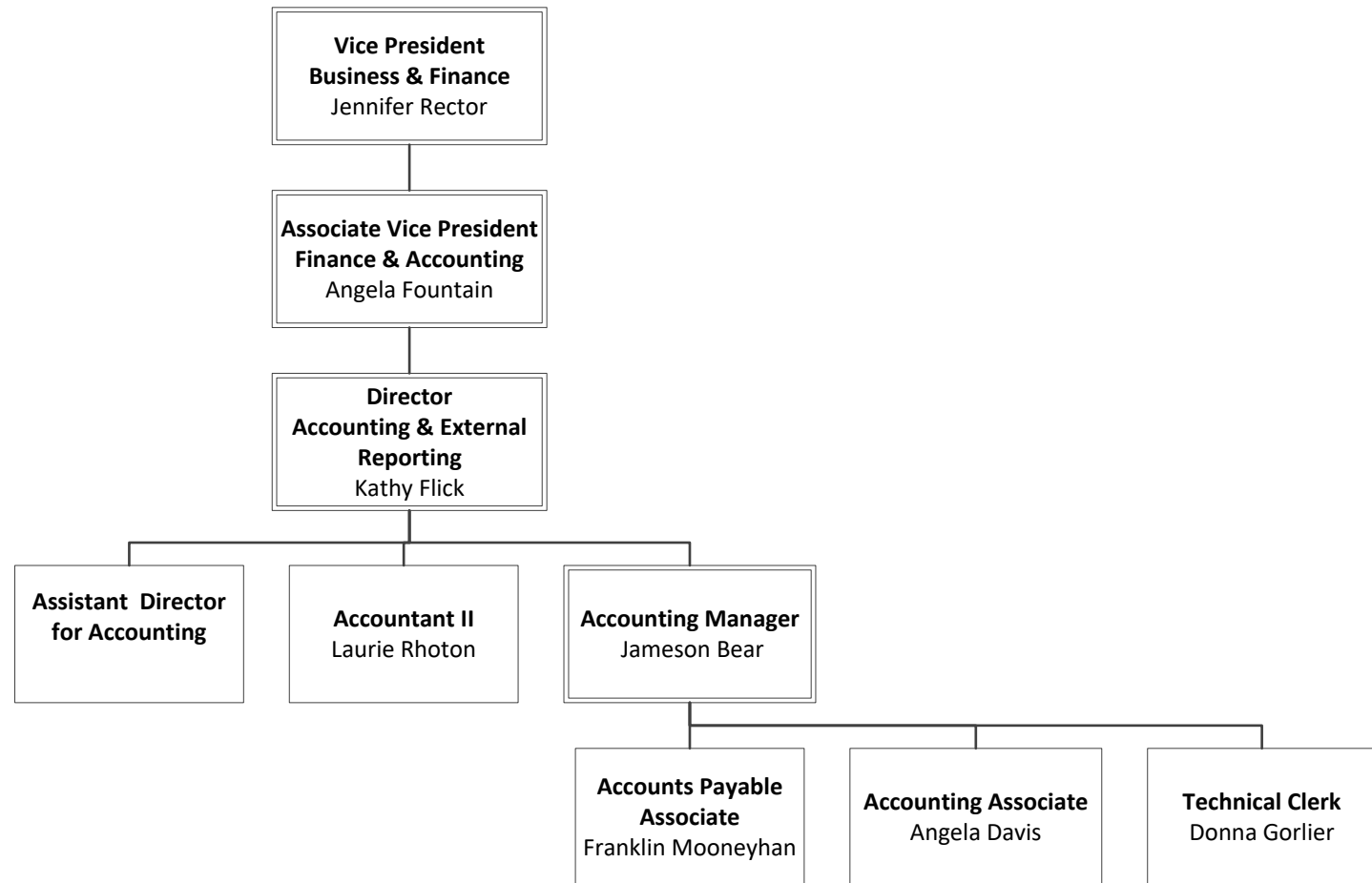
Office of Purchasing & Contracts



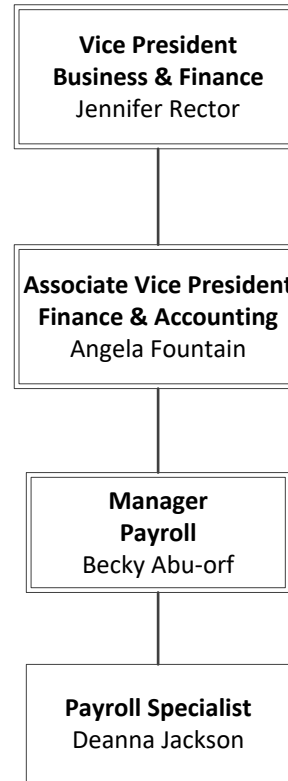
Office of the Associate Vice President for Finance & Accounting



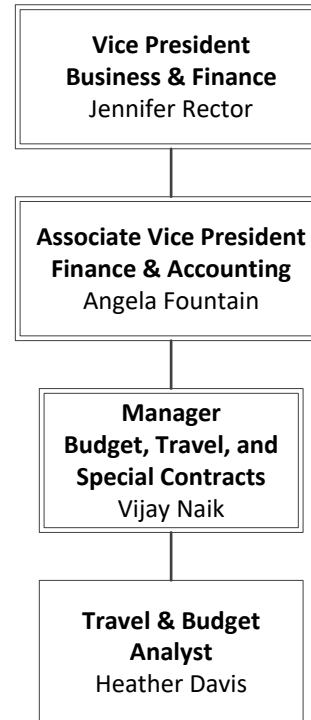
Office of Accounting & External Reporting



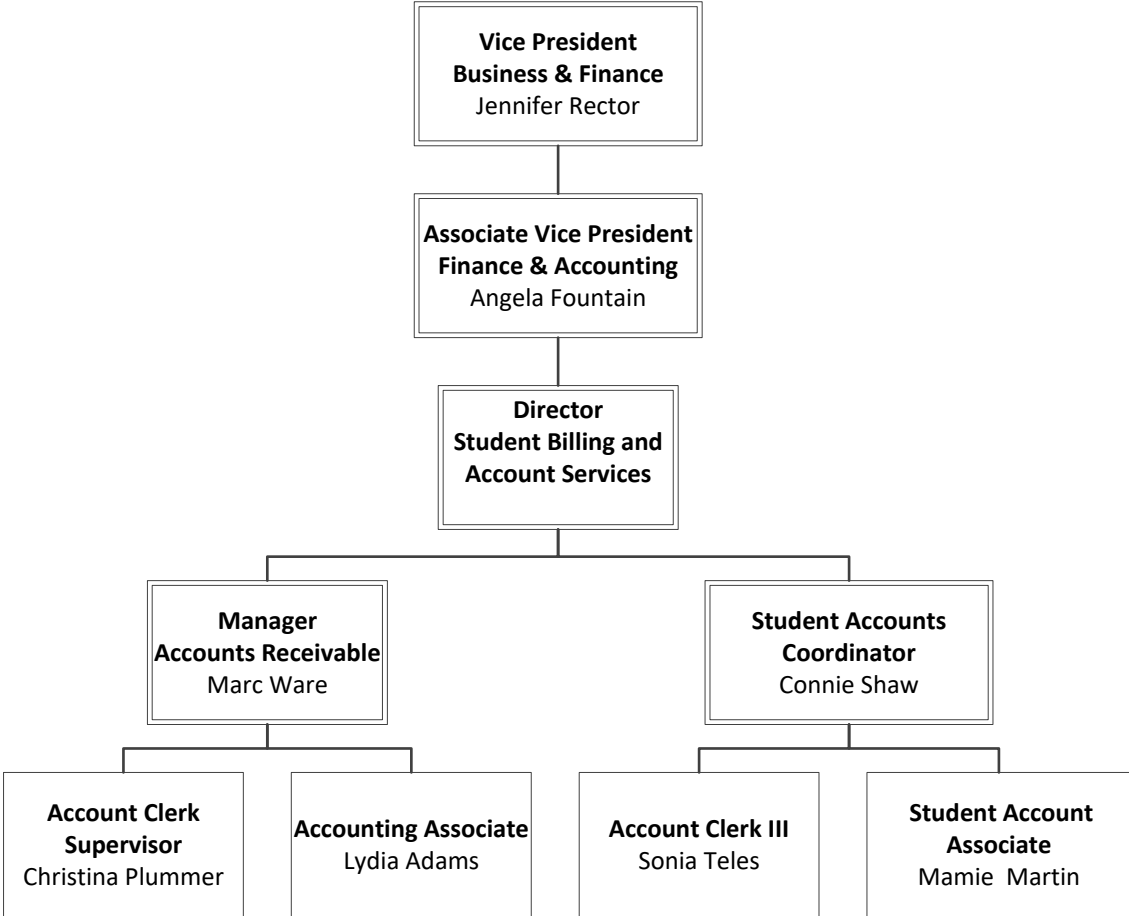
Office of Payroll



Office of Budget and Travel



Office of Student Billing and Account Services



Vice President of Student Affairs & Enrollment Management

Vice President for Student Affairs and Enrollment Management

Office of the Vice President of Student Affairs and Enrollment Management

Office of Financial Aid

Office of Enrollment Services

- Office of Admission & Records
- Office of the Welcome Center and Career Services
- Office of the Testing Center

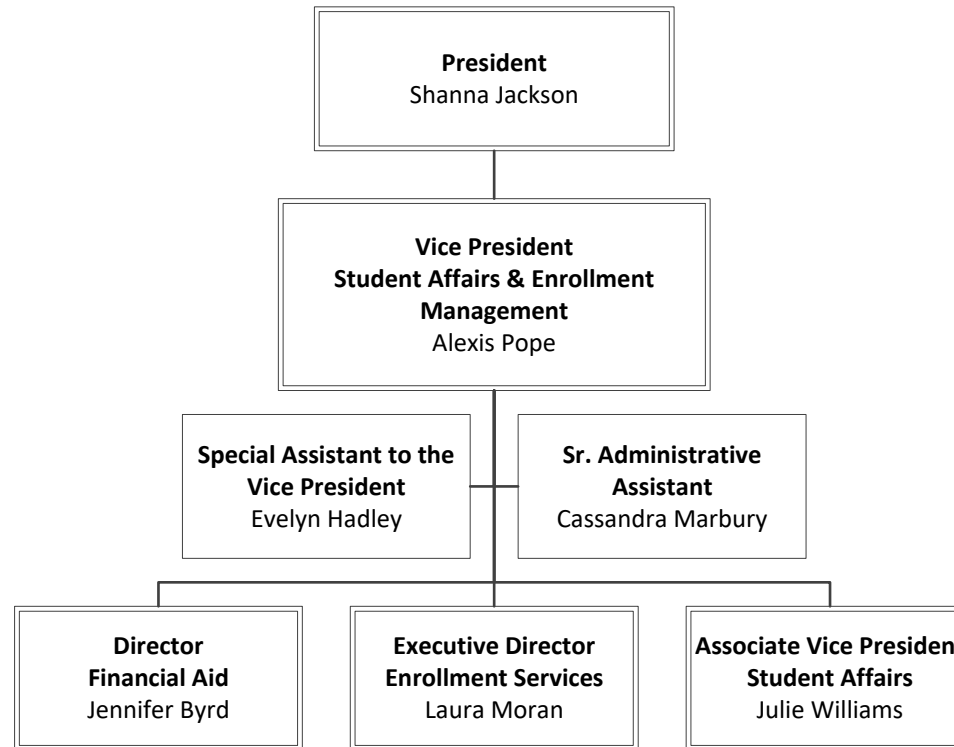
Office of the Associate Vice President for Student Affairs

Office of the Student Success Center

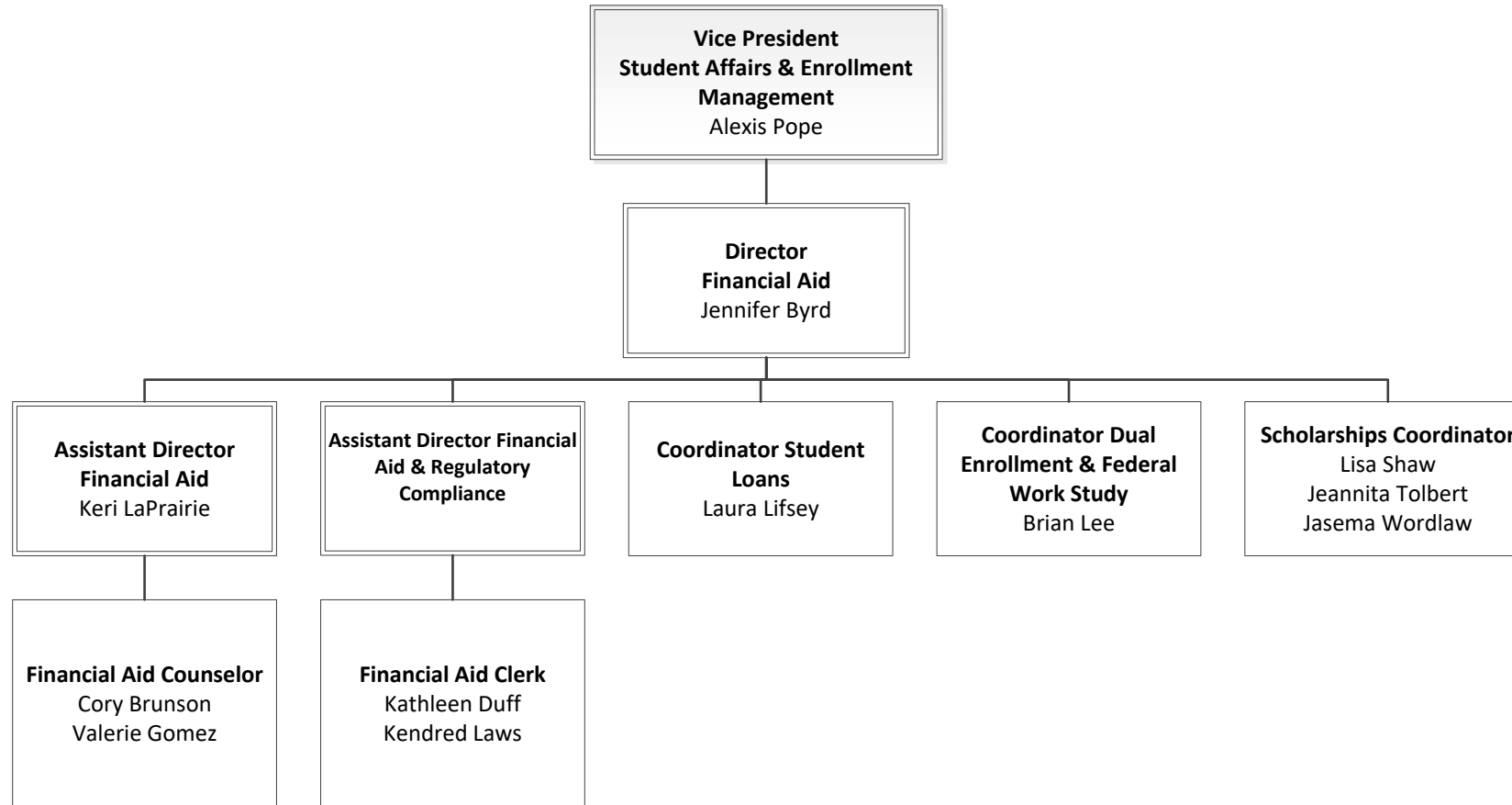
Office of the Access Center

Office of Student Life

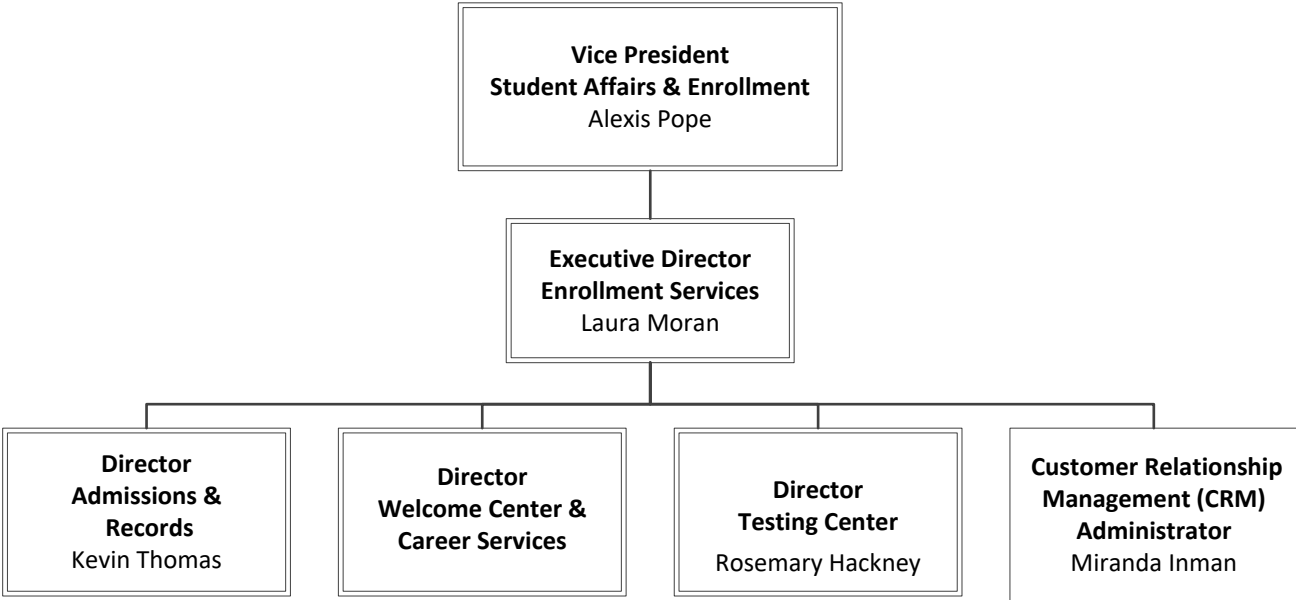
Office of the Vice President for Student Affairs & Enrollment Management



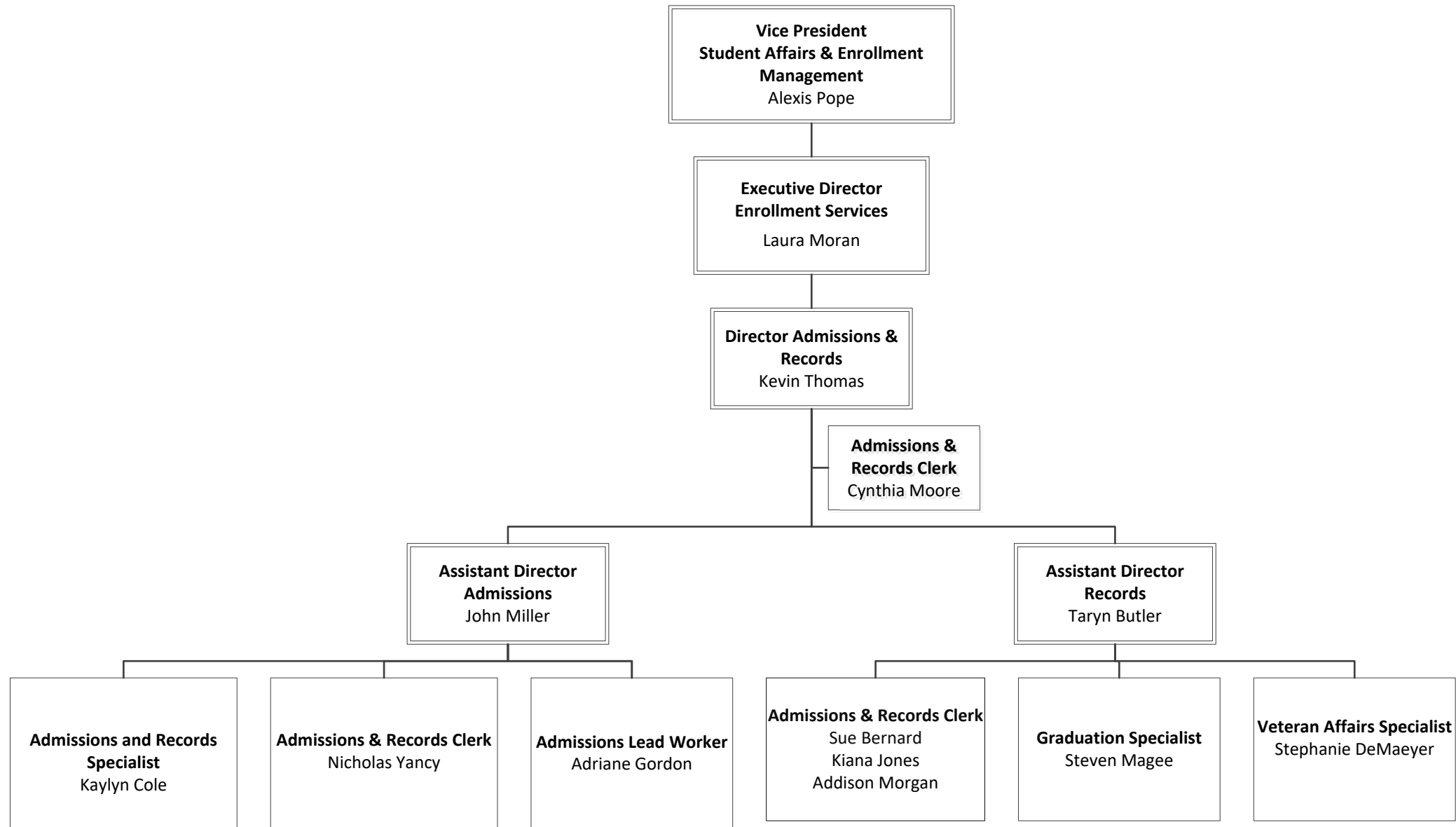
Office of Financial Aid



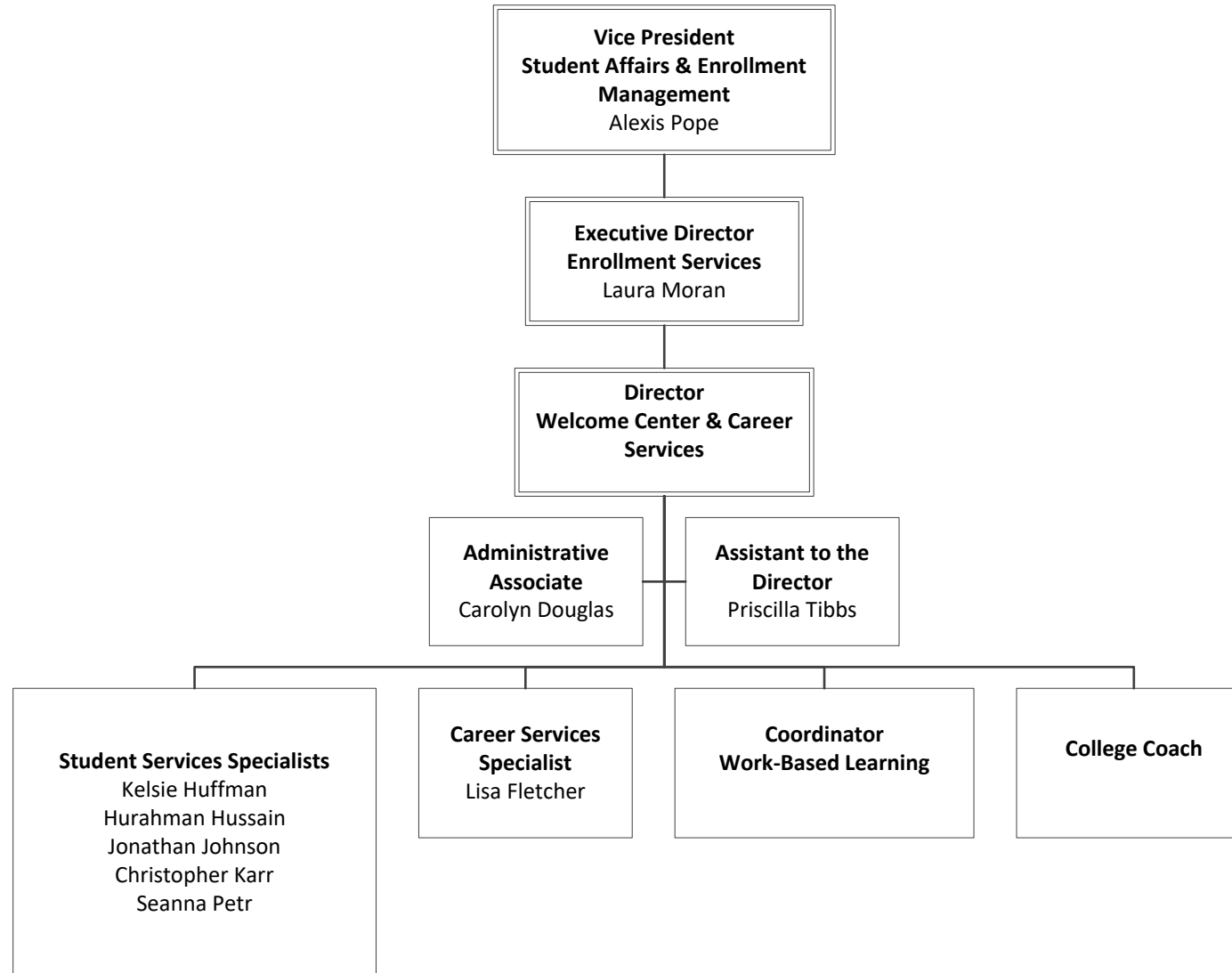
Office of Enrollment Services



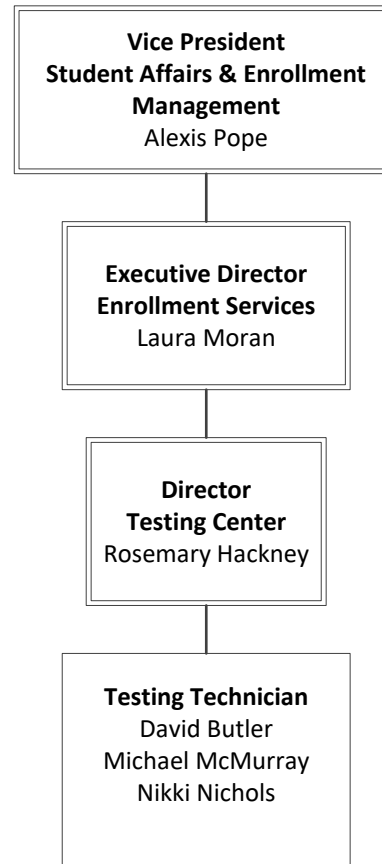
Office of Admissions & Records



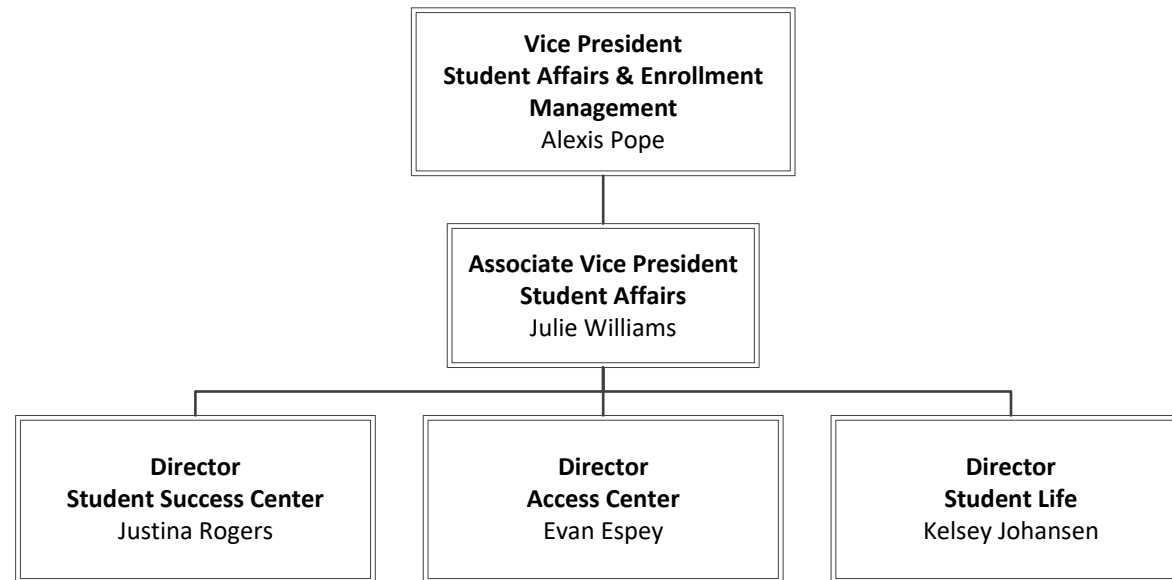
Office of the Welcome Center & Career Services



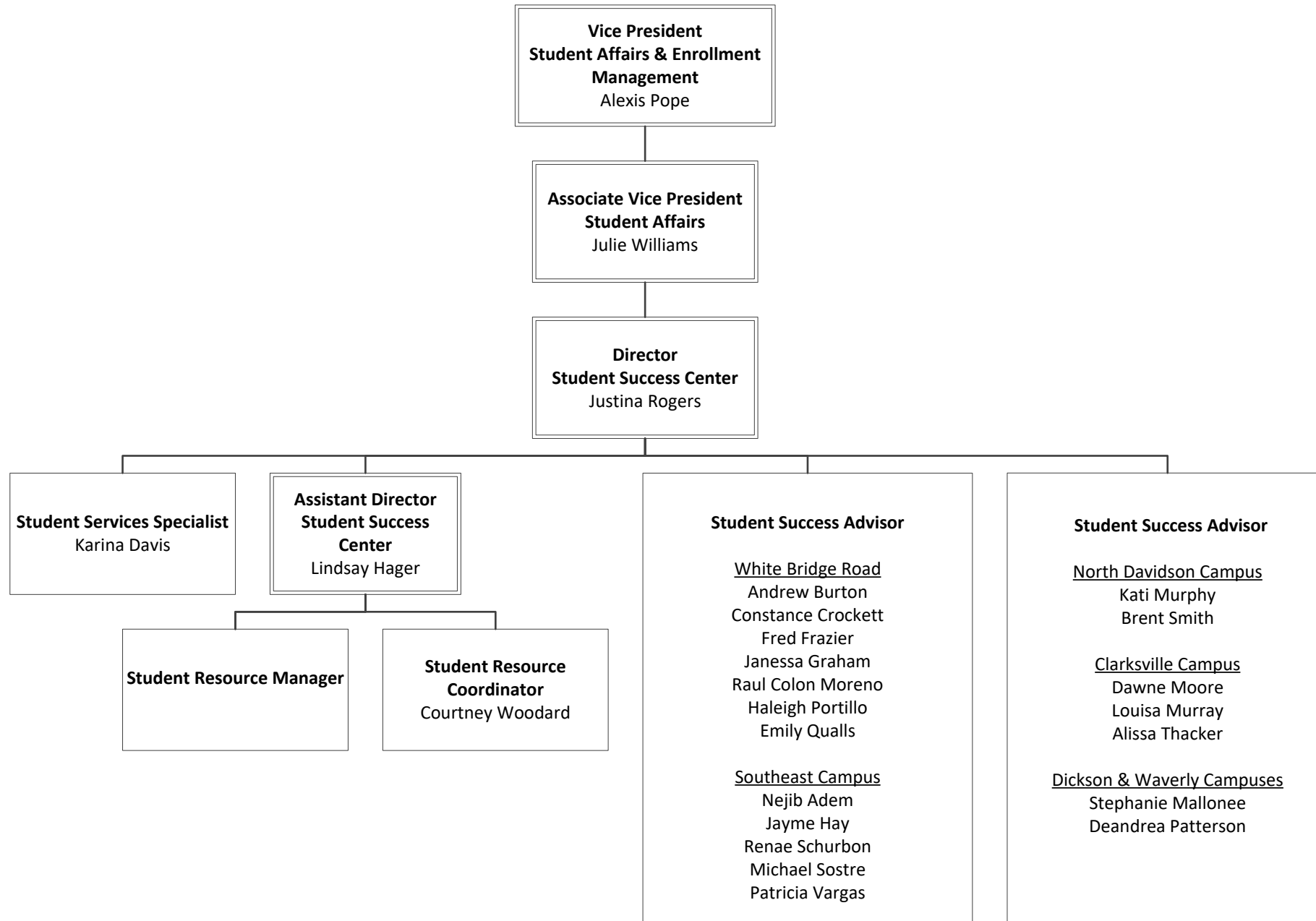
Office of the Testing Center



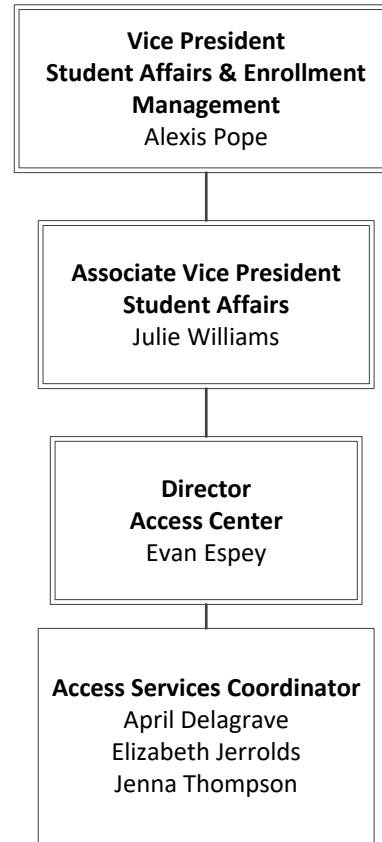
Office of the Associate Vice President for Student Affairs



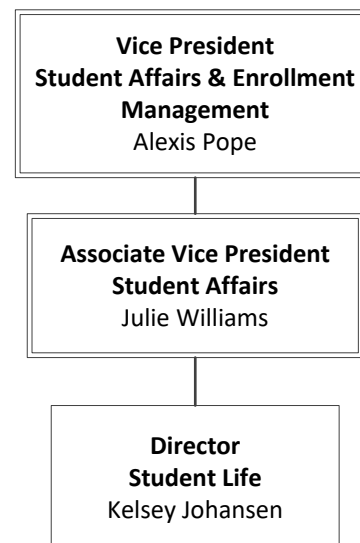
Office of the Student Success Center



Office of the Access Center



Office of Student Life



Vice President of Academic Affairs

Vice President for Academic Affairs and Workforce Development

Office of the Vice President of Academic Affairs

Office of the Center for Workforce Development and Continuing Education

Office of Learning Resources

School of Business and Professional Studies

School of Arts and Humanities

School of Health Sciences

School of Science, Technology, Engineering and Mathematics

Office of the Associate Vice President Academic Affairs

Office of Online Learning

Office of the Associate Vice President Extended Campuses

Office of High School Initiatives & Dual Enrollment

Clarksville Campus

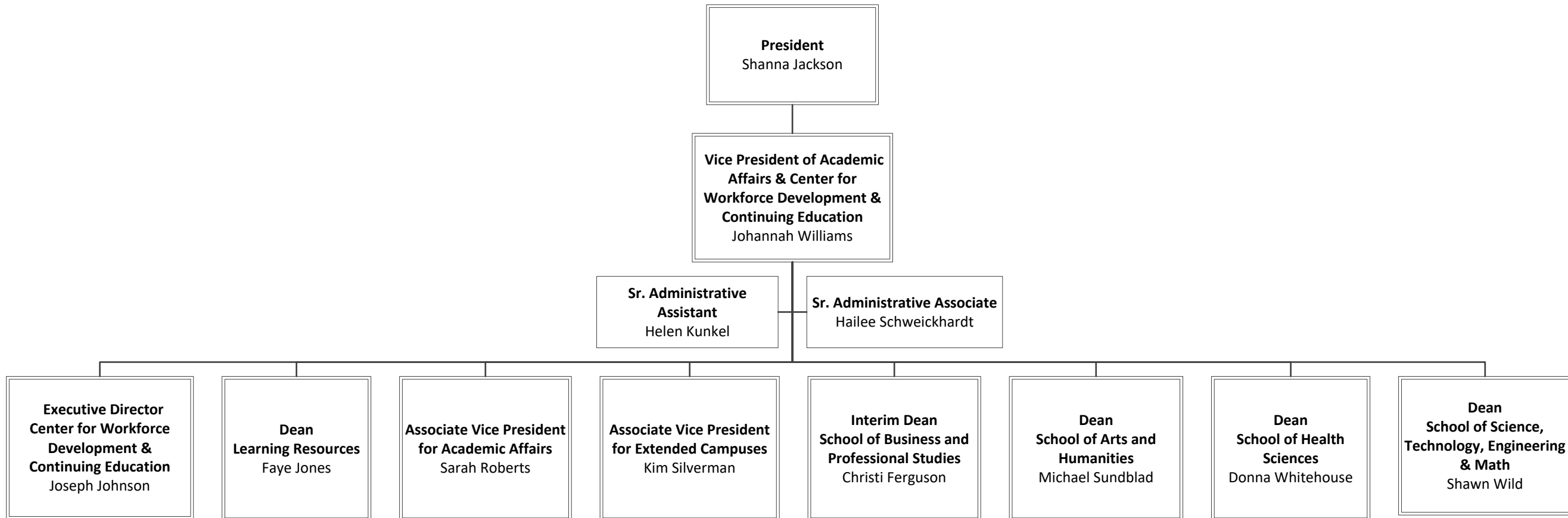
Dickson Campus

Humphreys County Campus

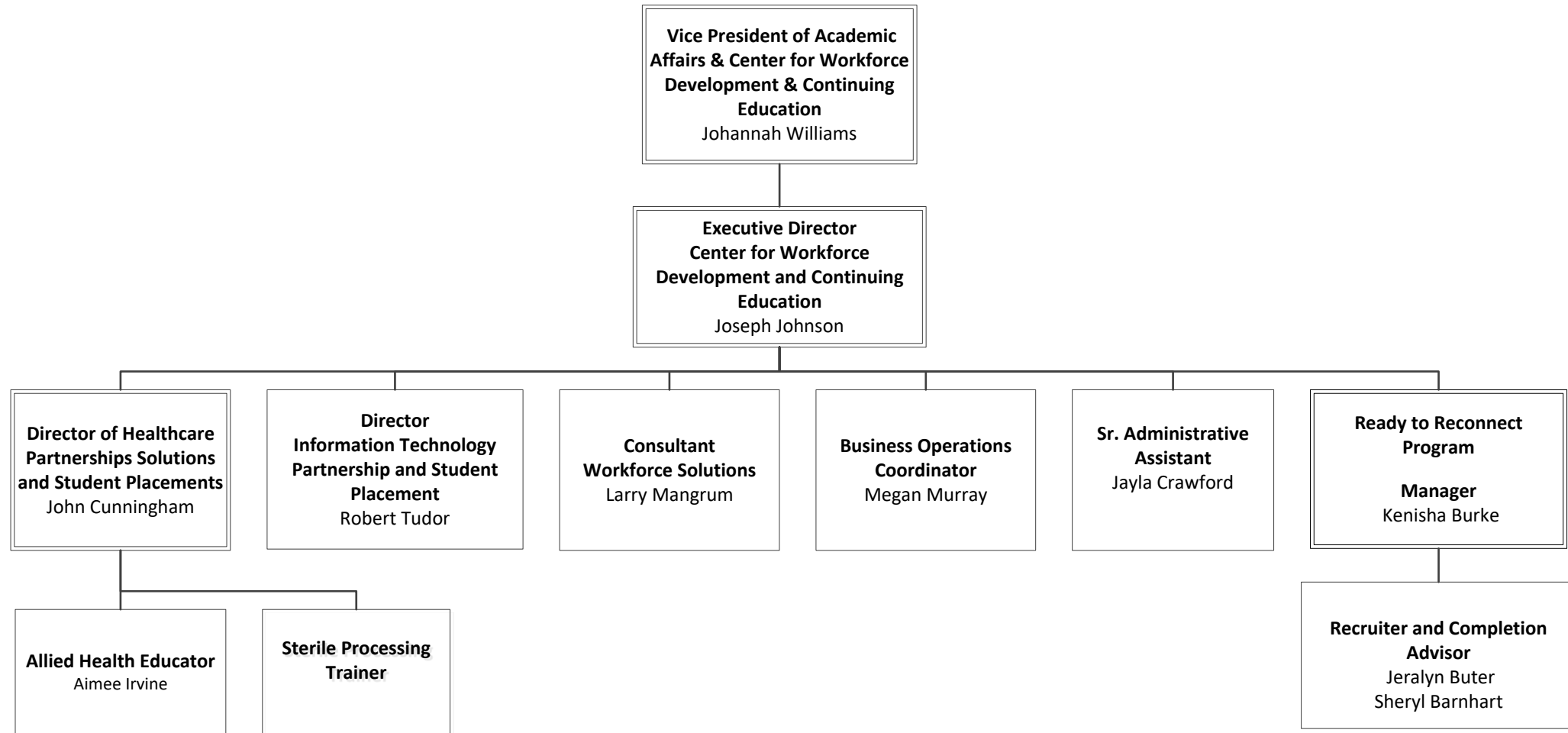
North Davidson Campus

Southeast Campus

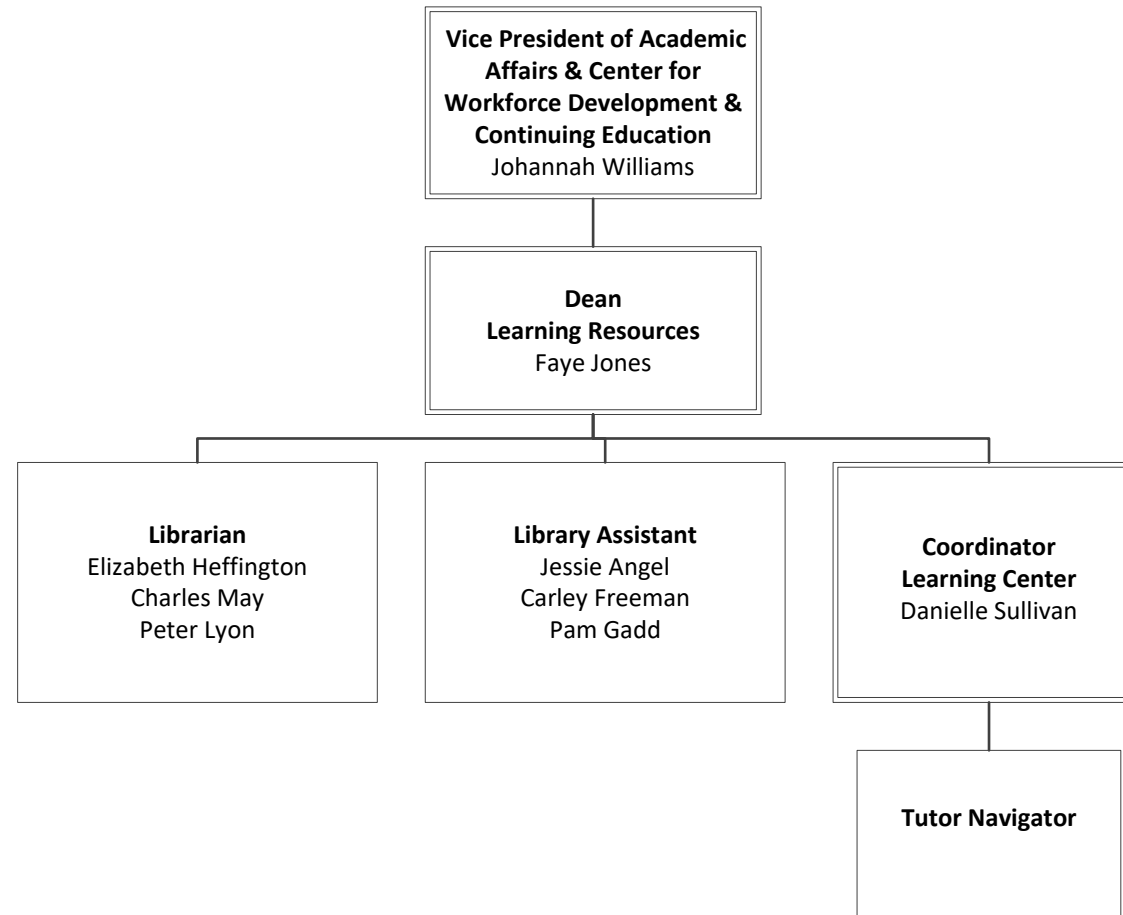
Office of the Vice President for Academic Affairs



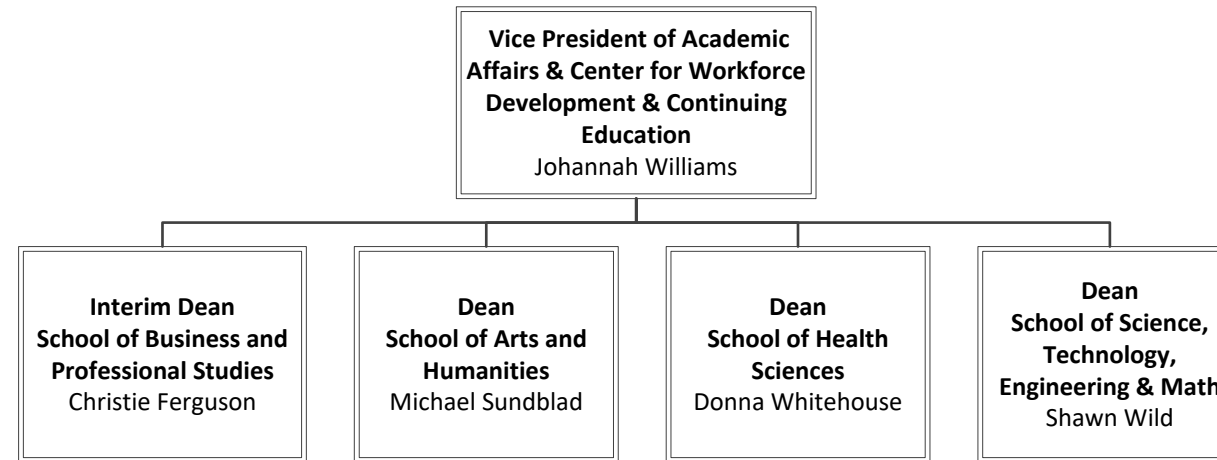
Office of the Center for Workforce Development & Continuing Education



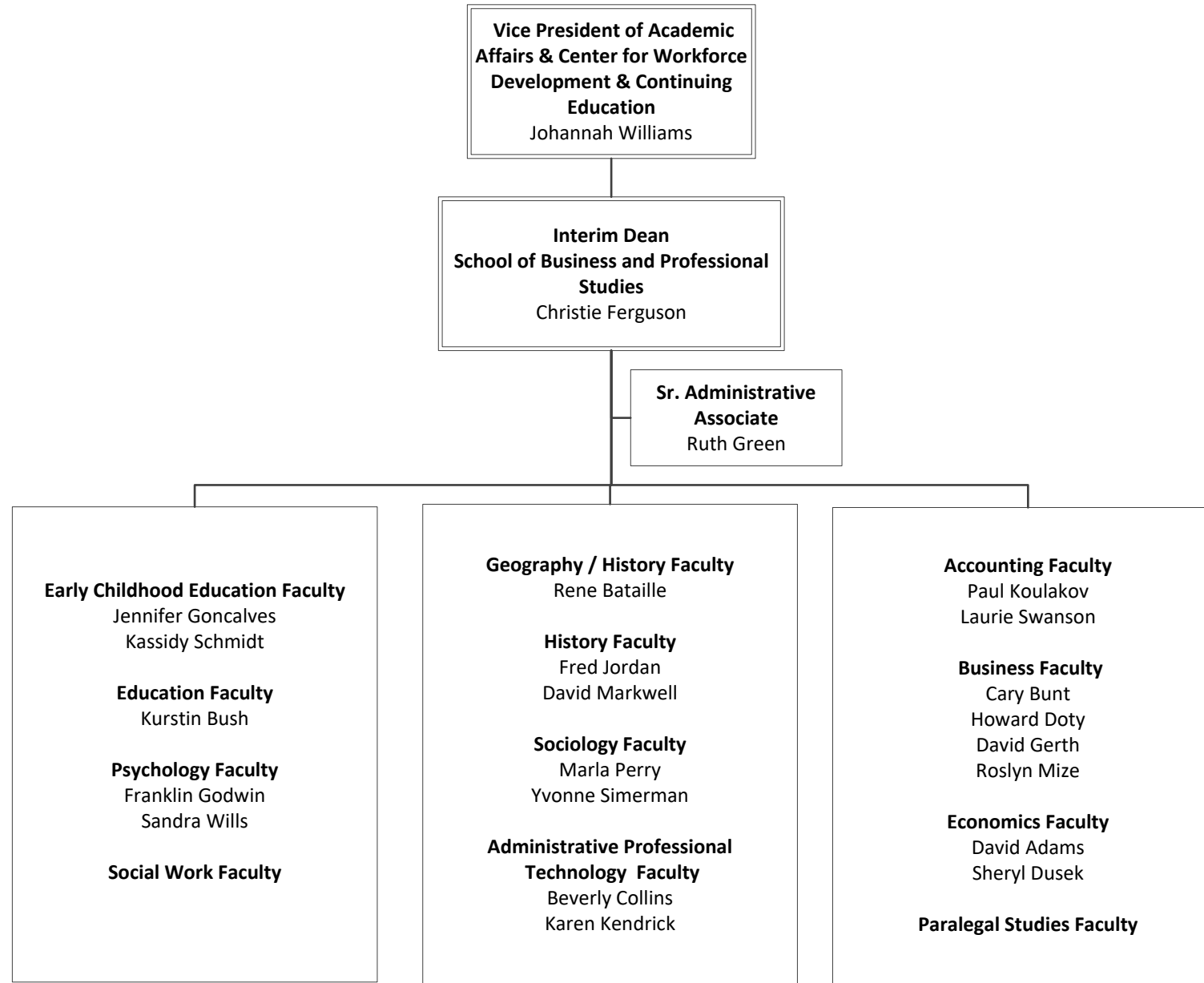
Office of Learning Resources



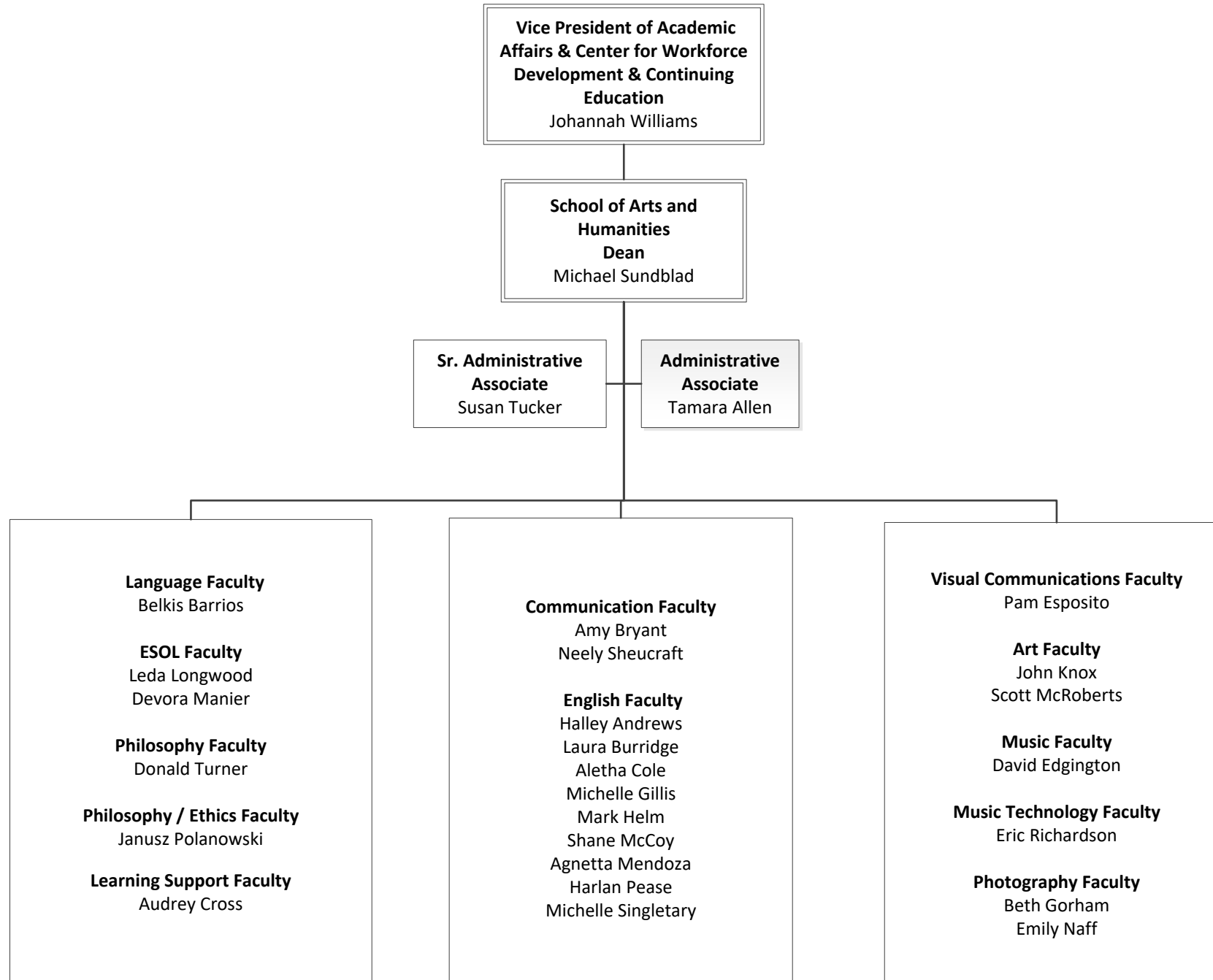
Academic Divisions



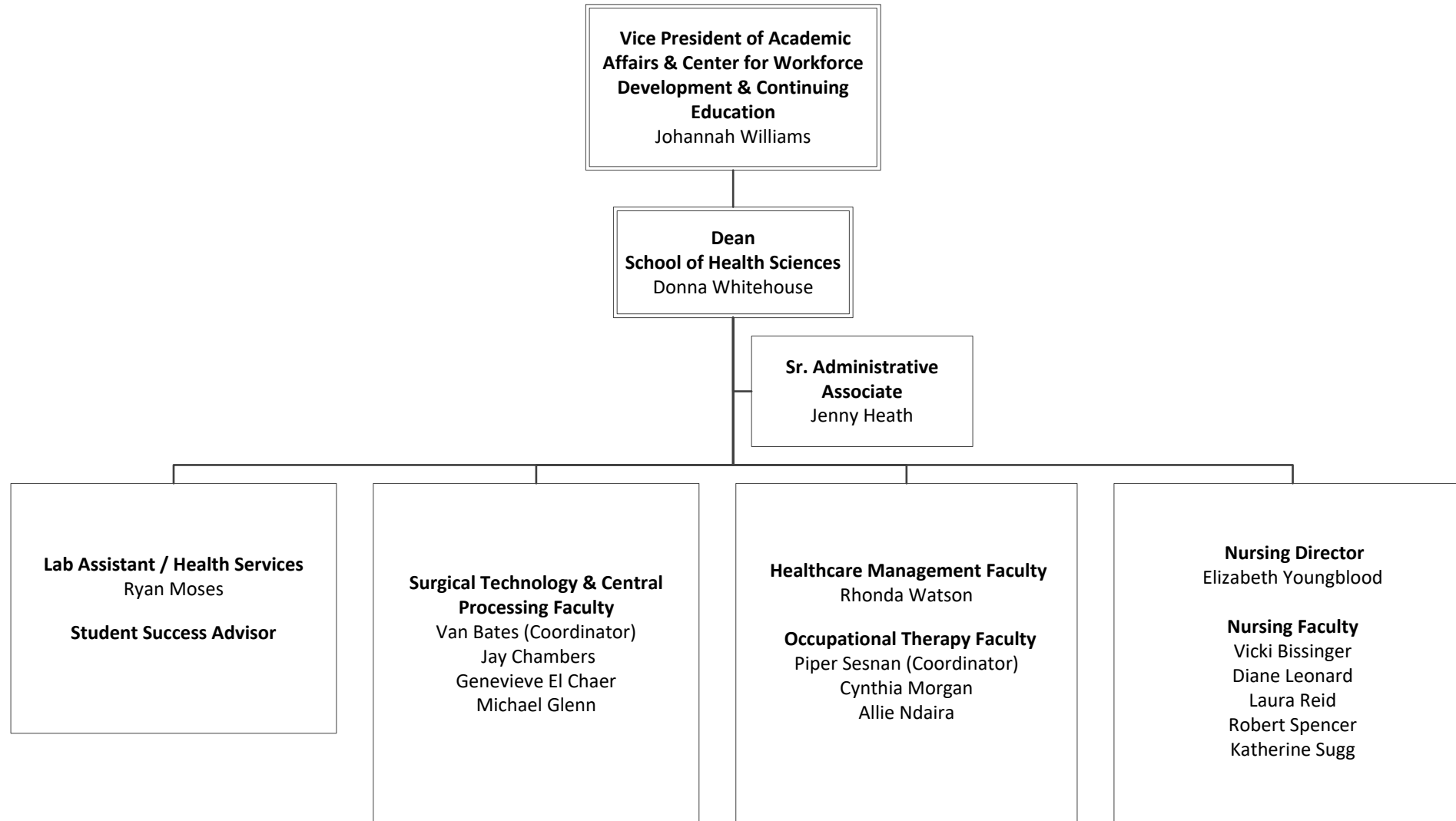
School of Business and Professional Studies



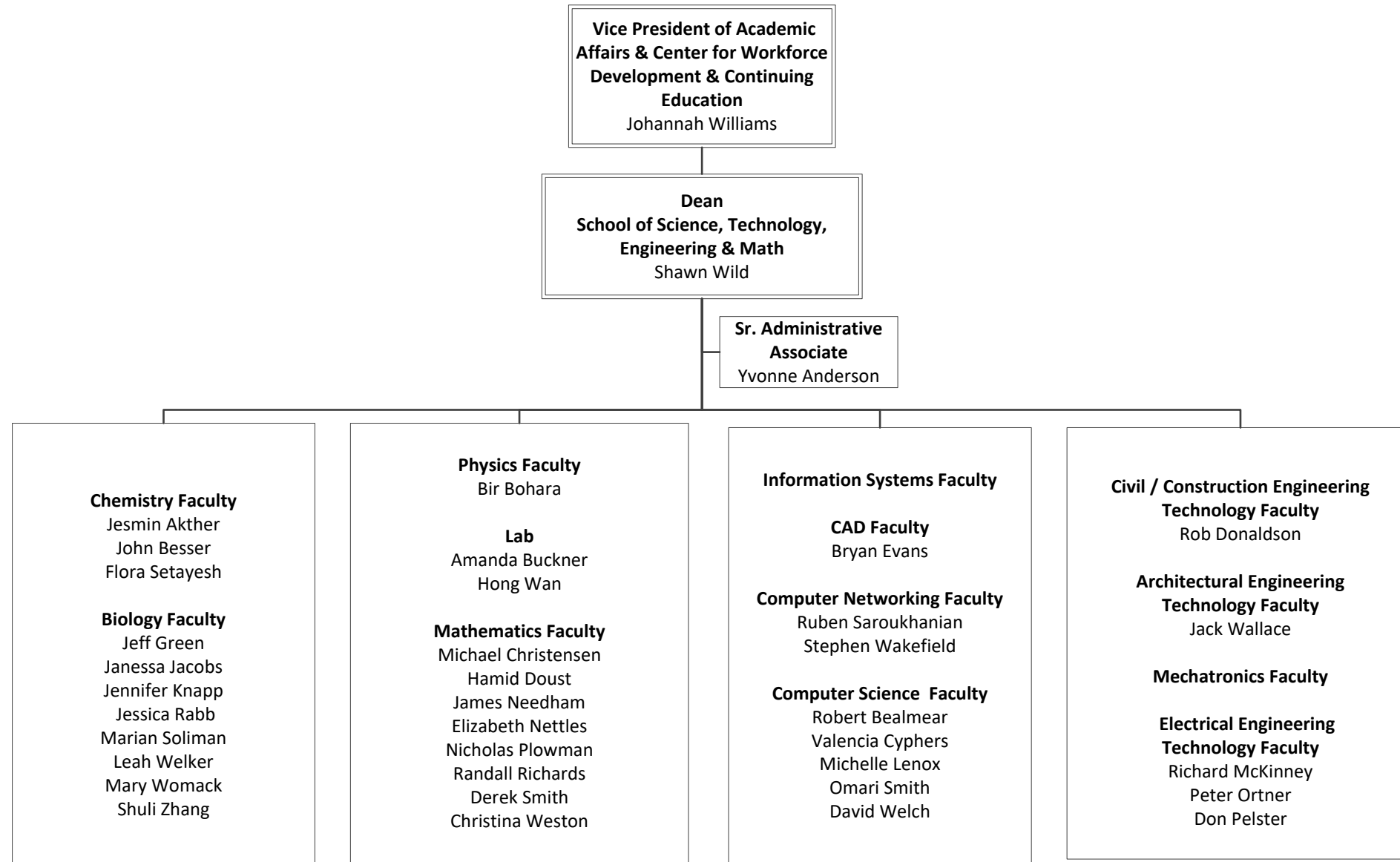
School of Arts and Humanities



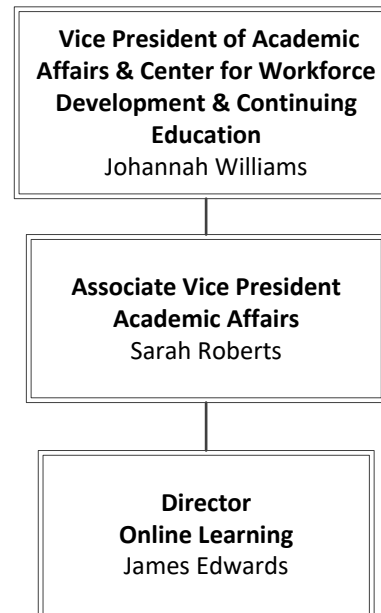
School of Health Sciences



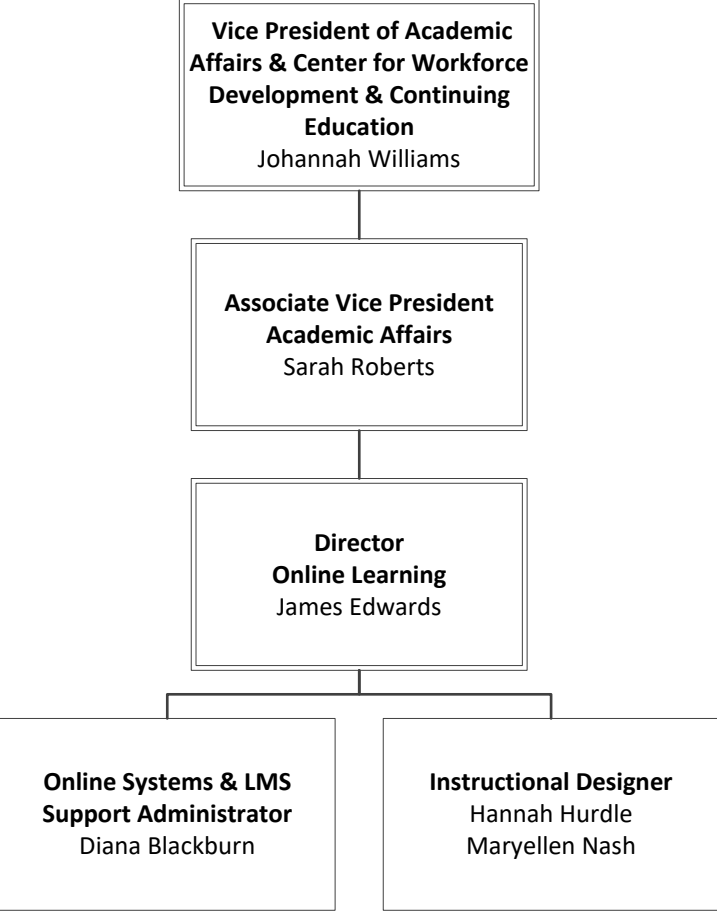
School of Science, Technology, Engineering & Math



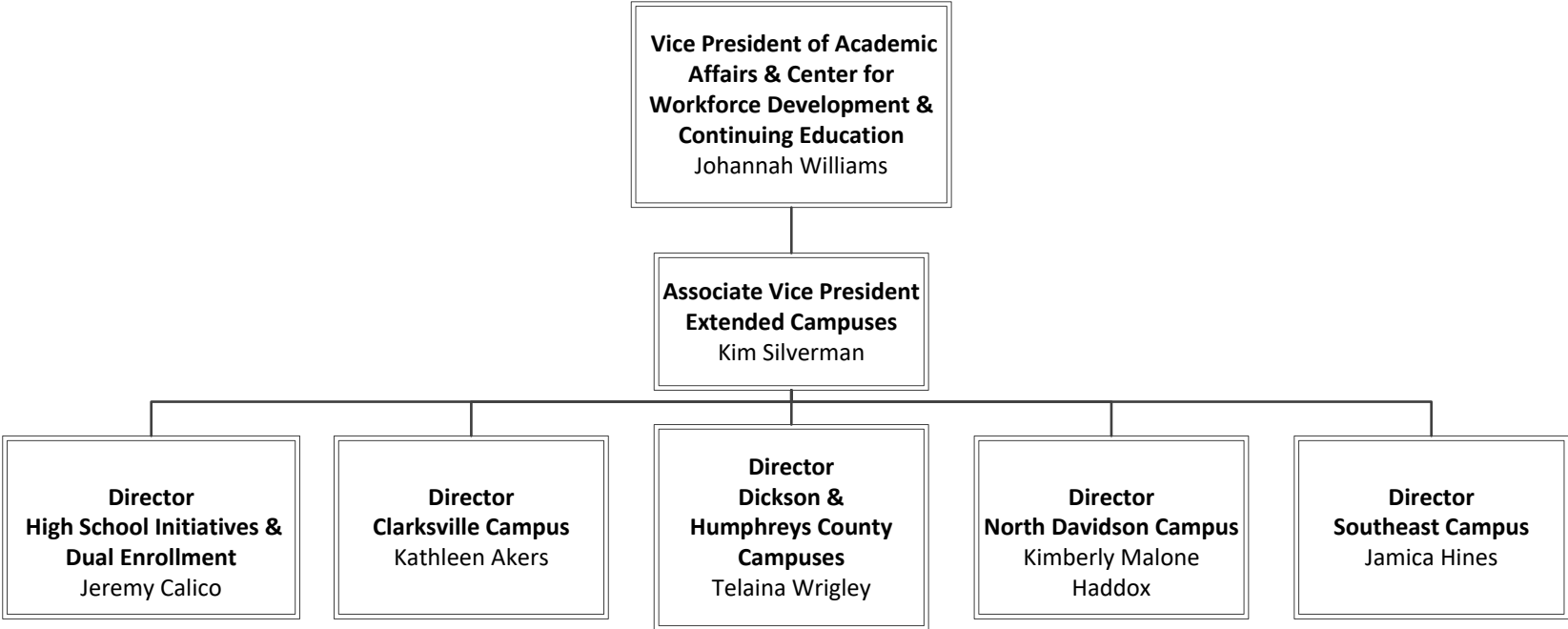
Office of the Associate Vice President for Academic Affairs



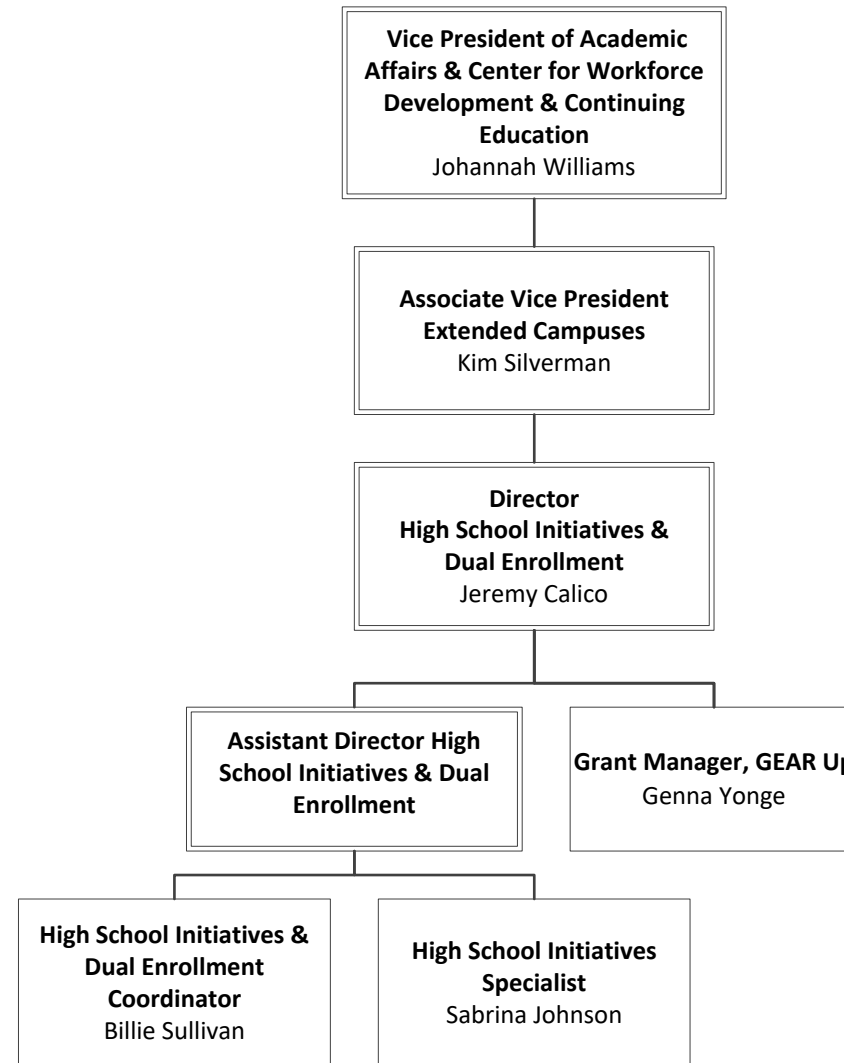
Office of Online Learning



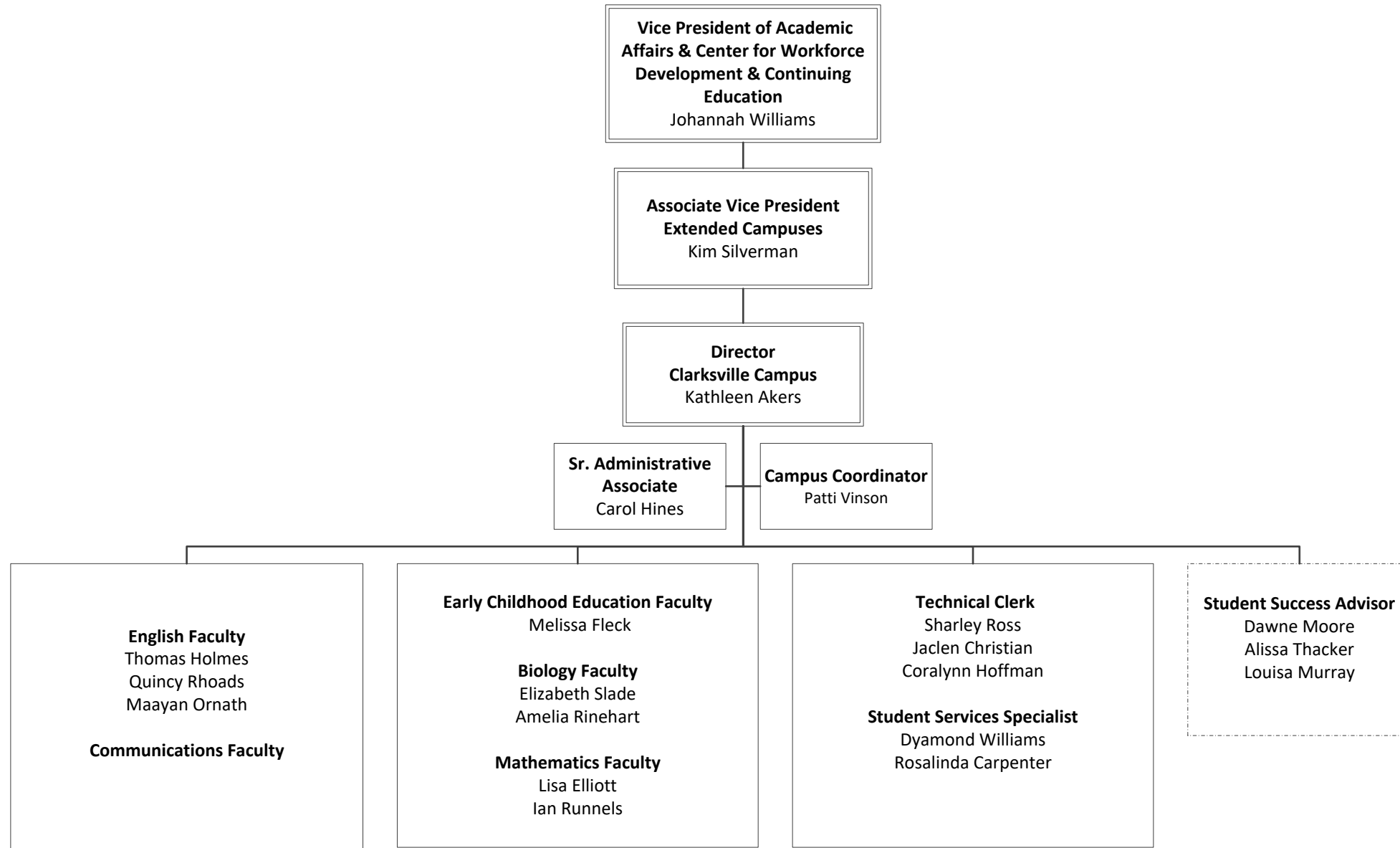
Office of the Associate Vice President for Extended Campuses



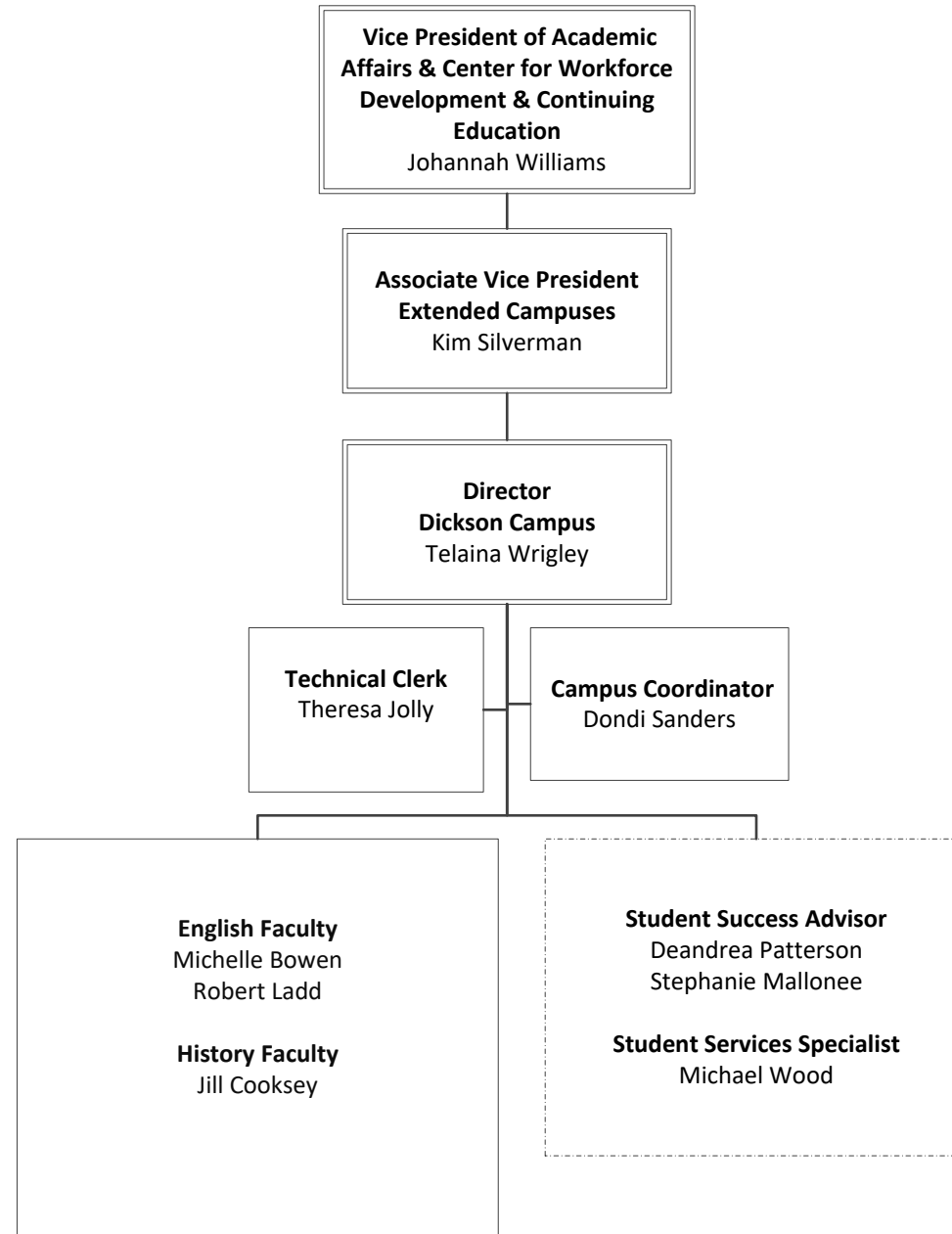
Office of High School Initiatives and Dual Enrollment



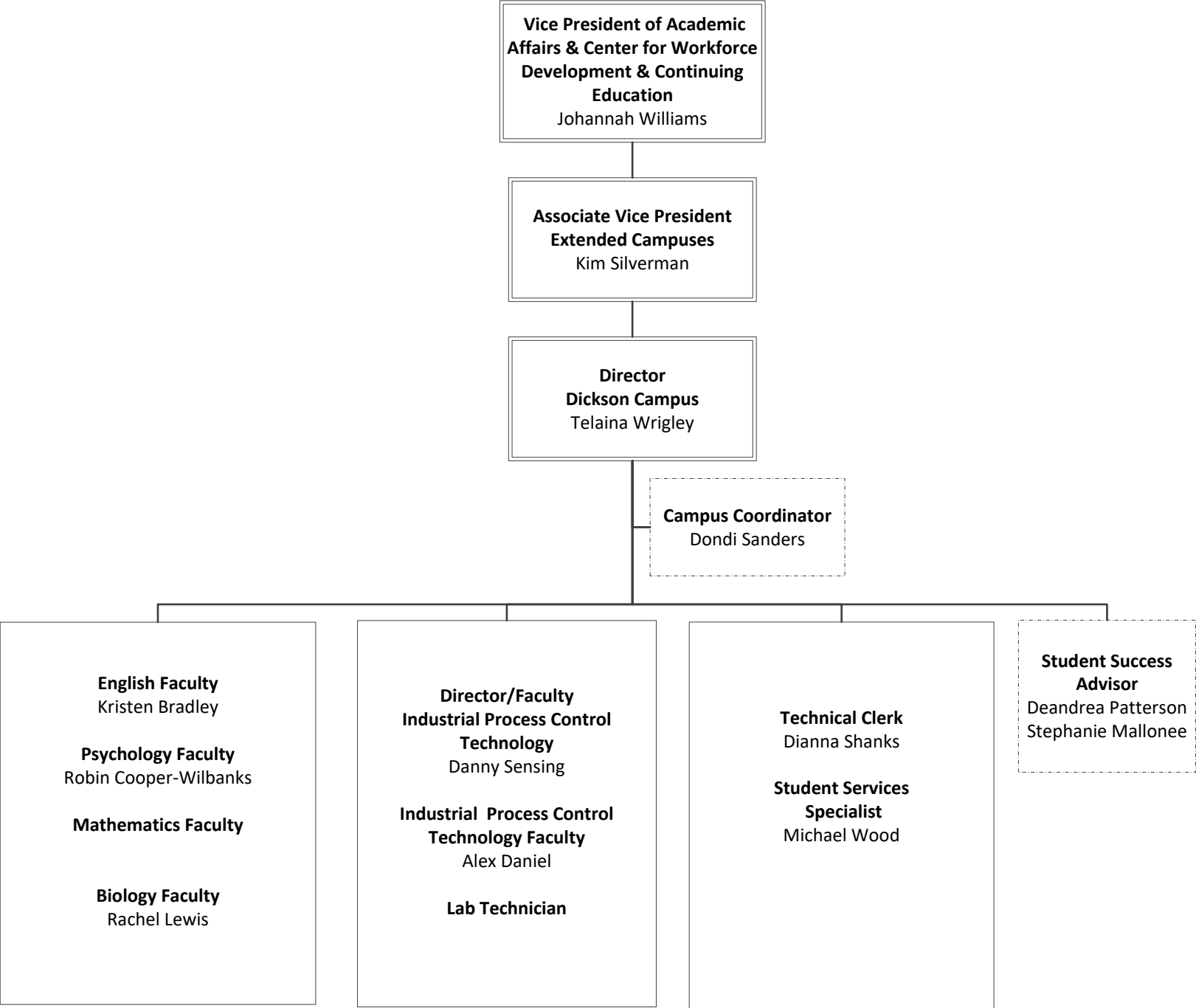
Clarksville Campus



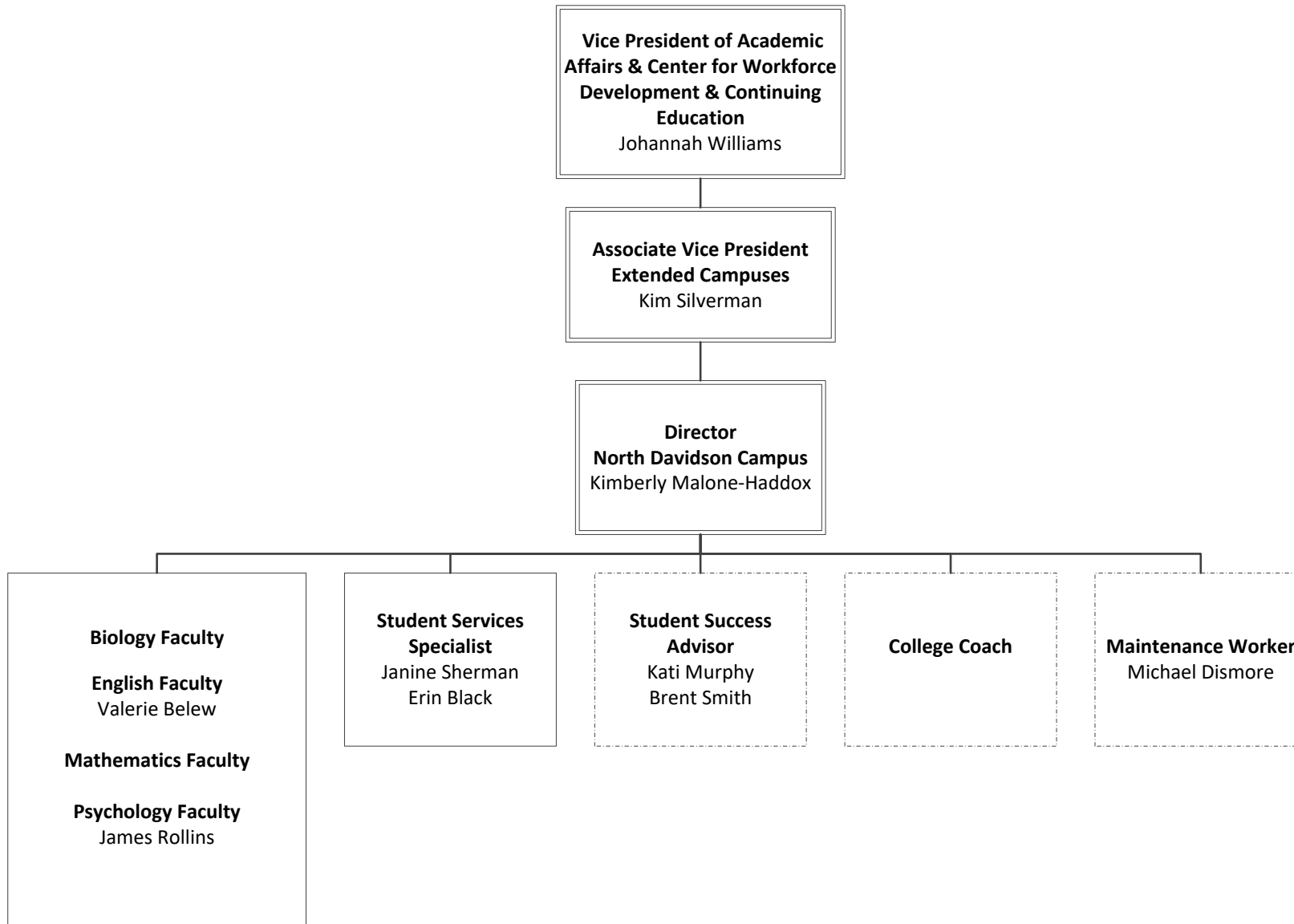
Dickson Campus



Humphreys County Campus



North Davidson Campus



Southeast Campus

